

## HOLIDAY LIGHTS

### Thanksgiving thru New Year's Eve

A community tradition began in 1987 when the Friends of Shore Acres decided to string a few lights to help celebrate the holidays. That first season, 6,000 miniature lights, one large Christmas tree, and the decorated and open Garden House drew 9,000 visitors.



Now, at least 300,000 LED lights, 20 large landscape lights, dozens of small landscape lights, 26 large holiday trees, dozens of lighted sculptures, entertainment in the Pavilion, and the festive open house attract 40,000 to 50,000+ visitors each season. Numbers vary with the weather and visitors come from almost every state and many different countries.



They enjoy hot cider, coffee, punch, and cookies.

*"Our Favorite Tradition!" - Federal Way, WA*

*"GREAT! A Must See." - Martinsburg, PA*

*"Epic Awesomeness!!!" - North Bend, OR*

*"THE BEST!!! EVER - Portland, OR*

Planning for the season begins in January with inventory and checking used lights. The lighting plan is completed and replacement lights ordered by the end of May. Sculptures are created and refurbished during the summer. In late summer, the new lights are prepared for the setup that begins the middle of October. The Garden House is beautifully decorated in a traditional holiday theme.

Sculpture displays are set up, and hundreds of lights stringers and tree decorators work for about 6 weeks to complete the display by Thanksgiving. The total number of volunteers for the event is about 1,500, which also includes button makers, spice makers, lights checkers, house cleaners, host teams, entertainers and IGC volunteers.

Friends of Shore Acres, Inc. with support of local businesses and individuals pay for the lights, the decorations, and all display expenses. Shore Acres State Park and the Friends pay the light bill.

Also contributing to the success of the Friends and the Holiday Lights are park staff, our members, our Information and Gift Center and *visitors like you.* ■

### Volunteers Welcome

Co-Chair - Shirley & David Bridgham  
541-756-5401 or [bridgham@epuerto.com](mailto:bridgham@epuerto.com)



Friends of Shore Acres, Inc. and

Shore Acres State Park



*"a powerful partnership since 1986"*

## INFORMATION & GIFT CENTER All-Volunteer



- Choose from thousands of excellent items.
- Annual OPRD park passes available for purchase at the Information & Gift Center (IGC).
- Net proceeds from the IGC, the Holiday Lights, and other Friends' activities go toward projects that benefit the park.

541-888-2472 • 1-866-888-6100  
[www.shoreacres.net](http://www.shoreacres.net)

## Become a Member today!

Name: \_\_\_\_\_

Address: \_\_\_\_\_

City: \_\_\_\_\_

State/Zip: \_\_\_\_\_

Phone: \_\_\_\_\_

Email: \_\_\_\_\_

### Circle One

- \$500 Life                      \$25 Patron  
\$250 Sustaining            \$15 Family  
\$100 Benefactor          \$10 Individual  
\$50 Sponsor



I / We would like to volunteer for:

- Information & Gift Center  
 Friends Monthly Activities  
 Holiday Lights at Shore Acres State Park

Please fill out this form and mail with your check or money order to: Friends of Shore Acres, Inc., PO Box 1172, Coos Bay, OR 97420

Friends of Shore Acres Inc. is a 501 (c) (3) tax-exempt organization. Tax I.D. #93-0941893

*\$5.00 Member Discount on OPRD Permits*

12 Month Permit (Member Price) \$25.00

24 Month Permit (Member Price) \$40.00

Membership: \_\_\_\_\_

Permit: \_\_\_\_\_

Total: \_\_\_\_\_

I / We wish to pay by credit card: VISA    MC

Credit Card Number \_\_\_\_\_

Expiration Date \_\_\_\_\_ 3-Digit Security Code \_\_\_\_\_

Signature (Credit Card Payment Only) \_\_\_\_\_

More information: 541-756-5401 • 541- 888-5447

© Friends of Shore Acres, Inc. - November 2014

### — MEMBERSHIP BENEFITS —

- Discount in the Information & Gift Center
- Discount on OPRD Permits
- Annual Summer Journal
- Volunteer Opportunities

### Shore Acres' Annual Events

- Rhododendron Sunday-Mother's Day - May  
State Parks Day - June  
Rose Sunday-Father's Day - June  
OCMF Garden Concert - July  
Bonsai Day - August  
Orchid Day and Dahlia Day - September  
Holiday Lights - Thanksgiving-New year's Eve



## Friends' and Parks' Cooperative Milestones

1986, Dec. - Friends of Shore Acres Founded  
1987, Dec. - First Holiday Lights

- 1988 - Garden cart and garden "sitters" for sales
  - Underground wiring in formal garden
  - First parking lot lights
- 1989 - Gift and Information Center (GAIC) (8'x8')
- 1990 - Plant I.D. signs
- 1991 - Underground wiring in pond area
- 1992 - Information and Gift Center (IGC) (24'x24')  
(GAIC name change)
- 1993 - Friends' storage building (24'x24')
  - Shore Acres Viewbook
  - Garden House - new wiring, lights, paint
- 1995 - "Gardens Above the Waves" video
  - Doubled existing parking, added parking lot lights
- 1996 - Memorial Fountain built
  - Landscape Lighting project started
- 1998 - Garden House - new carpet
- 1999 - New rose pergola
  - Garden House - kitchen remodel
- 2000 - 50 space overflow parking lot
  - Garden House - new foundation & ceilings
- 2001 - Performance Pavilion
  - Friends' web site created
- 2002 - Storage building doubled in size
- 2003 - Simpson Reef Overlook - new parking lot, viewing platform and interpretive displays
  - New Information and Gift Center (32'x48')
  - New Gazebo and Columns Entrance to the Gardens
- 2005 - Memorial Fountain Display redesigned and built
  - Pond - resurfaced base
  - Observation Building - wiring and path lights
  - "Gardens Above the Waves" video on DVD
- 2006 - "The Shore Acres Story" video on DVD
  - Garden House - new interior doors
  - New brochure rack at entrance
  - Second Gifts and Memorials Display created
  - New paver path near Observation Building
- 2007 - Water system booster pump
- 2008 - New gate on the northwest side of the garden
  - Garden House - restoration of front windows
- 2009 - A second storage building for Friends and Park
  - Garden House - installed original style small windows
  - Garden House - painted inside and out
  - Web camera, west side - installation
- 2010 - Web camera, west side - pictures on web site
  - Paver paths near Garden House and Pavilion
  - Memorial Fountain renovated
  - New garden gate southwest of garden
  - New fencing around garden
- 2011 - Garden House - restored dining room windows
  - New garden benches
- 2012 - Newly designed web site at [www.shoreacres.net](http://www.shoreacres.net)
  - New Interpretive Panels in Observation Building and at the Garden Entrance
  - New Storage Building for IGC
  - Garden Entrance - new Trex deck
  - Garden House - new back Trex deck
- 2013 - Garden House - new front Trex porch and steps
  - New cedar rose pergola, west side
  - New paver path from Garden House to parking lot
  - Garden House - new front bedroom windows
- 2014 - IGC - New water heater and HVAC system
  - Garden House - weather envelope project
  - New exposed aggregate concrete walk east of pond
  - New redwood garden benches near fountain and IGC

## Shore Acres Gardens 1975



This brochure contains some of the important dates and events in the history of Louis J. Simpson's grand *Shoreacres Estate* and Shore Acres State Park and the ongoing partnerships of the Friends of Shore Acres, the Oregon Parks and Recreation Department and others to continue and enhance Simpson's legacy. More books and videos on the history and natural history are available in the Friends' Information and Gift Center.

The Friends' ongoing interpretive projects include the annual Journal, web site management, the Rocky Shores Interpretive Program, brochures, DVDs, new plants and plant signs and other projects needed by the park. ■

## Shore Acres History

At its zenith, L. J. Simpson's *Shoreacres Estate* stretched from Sunset Bay to Cape Arago.

1905 - Louis bought the property from Jake Evans for \$4,000.

1907 - Louis began building his first mansion on the bluff (site of the present Observation Building) as a Christmas present for his wife Cassie. He began landscaping and formal gardens that would include exotic plants from all over the world and planted Monterey Cypress at the entrance to the gardens. He built a carriage house/barn complex at the north end of the property and a gardener's cottage (the only structure still standing) near the formal gardens. At the south end, L. J. built a dairy farm complex where he raised prize Holsteins.

1914 - Enlarged the mansion to include a Roman Bath with a 26'x52' swimming pool that used both fresh and salt water. Built rose pergolas and greenhouse. Reconstruction of the south end of the formal gardens included a Japanese garden and 100' pond. Also built Sunset Bay Inn which was destroyed by a fierce storm in 1939.

1921, April - Cassie Simpson died after a long illness.

1921- July - The mansion burned to the ground.

1927 - Louis and his second wife Lela moved into a second mansion that stretched 224' along the bluff.

1932 - Louis and Lela gave the Cape Arago portion of the estate to the state of Oregon.

1942 - The U.S. Army closed the road at Sunset Bay and the Simpsons moved to a home in nearby Barview.

1942, December - The Simpsons sold the remainder of the estate for \$29,000 to Oregon for the development of a public park.

World War II Years - The U. S. Army occupied the site and the mansion became a barracks and officers' club.

1948, December - Because the second mansion needed too many repairs it was razed.

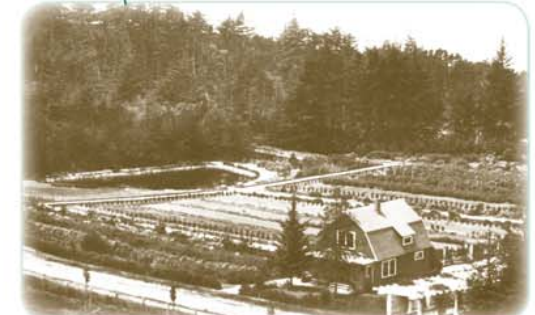
1949, January - Louis J. Simpson died at his home in Barview. He is buried in the Simpson family mausoleum at Mountain View Cemetery, Oakland, California.

1974-75 - Oregon State Parks launched a program to rehabilitate Shore Acres. Landscape architect Joseph Paiva prepared a design similar to but slightly more formal than the original garden. The new design included resloping the gardens to improve drainage. A rededication ceremony was held September 18, 1975.

1977 - All America Rose Selections Display Garden established.



Simpson's first Mansion of the Bluff, circa 1910



Garden House (former Gardener's Cottage) - early 1900s - Note the half-moon shape of the first pond which Simpson would modify to present shape, circa 1914