

FRIENDS OF
SHORE ACRES

©

Volume II, No. 4

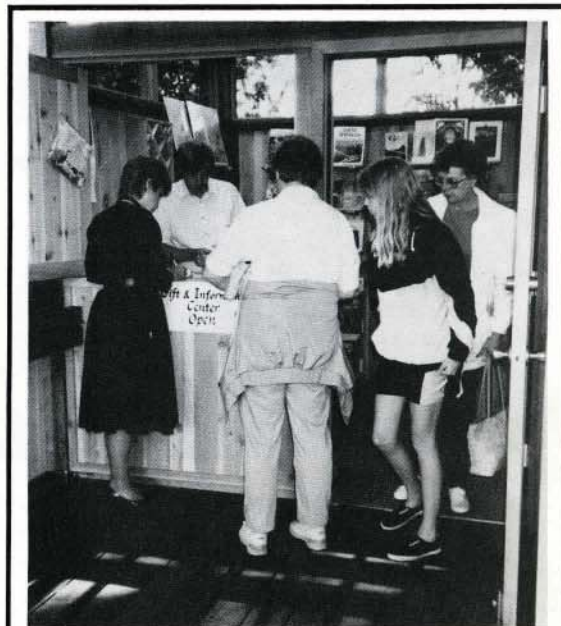
Quarterly Newsletter

August 30, 1989

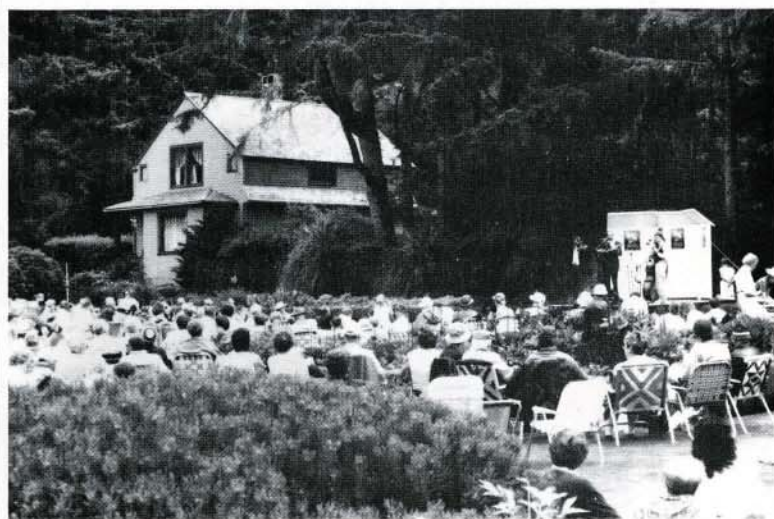
NEW BEGINNINGS AND TRADITIONS CELEBRATED



Two large cakes were served to over 200 visitors as Shore Acres part of a statewide 60th anniversary celebration.



Bill and Lois Harvey help visitors with gift selections and garden information.



Nearly 2,000 people enjoyed beautiful weather and music in the gardens at Oregon Coast Music Festival.

OUTSTANDING COOPERATION
BETWEEN "PARKS" STAFF AND
"FRIENDS" VOLUNTEERS
RESULTS IN PARK ENHANCEMENT
AND EDUCATION FOR THE COMMUNITY

SUNSET BAY PARK DISTRICT

PARK NOTES

by Andy LaTonne



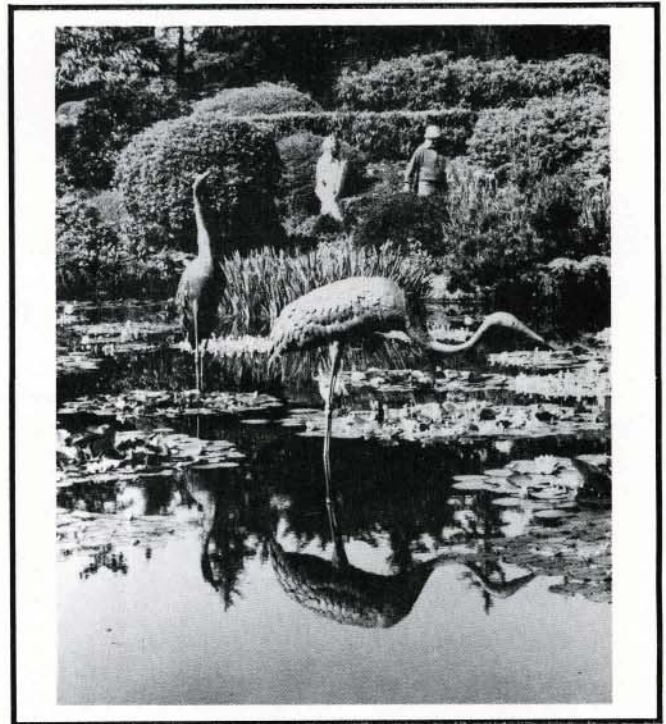
As the Sunset Bay State Park District staff, visitors and Friends gathered in the Garden House at Shore Acres State Park on August 2nd to help State Parks celebrate our 60th anniversary, I found myself reflecting on the past. Perhaps, it was brought on by Harry Luckett's slides of Shore Acres, taken when he was the park manager there nearly a half century ago.

I considered our anniversary slogan, "After 60 years of service, a new beginning," and I thought of Samuel Boardman, the first State Park Superintendent, and how he worked to create not only a system of park properties, but a system of recreational values as well:

The teachings of this God-given land of ours should always be retained within us. ... the lowly bordering cutover area must be salvaged that tomorrow's scenic wayside may not again be desecrated. Build while your sinews are young. Build before time makes your recreational heritage prohibitive through cost. Husband that which you have; build unto that which you would preserve. ¹

I thought of Dave Talbot, our present division administrator and the challenges he has faced to preserve the legacy left by Boardman and the others. I thought of the campground reservation system; of the non-resident surcharge and its repeal; of Parks removal from the Highway Fund and lean budget years during the recession; of the 1967 beach bill; of citation authority given to Park Rangers; of the long-range 2010 Plan and the changes it will bring; of Senate Bill 865 and the establishments of cooperating associations.

I remembered the half-dozen plus park districts in which I've worked, and how special each one was to me. I thought about the excitement I always feel at the start of a new camping season and the feeling of relief that comes along with Labor Day. I thought about the scores of restrooms I've cleaned and the acres of lawns I've mowed and the satisfaction that comes from a job well done. I thought about the park folks with whom I've worked, many of whom are now



retired or passed away. I thought about how funny it is that each year the Park Aides seem to be getting younger, but when I started, the Park Managers all looked so old.

Then I thought of our "new beginning" as Governor Goldschmidt signed a bill into law which removed Parks from ODOT and created the Oregon State Parks and Recreation Department, with its own commission. I thought how it's kind of scary looking into the future, and although many people have asked, I'm not really sure what that future will hold for State Parks. However, I reconfirmed my belief that in the year 2010 and beyond, we'll still be doing that which we do best:

To provide, protect and enhance sites and areas of outstanding natural, scenic, cultural, historic or recreational value for the enjoyment and educations of present and future generations of Oregonians and their visitors. ²

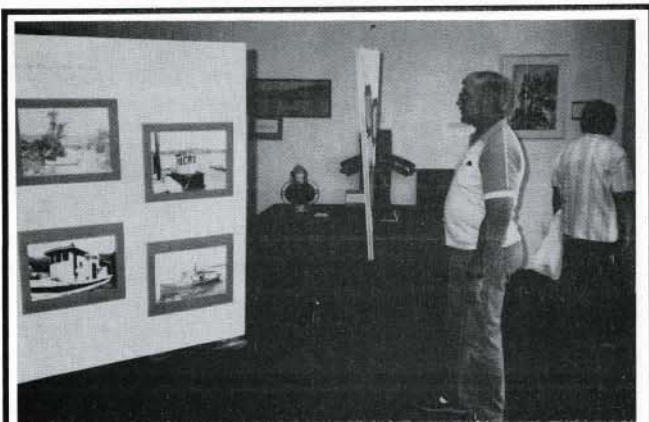
Finally, I thought about all the times acquaintances and park visitors have said, "Boy, you've got the best job in the world."

And I thought, "How right they are."

¹ Boardman, Samuel, Oregon State Park System a Brief History, Oregon State Parks and Recreation Division, Salem OR

² Oregon State Parks 2010 Plan, Oregon State Parks and Recreation Division, Salem OR

EVENTS PAST AND FUTURE



A local maritime exhibit was enjoyed by visitors to the Garden House on Fathers Day

ROSE SUNDAY

The All America Rose Display Garden and the Garden House were both centers of activity on Father's Day/Rose Sunday.

Ray Duskin and Jay Dow, regional rose experts, were on hand in the Display Garden to answer questions. The Garden House was open to visitors with a maritime exhibit provided by the Marshfield Sun Museum and the Coos County Historical Society Museum.

John Bergen responded to questions regarding the formal gardens while members of the Epsilon Sigma Alpha sorority took family photos in a garden setting.



Ray Duskin answers questions from Doris and Bob Emmett during Rose Sunday.

CHRISTMAS LIGHTS AND OPEN HOUSE - DEC. 9 - 31



25,000 LIGHTS TO SPARKLE IN DECEMBER

By the time the next newsletter comes out we'll be ready to string the lights, decorate the house, make hundreds of dozens of cookies and get ready for thousands of visitors. Our 3rd Christmas at Shore Acres opens on Saturday, December 9 and continues through December 31. Hours are 5 pm - 9 pm weekday evenings; 11 am - 9 pm weekends. Hot cider, coffee and cranberry punch will be served along with the cookies. Music and entertainment will add to the festivities.

This community event is free although donations to help cover expenses are more than welcome. If you are interested in helping in any way, please call Nellie Ripper at 759-3241 or Shirley Bridgham at 756-5401.

VISIT THE GARDENS

GARDEN NOTES

by George Guthrie



One of the nice things about sight-seeing around the Shore Acres area is the opportunity to watch deer grazing peacefully in the nearby woods and meadows. One of the worst things about being a gardener is having to watch said critters munching down on any number of assorted exotic and expensive plants inside the formal gardens. Lets face it, deer are lovely and graceful creatures but they can be extremely destructive in a garden setting.

Luckily, the formal gardens are protected by a high fence but what can be done to landscape those areas that are unfenced-what plants (other than gorse or plastic flowers) can we plant that will survive and look good without special protection?

Unfortunately, there are no absolutely "deer-proof" plants, but we can suggest several that do well without becoming prime entrees on a deer's garden buffet.

First on the list is cistus or "rock-rose", a medium size evergreen shrub that is pleasant for us to smell, but apparently terrible for deer to taste. Cistus has pretty flowers like single roses - ours are white with dark spots on the petals. We have planted rockrose across the parking lot from the garden entrance and unlike "true" roses in a similar situation they've never been nibbled by our four-legged friends.

In the same planting, we have several specimens of New Zealand flax. It looks rather like a giant iris clump or a big yucca and adds a dramatic sub tropical accent to the landscape. In their home country, flax leaves are made into an extremely tough fabric for clothing and cordage (rope). Here, the leaves are at least strong enough to make Bambi's teeth ache because they leave them strictly alone.

Near the garden house are two other plants which have successfully resisted deer grazing. One of them, Mexican orange (*Choysia*) is an authentic member of the citrus family. Just like lemons and limes, it has glossy evergreen foliage that literally puts the pucker on potential diners. Left alone by both deer and gardeners, Mexican orange can grow to 5 or 6 feet high and equally broad with clusters of scented white flowers that appear sporadically throughout the year.

Just as resistant to deer - but even more showy is pieris, otherwise known as andromeda or "lily of the valley" shrub. Related to rhodies and azaleas, pieris can't compete with its cousins for floral



Visit the Greenhouse for a tropical "deer-proof" treat.

flamboyance but its foliage puts on a display as good as any flowers. For a period of about six weeks the new leaves go through a series of color changes starting with brilliant red, changing to white and ending in a bright clean green. Best of all, each leaf does the color change at different times - so that the display becomes a mix of all three colors (and shades in between). Deer are color-blind, so the pretty leaves color show is lost on them and so apparently is any goodies of taste sensation, since they are rarely if ever even tasted.

Finally, Darwin's barberry is a large shrub with a definite place in a deer resistant garden. Related to our native Oregon grape (another deer turn-off), this South American shrub must possess a south of the border tanginess that gives our "gringo" deer heartburn!! Or maybe it's the extremely spiny leaves that make them shy away. As far as people are concerned, the barberry has large clusters of golden-yellow flowers that start in winter and early spring and are followed by clusters of bluish grape-like berries just like Oregon grape. It's an adaptable and accommodating plant that can be trimmed into topiary, bonsai or a hedge barrier against unwanted two (or four) legged visitors.

Obviously, we've just indicated a few deer resistant plant possibilities. Actually, there are a surprising number that can make it on their own without our protection. The point is that we can make attractive landscapes that our beautiful local deer can wander through unhindered by our fences and un-nibbled by their teeth.

George

FRIENDS ACTIVITIES

FRIENDS VOLUNTEERS HELP AT OREGON COAST MUSIC FESTIVAL

Cars were parked (and un-parked) and for the 2nd year the Friends of Shore Acres volunteers were actively involved with the Oregon Coast Music Festival opening concert.

While the "Swing Beans" entertained a garden full of visitors, many of those same visitors enjoyed ice cream sundaes! Vanilla ice cream and fresh raspberries or chocolate were winning combinations on a sunny afternoon.

Cranson Fosburg, Al Aslakson, Chris Flammang, David Bridgham, Frank Smith, George Guthrie and Bill Moragne parked cars. Donna Flammang, Jerrie Van Natta and Ann Koppy served sundaes and Pepsi while Robin Harms ran the Gift and Information Center (one of its biggest days). A big thanks to all!



Raspberry topped sundaes proved to be a favorite at concert.

APPRECIATION DINNER IS PLANNED

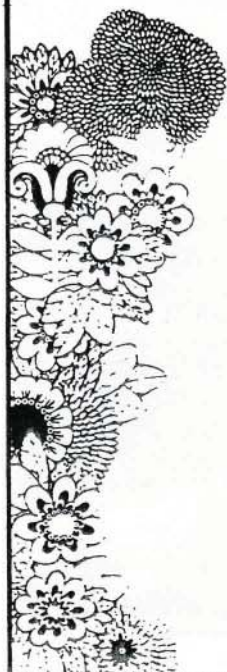
A time to reflect on the past year's activities and how our volunteers have made it all possible. Dinner at the Red Lion Inn, Thursday, September 28th. Pre-dinner social complete with entertainment begins at 6:30. Dinner follows at 7:15, then a short program and presentations. For reservations call 756-5401 by September 22.

*** SPECIAL THANKS ***

Generous contribution from
Mike Lainoff & Conny Frisch

Generous time and effort from
Tom Kyle and George Jones
to solve electrical problems

CALENDAR



Sept. 5, Tues.	Board Meeting	Garden House	7:30 pm
Sept. 12, Tues.	ANNUAL MEETING	Garden House	7:30 pm
Sept. 28, Thurs.	VOLUNTEER APPRECIATION DINNER	Red Lion Inn Umpqua Room	6:30 pm
Sept. 29-30	State Co-Op Conference	Silver Falls State Park	
Oct. 3, Tues.	Board Meeting	SWOCC Empire 102	7:30 pm
Oct. 21, Sat.	Board Planning Session	South Slough Reserve	10:00 am
Nov. 7, Tues.	Board Meeting	SWOCC Empire 102	7:30 pm
Dec. 1, 2, 3 (Fri., Sat., Sun.)	Christmas Installation	Gardens	daily
Dec. 7, Thurs.	Christmas Preview for Christmas Volunteers	Gardens	7:30 pm
Dec. 9, Sat.	CHRISTMAS LIGHTS & OPEN HOUSE	GARDENS & HOUSE	* 11:00 AM

* LARGE CENTER CHRISTMAS TREE TO BE LIGHTED AT DUSK

"Christmas Lights & Open House" continues through December 31.
Open Weekends 11 am - 9 pm *** Open Week nights 5 pm - 9 pm.

NEW ACTIVITIES AND FRIENDS

GIFT AND INFORMATION CENTER OPEN SINCE JUNE 18TH

The official opening of the new Gift and Information Center coincided with our activities on Rose Sunday/Father's Day.

It has proven to be a focal point that attracts many visitors with their questions about the gardens and the surrounding state parks.

Some of the many items sold at the Gift and Information Center are: a Milton Bradley puzzle of the formal gardens; a special sweatshirt with our logo; books that relate to our locale; travel audio cassette tapes for the car; the **Friends** Shore Acres pin; and interpretive notecards. If you are a member and show your card, you will receive a 10% discount.

Proceeds from the Gift and Information Center will help the Friends provide interpretive support and enhancement for Shore Acres as well as other parks in the Sunset Bay Park District. Watch for new plant identification markers this fall and garden nightscaping in the next few years.

If you haven't seen the Center yet, stop by any Saturday or Sunday afternoon. As we have volunteers to work, hours will be expanded to weekday afternoons. If you'd like to help, please call 756-5401.



Doris Emmett explores the Gift Center's possibilities after a visit to the Rose Display Garden.

THANKS (AND MORE THANKS) GOES TO GIFT AND INFORMATION CENTER VOLUNTEERS

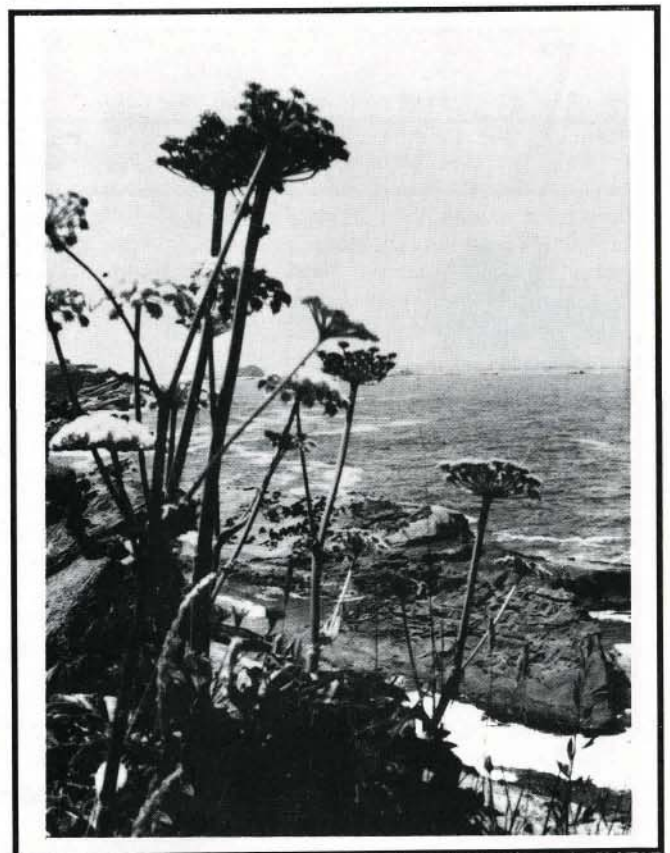
Ellen Garner, Donna Smith, Ann Koppy
Alice Richter, Bill & Lois Harvey, Robin Harms
Irene Quick, Viola Lee, Bernice Borglum
Chris & Donna Flammang, Phyllis Love
Al Aslakson, Claire Kinman, Connie Eslinger
Andy LaTomme, David & Shirley Bridgham
Manager - Tony Mason

+

Any volunteer whose name we've missed!

GIFT AND INFORMATION CENTER HOURS

We are open from 1 pm - 4 pm weekends.
Hours will be **expanded** as we get more help.
If you want to help, call 756-5401.



MEMBERSHIP AND GOALS

HELP WANTED

GARDEN SITTERS

Meet and greet visitors at Shore Acres Gardens. Hours flexible! Call George Guthrie at 888-3732.

VOLUNTEER GARDENING

Special projects under supervision of state parks personnel. Call George Guthrie at 888-3732.



The Friends of Shore Acres is an incorporated, private non-profit organization with tax-exempt status. Its purpose is "to participate in interpretive, educational and physical development programs with Sunset Bay Park District."

Board of Directors

Shirley Bridgman, President
Dick Hansen, Vice President
George Guthrie, Sec./Treas.
Al Aslakson
David Bridgman
John Bergen
Ellen Garner
Howard Hall
Ann Koppy
Tony Mason
Nellie Ripper

Newsletter Editors

Shirley & David Bridgman

MEETING TIME

The Board meets the first Tuesday of the month at 7:30 p.m. From June through September the meetings are at the Garden House at Shore Acres. From October through May they are held at SWOCC.

NEW MEMBERS SINCE MAY 31

Victoria Earl - Individual
James & Irene Johnson - Family
George & Jane Jones - Patron
Jean Leeper - Individual
Thomas Leeper - Individual
Joy McCarthy - Individual
Dean & Carolyn Russell - Patron
Stan Sweet - Student
Barbara Tyndall - Individual
Brian & Leslie Zaro - Family



MEMBERSHIP

An important part of any non-profit organization is its membership support base. Membership is the foundation for achieving our many goals for Shore Acres State Park. *

- * Gift and Information Center - (educational & interpretive items)
- * plant I.D. markers for the gardens
- * interpretive signs
- * garden nightscaping
- * interpretive materials for self-guided walks - coast trail, etc.
- * special annual events:
Rhododendron Sunday/Mothers Day
Rose Sunday/Fathers Day
Christmas Lights & Open House

MEMBERSHIPS NEW OR RENEWED GOOD THROUGH 1990

Membership categories for all levels of support are available. Membership runs from January 1st to December 31st.

Senior or Student	\$5
Individual	\$10
Family	\$15
Patron	\$25
Sponsor	\$50
Benefactor	\$100
Sustaining	\$250
Life Membership	\$500
Gift	_____

Members receive a membership card, window decals, quarterly newsletter, and 10% discount on Friends sales items.

In addition, memberships of "Sponsor" and above will receive special recognition from The Friends.

Fill out the information listed below and return with your check or money order to:

The Friends of Shore Acres

P.O. Box 1172

Coos Bay, OR 97420

Name _____

Address _____

Phone _____

home

work

For more information call:

(503) 888-4902 or 888-3732



P.O. Box 1172
Coos Bay, OR 97420

NON-PROFIT ORG.
U.S. POSTAGE
PAID
Coos Bay, OR
97420
Permit No. 305

