



Volume III, No. 4

Quarterly Newsletter

August 1, 1990



**Rhododendron Sunday  
Mother's Day**

**Spring Events  
Attract Thousands!**



**U.S. Coast Guard  
"200 Years"  
Commemorative  
Celebration  
Memorial  
Weekend**



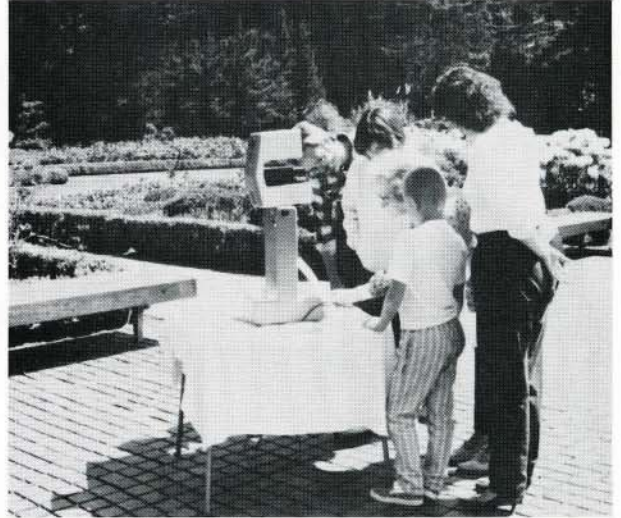
**more >**



## SPRING EVENTS



Life saving demonstrations



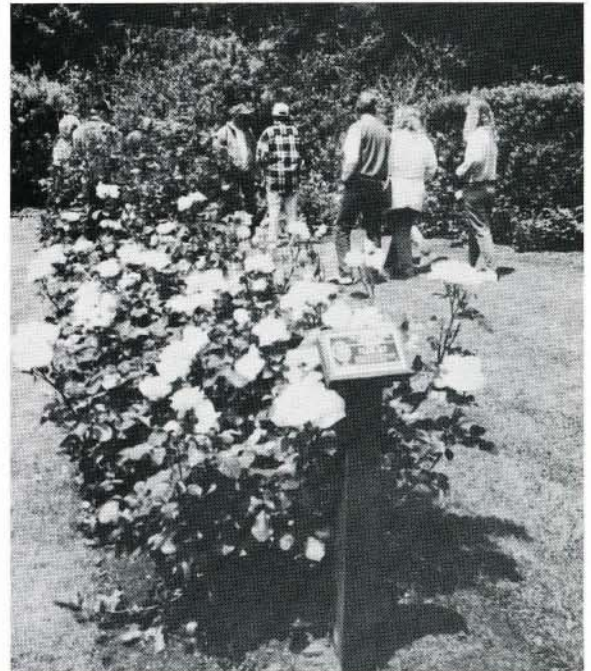
ESA sorority members photographed mothers and families.

## Rose Sunday - Fathers Day



"Friend" Helen Doving answers questions.

*Thanks to Ray Duskin, Helen Doving and Jay Dow of the Southwestern Oregon Rose Society, visitors had their questions answered about growing roses on the south coast of Oregon - not an easy job, even for the experts!*



Visitors explore prize-winning roses in the Display Gardens.



## VISIT THE GARDENS

### GARDEN NOTES

by George Guthrie



Ironically, one of the most distinctive symbols of Southwestern Oregon, our native myrtlewood tree, is probably also the most misunderstood.

Everybody seems to love something about the myrtle, especially all the neat knick knacks that are made (and sold) from "genuine Oregon myrtlewood."

But few of us seem to know much about the plant itself. After reading the "legend of the myrtlewood" on some of the postcards you can come away thinking that our myrtle should be a likely candidate for rare and endangered species classification. After all, "it only grows here and in the Holy Land."

Luckily for it and us, however, Oregon myrtle not only grows wild around here but extends naturally down through a large part of California. Its scientific name, *umbellularia californica*, indicates that it was first discovered in the golden state anyway, and it doesn't grow in Palestine at all.

Why the conflicting stories? Probably the whole mess derives from a confusion of names. Cross the state line and "Oregon myrtle" becomes "California laurel," not to mention California bay, pepperwood, and several other names as well. Because of the differing names, people come to the conclusion that they are different trees - but to mutilate Shakespeare, "A myrtle by any other name smells just as strong!"

The Holy Land connection comes from the fact that there is something called a myrtle in that neck of the woods - the "true" myrtle (*myrtus communis*) is at best a shrub and has very different flowers and fruit - it's not even a third cousin twice removed to our plant - but because it has the same name it is believed to be the same thing. No way!

Since we're speaking about names, in England our myrtle tree is admired and much planted, but is known as the "headache tree" due to the strong odor of the leaves which allegedly give overindulgent sniffers a real pain. In fact, in



laurel? pepperwood? myrtle?  
Ask George!

Victorian times, ladies were advised to keep away from the tree lest they be overcome by the scent and swoon. How's that for a legend?!

Actually, there's a tremendous amount of interesting bits of history, botany, woodcraft and cuisine (the leaves can be used as a substitute for true bay leaves which come from the Grecian laurel (*laurus nobilis*, a close relative of our tree). But, I think you get the picture - even without the legend and the hype, our myrtle is a useful, beautiful and an interesting tree in its own right.

### THANK YOU, FRIENDS AND VOLUNTEERS!

Lieutenant Bruce Grinnell  
Petty Officer Gordon Shirey  
Lieutenant Mike Hargadon  
Petty Officer J.D. Lawrence  
Lieutenant (j.g.) Tim Fitzpatrick  
Petty Officer Bob Sacks  
Petty Officer Darrell Hackworth  
Peter DeFazio  
Ann Koppy  
Coos County Historical Society Museum  
George Guthrie  
Claire Kinman  
Steve and Jan Hooper  
Warren Hulbert  
Sheila Myhrvold

Shore Acres Concert  
and  
Raspberry Sundaes -  
a winning combination  
(details and names, next issue)

Lieutenant Mike Plotcia  
Petty Officer Tom Robinson  
Lieutenant (j.g.) Doug Stephan  
Petty Officer Dave Hoover  
Ensign Rick Christoffersen  
Petty Officer Scott Durrer  
Jana and Bill Doerr  
Bingo and Ginger Sawyer  
Harry and Alta Wilson  
Andy LaTomme  
Ellie Kinney-Martial  
Pearl Affholter  
Chris and Donna Flammang  
Jan Shields  
David and Shirley Bridgham

**And anyone whose names we may have missed!**



## FRIENDS AND STATE PARKS

### PARK NOTES

by Andy LaTomme



WOW! Talk about a glorious fourth of July! Not only were this year's fireworks some of the best I've seen, but things were great in the district's parks as well. All of the campgrounds were full, and lots of folks were enjoying the sunshine in the eight day-use areas from Cape Arago to the Umpqua River.

Perhaps one of the most exciting things this summer started in May when the Gift and Information Center at Shore Acres opened for business full time. (Well, six hours a day and seven days a week is pretty close to full time.) Through the efforts of Park Hosts during the week and Friends volunteers on weekends, we've helped a lot of visitors enjoy the gardens and surrounding area. It does a park manager's heart good to know that folks who come to his parks get a friendly, personal "hello" and accurate information when they visit. Thanks to all of you who represent us so well.

And, as if a full-time Gift and Information Center wasn't enough, on July 2nd, our Park Hosts started showing "The Shore Acres Story" in the garden house! Thanks to a matching grant from State Parks and the persistent work of the Friends, Sunset Bay District has its own state-of-the-art multi-image slide projection system. The fascinating history of Louis Simpson and Shore Acres State Park is shown Monday through Friday (unless the house is reserved), every hour on the half hour starting at 11:30 a.m. So far, the daily attendance has averaged 125 people. Come on out, see the program, then show your Friends membership card to the host and get a back stage tour. Both the show and the hardware that puts it on are impressive. But then so is Shore Acres . . . . .

### PARK HOST VOLUNTEERS

Burt and Sara Meglitsch  
Bob and Trish Biggs  
Paul and Evelyn Findlay



Volunteer Vera Fusano helps visitors at Gift and Information Center.

### GAIC VOLUNTEERS '90

*Tony Mason - Manager*

*Volunteer Coordinators  
Ellen Garner & Connie Eslinger*

Anna Mae Barnes  
Doris Emmett  
Bob Emmett  
Helen McElravey  
Florrie Fox  
Beth Andersson  
Bea Faris  
Georganna Casey  
Bill Harvey  
Lois Harvey  
Vera Fusano

Winnie Pitzenberger  
Alice Richter  
Jan Wilson  
Lorna Richards  
Peggy McGuire  
Claire Kinman  
Lee Martindale  
Frances Martindale  
Ellen Garner  
Connie Eslinger  
Carolyn Jenkins



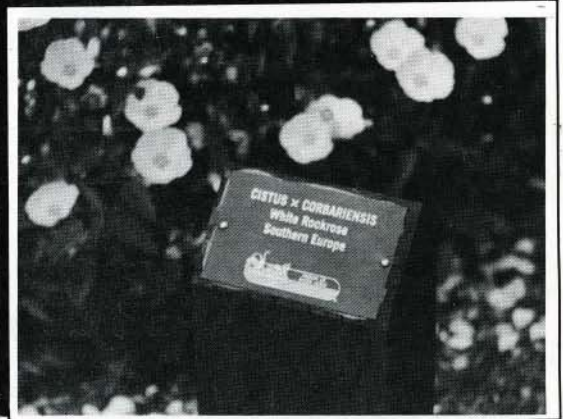
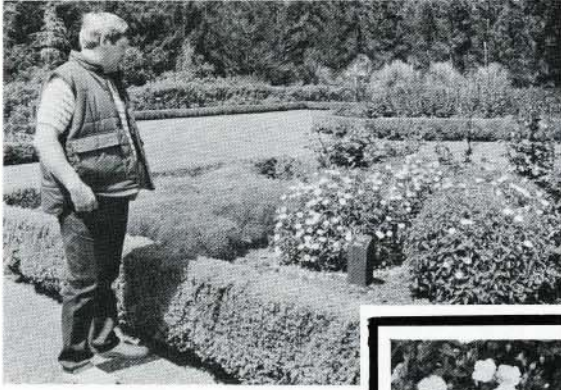
Volunteer Winnie Pitzenberger answers plant questions.



## ACTIVITIES

### PLANT IDENTIFICATION MARKERS

As part of an Eagle Scout project, Stuart Leslie took on the job of cutting and installing the posts for the new plant markers purchased by the Friends. Helping with the project were Leslie family members including Lanny, Evelyn, Don, Russ, Norma, and Kyle. Also volunteering were Jim, Judy, Jennifer, Jared and Joseph Moyer and Peter Ballantyne. Park personnel included Andy LaTomme, George Guthrie and Ellie Kinney-Martial.



Andy LaTomme fastens marker plate to post. The plates are 3"x5", .032" thick, and made of photo-sensitive anodized aluminum. Generally, they are marked with the scientific name, common name and place of origin. A visitor (upper left) found that they are easily read from a distance. He said, "These are really great!"

### THE SHORE ACRES STORY

17 minute three-projector multi-image slide show

Traces the history of the Simpson estate and how it became Shore Acres State Park.

Showing **weekdays** at the Garden House  
(unless house is reserved)

### SHOWTIMES

11:30 12:30 1:30 2:30 3:30



## LOOKING FORWARD

### **SANDBLAST '90**

**Annual Car Display**

**Shore Acres State Park  
(grassy infield)**

**Saturday, August 11, 1990  
1 pm - 4 pm**

**More than 100 cars on display!**

**Sponsored by  
Southwestern Oregon  
Street Rods Association**

**Don't miss it!**

\* \* \* \* \*



1989 show drew nearly one thousand



### **HOLIDAY LIGHTS '90**

As we finish the summer activities, our thoughts and energies turn toward December and the holiday lights display and open house. Last year *Christmas at Shore Acres* drew 35,000 visitors with a display of 25,000 lights. This year we will display 40,000 lights!

If you helped last year and/or indicated your willingness to help again, you will be contacted. One meeting has been set so far - **Outside lights committee, August 23, 7:30 p.m. at the Gardens.** Anyone interested is welcome to attend this meeting.

We are looking for an **entertainment coordinator** and a **host coordinator**. Please call 756-5401 if you are interested.

The lights pledge campaign has been very successful and we've nearly reached our goal. Thanks goes to the following for their generous donations: **Clair & Diane Jones, Seabasket & Terry Travel; Ticor Title Insurance Company; E.L. Edward Realty Inc.; W.L. Conrad Lumber Co., Inc.; Security Bank; Coos Bay Eagles, Aerie #538; Judy & Jim Gilbert, Honda World; Pacific Power & Light; North Bayside Grange #691; Richard N. Vigue, Northwestern Mutual; Marilyn Turner, Pony Village Motor Lodge; Bob Laird; Canned Food Grocery Outlet; Coos Bay-North Bend Rotary; Sause Bros. Ocean Towing Co.** If you want to help with the Holiday Lights and Open House, call 888-4902 or 756-5401 or 756-3732. Thanks!!



## LOOKING FORWARD

### CALENDAR



August 7 7:30 pm  
Board Meeting, Garden House

August 23 7:30 pm  
Outside Lights Committee, Gardens

September 4 7:30 pm  
Board Meeting, Garden House

September 11 7:30 pm  
Annual Meeting, Garden House

October 2 7:30 pm  
Board Meeting, TBA

October 4 6:30 pm  
Volunteer Appreciation Dinner

October 12, 13  
State Co-Op Conference, Salem



Don't miss the dahlias!

### MEMBERSHIP



**The Friends of Shore Acres** is an incorporated, private non-profit organization with tax-exempt status. Its purpose is "to participate in interpretive, educational and physical development programs with Sunset Bay Park District." Membership categories for all levels of support are available. Membership runs from **January 1st to December 31st**. As a member, you will receive a membership card, "Friends" decals and the quarterly newsletter. You will also receive a 10% discount on sales items if you show your membership card at the Gift and Information Center. To become a member or to renew your membership, fill out the application form and return with your check or money order to **Friends of Shore Acres, Inc., P.O. Box 1172, Coos Bay OR 97420**. For more information, call 888-4902 or 888-3732 or 756-5401.

Senior or Student \$5 [ ] Individual \$10 [ ] Family \$15 [ ] Patron \$25 [ ]

Sponsor \$50 [ ] Benefactor \$100 [ ] Sustaining \$250 [ ] Life \$500 [ ] Gift \_\_\_\_\_

Name \_\_\_\_\_

Address and phone number \_\_\_\_\_

***Please circle any activities you would like to help with.***

Board of Directors   Gift and Information Center   Garden Sitting/Tours   Pond Cleaning

Rhododendron Sunday/Mothers Day   Memorial Day Commemorative Celebration

Rose Sunday/Fathers Day   Oregon Coast Music Festival/July   Holiday Lights & Open House/December





P.O. Box 1172  
Coos Bay, OR 97420

NON-PROFIT ORG.  
U.S. POSTAGE  
**PAID**  
Coos Bay, OR  
97420  
Permit No. 305

