

FRIENDS OF
SHORE ACRES

Volume III, No. 3

Quarterly Newsletter

May 1, 1990

Annual "Muckraking" Shore Acres Oriental Pond



Ward Robertson photo



FRIENDS AND VOLUNTEERS

POND CLEAN-UP

Volunteers from the Bureau of Land Management, the Friends of Shore Acres, Scouts, and state park staff cleaned the Oriental pond from top to bottom, Saturday, April 21.

Lily expert Hal Sinclair, with the help of Dexter Dewey, Robin Lucas (of Dexter, Oregon) and several others, took care of the lilies. Hal said, "Years ago, I donated many of the lilies and I told George (Guthrie) I would help this year. Some of the lilies we have now are from plants that were in the original pond."

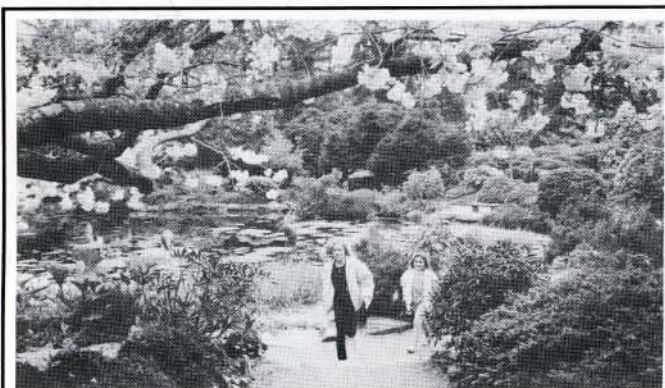
Saturday's "muckrakers" worked hard from early morning until late afternoon. BLM's high volume pump made the job a lot easier. Because of it, only the last part of the work had to be done with a bucket brigade. BLM volunteers included Gregg Nelson, Lisa Bode, Ron and Lewie Patnode, Lloyd Geraths, John and Matt Fields, Scott Knowles and Kermit Baty. Others were Tim Grubert, Steve and Barb Fowler, Paula Wilson, Chris, Laurel and Whit Hamilton. Bill Hudson of BLM documented the project on video.

Other volunteers were Scouts from the Order of the Arrow: Matthew LaTomme, Matt Drechsel and Robert Monroe.

Park personnel working on their own time were Frank Eckley, his son Shad and Andy LaTomme.

"Friends" volunteers included Mike Bishop, David Bridgham, Shirley Bridgham, Connie Eslinger, her daughter Arianne, and Gloria Geraths.

During the day many volunteers and park visitors asked, "What happens to the coins?" David Bridgham, President of the Friends of Shore Acres answered, "Most of the coins are in such poor condition after being in the pond for so long, they can't be recirculated. So, we're still looking for a good way to use them."



All ages enjoy the Spring blossoms.



From Payless - Dave Bowman, Jay Audiss, Sharen Diven, From S.A.- George Guthrie

NEW TREE

"Do you have a myrtlewood tree?" Next to "Where was the mansion?" this may be one of the most frequently asked questions at Shore Acres Gardens.

Now, thanks to the employees of North Bend Payless, we can answer, "Yes. You'll find it next to the Garden House."

On April 24th, in honor of Earth Day, Sharen Diven who coordinated the effort, and Jay Audiss, assistant manager, delivered a 4' myrtlewood tree. George Guthrie had a space reserved for it where visitors can easily find it. Take a look, next time you're at the Gardens.

And, thanks, Payless!

**Watch for new plant markers
in the Gardens this Spring!**

VISIT THE GARDENS

GARDEN NOTES

by George Guthrie



Here's a brain teaser for you - how is it that all azaleas are rhododendrons, but not all rhododendrons are azaleas? Well at least to botanists and similar-learned folks, "There ain't no such things" as azaleas in the strict sense of the word. What we as gardeners call azaleas are merely a

particular subdivision of the very large rhododendron genus - that happens to differ in comparatively minor technical points from "normal" rhodies. They differ in the number of stamens in their individual flowers and the lack of microscopic scales on the undersides of their leaves.

That's why if you or I look in a manual of local plants we probably would see our deciduous native azalea listed as rhododendron occidentale right next to our evergreen rhododendron macrophyllum. Though they look like different plants to you and me, to the scientist they are as brothers.

Luckily in the real world, though, separating rhodies and azaleas makes a certain amount of practical sense - especially regarding their use in the garden. For our purposes, we can split rhodies from azaleas in two ways:

(A) evergreen azaleas that tend to have comparatively small leaves with comparatively small flowers in few-flowered clusters (for example "hino-crimson" azalea that is blooming now) But notice that because there are zillions of these small flower clusters, the net effect is just as spectacular as a plant that has large flowers.

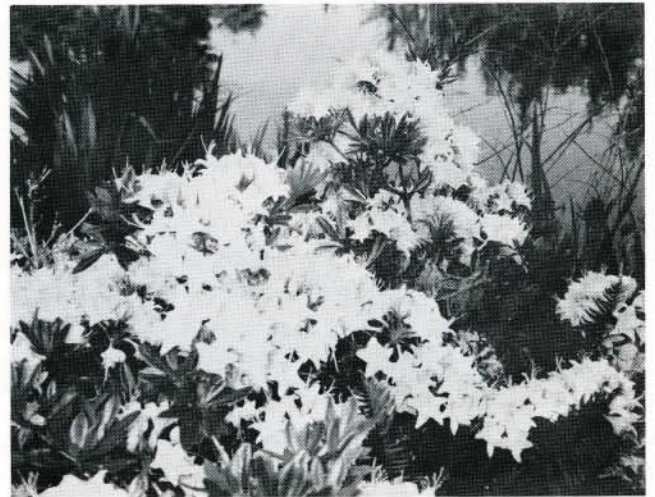
(B) deciduous azaleas with larger leaves and comparatively large (sometimes) fragrant flowers - but still in comparatively few-flowered clusters - typified by "Kosters Red" and "Cecile" hybrids and our good old native azalea.

Both azalea groups can be distinguished from plain rhododendrons that tend to have comparatively large evergreen leaves and large flowers in many-flowered clusters. Examples include "Jean Marie," "Unique," and our native rhodie.

Besides, both types of azaleas tend to at least tolerate more sunshine, heat and dry conditions than rhodies like.

Now, I must admit there are exceptions to every rule especially to casual rules of thumb like the above. But, it offers a semi-practical way of figuring out who's a rhodie and who's an azalea even if

**Rhododendron Sunday
Mothers Day - May 13
Garden House Open - Displays
Noon - 4 pm
Rhododendron experts to
answer questions**



Azalea? Rhododendron? Ask George!

they're all rhodies anyway. Still confused? Welcome to the wonderful world of gardening!!

Don't despair. Even if you're not sure if that plant in front of you is a rhodie, an azalea, or for that matter, a giant night-blooming Burmese kumquat, help is on the way. The "friends" are putting out a brand-new system of plant identification markers. Each marker will be photo-engraved metal and mounted on a treated wood post - initially one for each of a hundred different plants throughout the garden. These signs are both durable and handsome and they will be a great help to everybody (forgetful park rangers included) who wants to know what they're looking at. Mounting and placing the markers will be done by Stuart Leslie as part of a local Eagle Scout project. With luck we'll see our new signs in the ground by Mothers Day. Check them out - they're really fine!!

George

FRIENDS AND STATE PARKS

PARK NOTES

by Andy LaTomme



In our last newsletter, I shared the description of the Shore Acres' wave as written by Samuel Boardman, the first State Park Superintendent. It was included in his paper, "*Coos Head Marine Wonderland*," as is this chronology, tribute and advice:

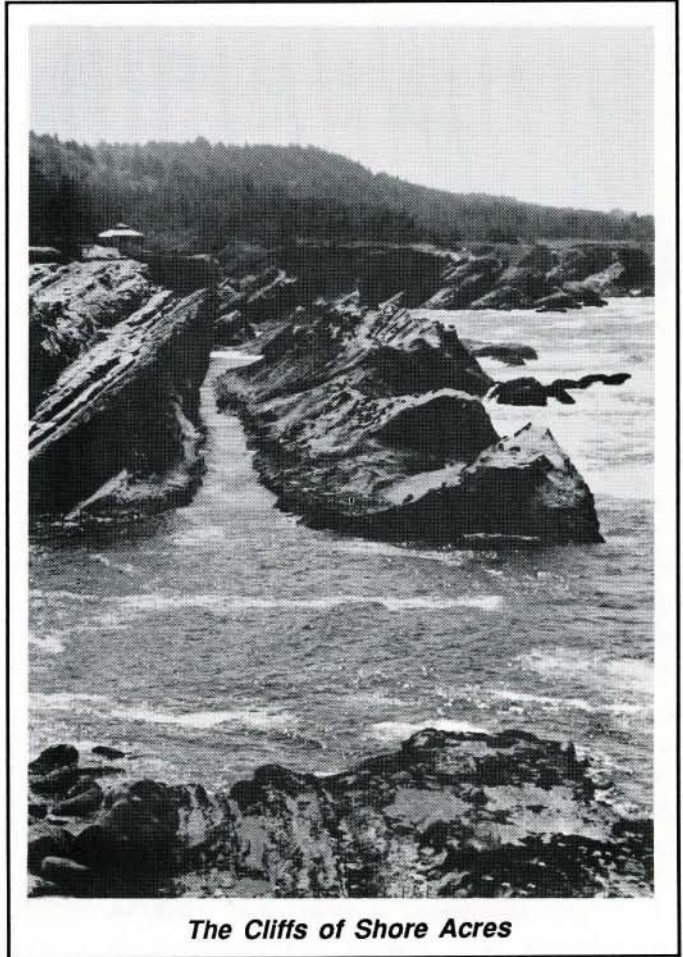
"The first sea pearl of this ocean link came to the state in the form of Cape Arago. It was originally given to Coos County by Louis and Lela Simpson. On June 1, 1932, Coos County, with the full accord of Mr. and Mrs. Simpson deeded to the state Cape Arago consisting of 134 acres.

The next sea link in this ocean chain was the acquisition of the L.J. Simpson estate, known as Shore Acres. This estate was known far and wide for its beautiful seascape, large rambling home, swimming pool, a garden adorned with over 3,000 kinds of plants, many of them secured from distant parts of the world.

The estate contains 637 acres, which Mr. Simpson sold to the state for \$29,000. He spent many thousands of dollars in the development of Shore Acres, a sure sale to some Hollywood star for much more than the state paid him, but he wanted the people of his state to forever enjoy its beauty. Mr. Simpson was that way, generously giving, sharing his fortune with his fellow man.

...May the memory of Louis Simpson's love for his fellow man ever be refreshed as we walk the trails of his woodlands.

Next to be acquired of their marine scenic treasures is snug Sunset Bay, a picturesque harbor for light draft fishing boats. Strange as it may seem, Coos County acquired Sunset Bay for unpaid taxes. An advertisement inserted by the Coos County Court for the sale of the property, caught the eye of the writer,



The Cliffs of Shore Acres

causing a hurried trip to Coquille. On February 19, 1948, the County Court deeded to the state Sunset Bay, containing forty-eight acres."

In the foregoing is a marine wealth of recreation and commercial value incomparable. So close to our eyes we do not see its tomorrows. Be as relentless in its preservation as the battering waves upon its shores.

**Rose Sunday
Fathers Day - June 17
Garden House Open - Displays
Noon - 4 pm
Rose experts to answer
questions in the All America Rose
Display Garden**

ACTIVITIES

BEACH CLEAN-UP

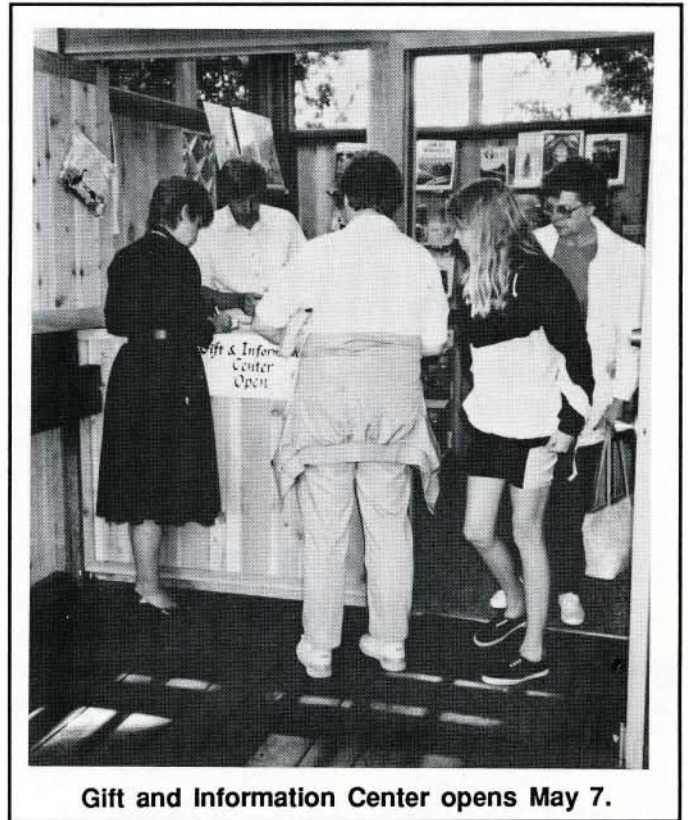
by Pam Stevens

On March 17th, 1990 Oregon State Parks and Recreation sponsored its 5th annual Coastal Beach Clean-up. Under the theme of "Company's Coming" hundreds of volunteers scoured the beaches in preparation for summer enjoyment by themselves and out-of-state visitors.

The Sunset Bay District successfully cleaned up approximately 15 miles of ocean shore from Winchester Bay to Shore Acres State Park. We had lots of help from concerned citizens, park staff and local service organizations including Hauser Dune Riders 4-H Club, North Bend Kiwanis and Key Club, Cub Scout Packs 310 and 761, South Slough Estuarine Sanctuary, BAH Emergency Room and Horning Brother's Sanitation Service. First Interstate Bank provided posters, brochures and t-shirts for access volunteers.

Over 100 volunteers turned out on district beaches to pick up a variety of garbage. Items picked up ranged from plastics including jugs, strapping, lids, rope, six pack yokes, garbage bags, paper goods, styrofoam, tires, floats, glass, a chair and hide-a-bed. Most people agreed that there was less garbage than there had been in the past. Collectively, our district picked up about 2 tons of garbage. Statewide, the clean-up netted about 15 tons from coastal beaches.

PAM STEVENS



Gift and Information Center opens May 7.

CONNIE'S CORNER

by Connie Eslinger

Christmas is over and the lights are down. What comes next?

For our volunteers who have been so generous with their time and energy, we have a new volunteer program.

It will begin with an orientation for those volunteers who plan to work in the **Gift and Information Center**. The first session will be Saturday, May 5 at the Sunset Bay office. For those of you that don't know where that is - it's Andy's office overlooking Sunset Bay.

Following the information portion, participants will tour the gardens and receive a reference manual. The manual will include information about the history of Shore Acres. Our plan is to have an orientation session for all volunteers. Our goals are to give the volunteers the information about Shore Acres and the surrounding parks that they need plus create a sense of expertise and a sense of unity among the volunteers. **Please call 888-4902 if you would like to attend the orientation, May 5.**

Connie



AND MORE ACTIVITIES

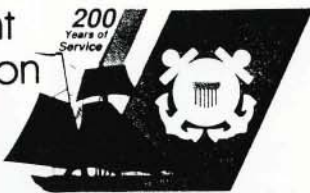
RHODODENDRON SUNDAY MOTHERS DAY, MAY 13

The Gift and Information Center and the Garden House will be open for Mothers Day. The Garden house will have cuttings from the winning specimens of recent Rhododendron Show Sponsored by the Southwestern Oregon Rhododendron Society. Experts will be on hand to talk about Rhododendrons. The Florence Rhododendron Festival Court will greet visitors.

*If you'd like to help,
call 756-5401.*

U.S. Department
of Transportation

**United States
Coast Guard**



COMMEMORATIVE CELEBRATION MEMORIAL DAY WEEKEND

The United States Coast Guard celebrates its Bicentennial this year. Shore Acres State Park, The Friends of Shore Acres and Coast Guard from the North Bend Air Station and the Motor Life Boat Station in Charleston will host a commemorative celebration at **Shore Acres State Park May 26, 27 and 28.**

The Garden House will be open from noon to 4 pm Saturday, Sunday and Monday with a display of artifacts dating back through the U. S. Coast Guard and its former beginnings, the Life Saving Stations. This display is made possible with the cooperation of Ann Koppy and the Coos County Historical Society Museum.

In addition, a video of Coast Guard activities will be shown. Coast Guard personnel and Friends volunteers will greet visitors. A jet helicopter will be stationed (on duty) near the Observation Shelter at the bluff. The third display will be a rigid-hull inflatable life boat.

If things go according to plan, two coast lighthouses will also be open for visitors during the weekend - the Umpqua Lighthouse near Winchester Bay and the Cape Blanco Lighthouse near Port Orford. Watch your newspapers for further information.



Tony Mason photo

ROSE SUNDAY FATHERS DAY, JUNE 17

The Garden house will again be open. Displays about Shore Acres history and refreshments will greet visitors on Rose Sunday. Experts will be in the All America Rose Display Garden talking to those who either grow or enjoy roses. This time of year usually finds the roses in spectacular bloom.

OREGON COAST MUSIC FESTIVAL July 13 -28

*Concert in the Gardens
Friday, July 20 - 12:30 pm*

Free concert featuring **Southern Lights**, a multi-traditional group that performs a blend of folk jazz and new age music. Friends volunteers will park and un-park cars on the infield and serve "very-berry" chocolate sundaes and soft drinks.

MOVING ALONG. . . .

GRANTS AWARDED

by David Bridgham

We have had a very successful granting cycle with State Parks in Salem. All nine co-op "Friends" groups within the State Park system were asked to apply for special project grants. The current state legislature biennium has funded \$50,000 to be made available to Co-ops for matching grants.

The Friends of Shore Acres submitted 7 grant projects. Five were granted. We have until June of 1991 to match \$9,100 to complete the projects.

The projects include:

(1) Purchase copies of Stephen Dow Beckham's book, The Simpsons of Shore Acres (to be reprinted).

(2) Audio Visual Playback Equipment - Equipment to show the slide program "The Shore Acres Story" in the garden house, Mondays through Fridays throughout the summer and fall.

(3) Recording Living History Audio Tapes - The equipment and qualified interviewer to record 30 or more interviews with people who have knowledge of the Simpson/Shore Acres era.

(4) Interpretive Signs Overlooking Simpson Reef - Three 2'x 6' panels with interpretive information about the migratory patterns of the mammals and birds of the pacific coast and insights to the creatures commonly found offshore at this overview.

(5) Shore Acres Gardens Viewbook - A 16 page full color viewbook that covers all the aspects of the gardens throughout the year.

State parks encouraged us to be creative in both the variety and number of projects applied for. Our success exceeded our expectations and we find ourselves looking for both private and corporate sponsorship to meet our grant-matching goals for 1990-91.

These are all worthwhile projects that are a part of our mission "to participate in interpretive, educational and physical development programs with Sunset Bay Park District."

MEMBERSHIP



The Friends of Shore Acres is an incorporated, private non-profit organization with tax-exempt status. Its purpose is "to participate in interpretive, educational and physical development programs with Sunset Bay Park District." Membership categories for all levels of support are available. Membership runs from **January 1st to December 31st**. As a member, you will receive a membership card, "Friends" decals and the quarterly newsletter. You will also receive a 10% discount on sales items if you show your membership card at the Gift and Information Center. To become a member or to renew your membership, fill out the application form and return with your check or money order to **Friends of Shore Acres, Inc., P.O. Box 1172, Coos Bay OR 97420**. For more information, call 888-4902 or 888-3732 or 756-5401.

Senior or Student \$5 [] Individual \$10 [] Family \$15 [] Patron \$25 []

Sponsor \$50 [] Benefactor \$100 [] Sustaining \$250 [] Life \$500 [] Gift _____

Name _____

Address and phone number _____

Please circle any activities you would like to help with.

Board of Directors Gift and Information Center Garden Sitting/Tours Pond Cleaning

Rhododendron Sunday/Mothers Day Memorial Day Commemorative Celebration

Rose Sunday/Fathers Day Oregon Coast Music Festival/July Holiday Lights & Open House/December



P.O. Box 1172
Coos Bay, OR 97420

NON-PROFIT ORG.
U.S. POSTAGE
PAID
Coos Bay, OR
97420
Permit No. 305

