



Volume IV, No. 3

Quarterly Newsletter

May 1991

## SPRING . . . TO SUMMER

**S**pring is a time to get ready for summer at Shore Acres, Sunset Bay, Cape Arago and all of the beaches on the coast. This spring was no exception. Volunteers turned out in large numbers to pick up litter on the beaches and clean the pond at Shore Acres.

**P**ond cleaning at Shore Acres was on a very dreary day and all who helped are to be commended for work *above and beyond the call of duty*. The effort was coordinated by park staff (and *Friends*) George Guthrie and Frank Eckley, *Friends* president David Bridgham, and BLM crew leader Gregg Nelson (also a *Friend*).



Others who worked were Connie Nelson (*who, we understand, was not excited about working in the rain, but did so anyway*), Erika & Travis Nelson, Al Swanson, and Monita and Wally Johnson. BLM staff and families included Chris, Kate, Whit & Laurel Hamilton; Steve Fowler; Mel & Sony Chase; Bob Golden; Ed Fisher; Stefania Strzalkowska; Ray and Dotti Orazem; Bill Hudson; and Dennis Phillips. Thanks everyone!



Where'd they go?

### What Happens to the Coins?

For the past two years, we have been storing the coins collected from pond cleaning, in hopes that we would be able to get them cleaned and turned in for reimbursement. Many of the coins are not useable because of the material they are made of and because of the length of time they are in the pond.

Over the past year, *Friend* and park ranger Sharon Williams took on the task of cleaning the coins. She also contacted the folks at Pacific Security Bank in Reedsport and they agreed to send the cleaned coins to the Philadelphia Mint. Because of Sharon's hard work and perseverance and the cooperation of the bank, the *Friends* were reimbursed for more than \$200.



## **FRIENDS OF SHORE ACRES, INC.**

*Quarterly Newsletter*  
published November, February,  
May and August

### **OFFICERS**

David Bridgham, President  
Al Aslakson, Vice President  
George Guthrie, Sec./Treas.

### **DIRECTORS**

Shirley Bridgham  
Connie Eslinger  
Ellen Garner  
Elise Hamner  
Eric Hamner  
Dick Hansen  
Ann Koppy  
Tony Mason  
Dick Van Natta

### **NEWSLETTER EDITORS**

Shirley & David Bridgham

### **GIFT & INFORMATION CENTER**

**MANAGER**, Tony Mason

### **GAIC VOLUNTEER COORDINATOR**

Ellen Garner

### **EVENTS VOLUNTEER COORDINATOR**

Connie Eslinger

### **HISTORIANS**

Dick Hansen

Ann Koppy

### **SUNSET BAY PARK DIST. MANAGER**

Andy LaTomme - 888-4902

### **SHORE ACRES LANDSCAPE**

### **MAINTENANCE SUPERINTENDENT**

George Guthrie - 888-3732

### **HOLIDAYS LIGHTS COORDINATORS**

#### ***Outside Lights & Co-Chair***

Shirley & David Bridgham

756-5401, 267-3012

#### ***Garden House DECORATION***

Connie Eslinger 267-0570

#### ***Cookie Bakes***

Sharon Fortune 888-3173

Pearl Groves 756-5684

#### ***Holiday & GAIC Sales***

#### ***Volunteer Coordinator***

Ellen Garner 888-3484

#### ***Entertainment***

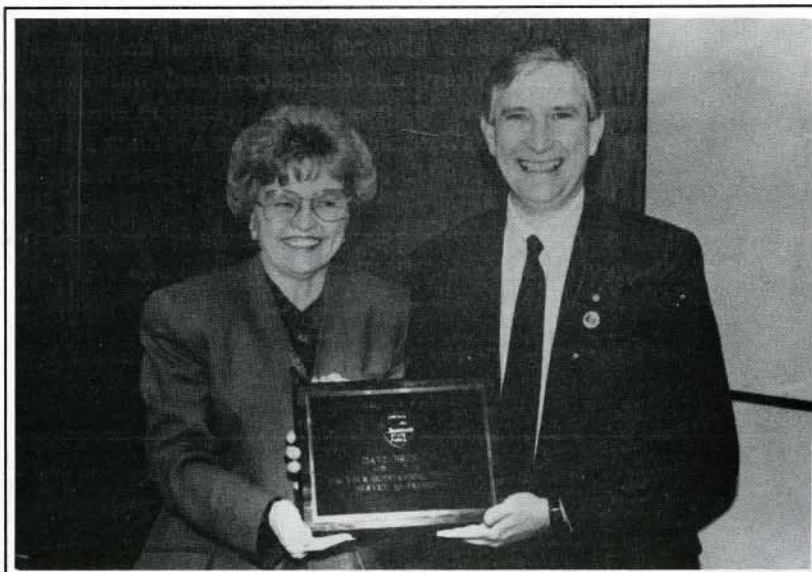
Wanda Graham 756-6789

#### ***Host Volunteers (Individuals)***

Bonnie Koreiva 267-4037

#### ***Host Volunteers (Groups)***

Shirley Bridgham 756-5401



**President David Bridgham honored in Salem.**

## **from the Prez...**

**M**y day in Salem, on behalf of the Friends of Shore Acres, included a morning meeting with twelve other presidents of *Friends Co-ops* state wide. We discussed issues common to all of us, including topics like gift sales and state-wide sales items. Newer *friends* took the opportunity to ask the more *seasoned friends* "how to" questions. The exchange of ideas and the sharing of experiences left us determined to meet at least twice a year.

In the afternoon, we went to the Capital building for afternoon appointments with our local legislators. We talked with them about issues important to Friends of Shore Acres and Oregon State Parks. The *fall-out* from measure 5 has impacted not only state parks, but their relationship to *Friends Co-ops*, as well. Many of our co-operative long term projects have been slowed down, but not stopped. State parks have many friends and supporters in the Legislature.

A big supporter is Governor Barbara Roberts. The reception for the Governor that afternoon was the highlight of the day. It was both, my honor and pleasure to accept recognition from the Governor on behalf of the Friends of Shore Acres. Our organization has accomplished a great deal, and it is because of the efforts of many caring people. We can all feel equally proud of what we have done, and look forward to many new opportunities.



*David*

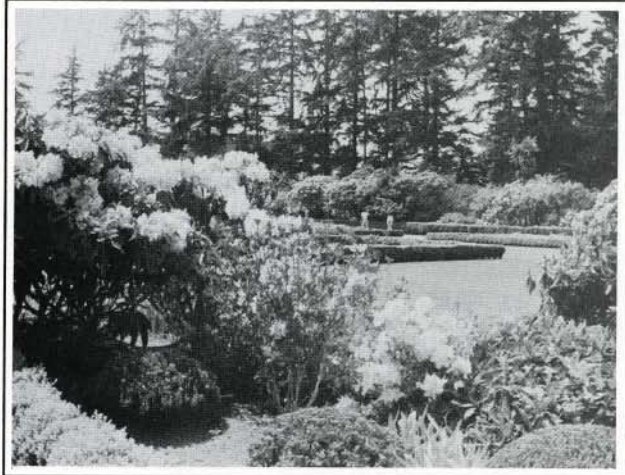


# CALENDAR

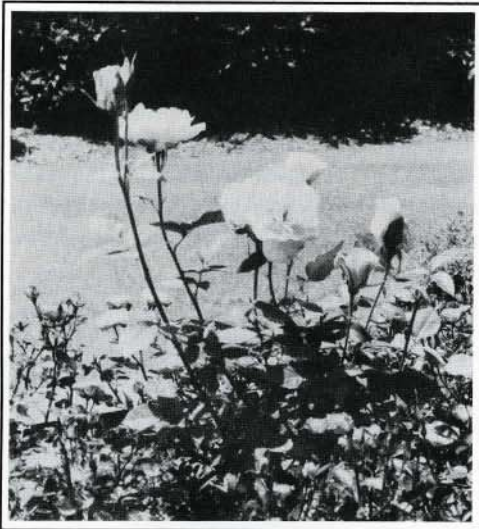
## Rhododendron Sunday / Mother's Day at Shore Acres - May 12

This annual event sponsored by the Friends of Shore Acres, offers visitors the opportunity to have their rhody questions answered by experts and a reminder to visit the gardens at the peak of the rhododendron season. On hand to answer questions will be Shore Acres Landscape Superintendent George Guthrie (*George is also the new president of the Rhododendron Society*) and Tom and Ann Drake from the Southwestern Oregon Rhododendron Society.

An added attraction in the Garden House, will be an exhibit and demonstrations by weavers and spinners from Headles & Treadles, Humbug Mountain Weavers & Spinners, and local members of the Northwest Spinners Association. The house will be open from noon to 5 and Friends volunteers will serve cookies and lemonade and coffee.



## Rose Sunday / Father's Day at Shore Acres - June 16



Shore Acres prestigious All America Rose Display Garden will be featured with this year's new rose winners. From noon to 5 p.m., experts will answer questions about roses in the Display Garden.

This annual event also will feature a wood working exhibit in the Garden House with wood workers on hand to discuss wood types and applications. The house will be open from noon to 5 p.m. and volunteers will serve cookies, lemonade and coffee.

Board meetings will be  
at the Garden House  
June 4, July 2, August 6  
7:30 p.m.

## Oregon Coast Music Festival

### Garden Concert - July 12

***Foxfire***

**12:30 - 2**

(details, page 8)



# GARDEN NOTES

by George Guthrie

**S**hore Acres has finally made it through another winter and as I write this (in late April), both garden and staff are well into spring - with lots of flowers (tulips, daffodils, rhodies, azaleas, cherries, etc.) and lots of weeds (an even greater variety of those).

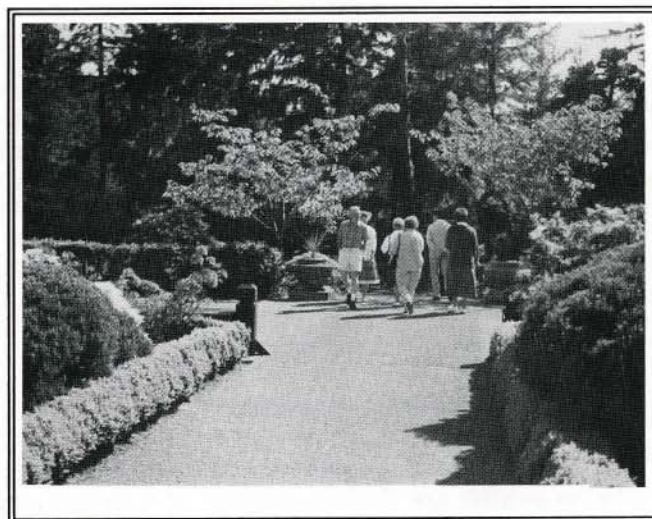
Along with the new growth, we notice (sadly) more and more delayed evidence of damage from December's severe cold snap. Despite our best efforts, a number of our *tree* roses were either killed outright or damaged severely. Their loss is particularly obvious since they serve as the *centerpiece* of our front rose garden.

These types of roses often are very difficult and expensive to replace. Luckily, Rita Crowe and the staff at Jackson and Perkins Bear Creek Gardens in Medford had some replacements and very generously donated them to us. Their kindness should help make our rose beds look a lot better this summer. If you happen to take a stroll through the garden later on this year and like how the tree roses look, please think sincere thoughts of gratitude toward the J and P gang - we do!!

A number of folks have stopped by and talked about winter damage to plants in their gardens and asked our advice about what to do with shrubs that look dead - should they be removed? Our thought is this - If it's a rare plant that you really love or one whose defoliated state doesn't offend you too much - wait, don't prune it or remove it for another month or so.

Check to see if there are buds or regrowth on the lower branches or even at the base. If you see evidence of life then you can prune down to that point and with a little luck, your plant will come back even denser and fuller than before.

Another good check is to lightly scratch small sections of the outer bark from various points along the stem and branches. If the inner bark looks bright green, then you've probably got some life left in the plant. If the inner bark is black, brown or yellowish, you've probably lost it.



Don't give up, plants can surprise you!

However, they can surprise you and come back from below ground level. *Hardy* fuschias are notorious for this. No matter how dead the above branches look, they are probably shooting out like crazy at the base, even as we *speak* - I know that ours are.

Now, if the plants really look dead and especially if they are common and easily replaced and in a highly visual place - then you might as well give them the old heave-ho and buy some replacements. You'll be able to start with healthy vigorous plants and make an *instant* impression rather than have to endure a perhaps lengthy period of recuperation until the old stuff looks presentable.

Plus, you have the pleasure of venting your frustration on the old stuff and the healthful exercise inherent in yarding it out and putting the new guys in - an activity mutually beneficial to body and mind - *well, it was for me, anyway*. We have been doing the same to some of ours so you'll be in (hopefully) good company.

*George*

**Don't miss *Rhododendron Sunday* on Mother's Day, May 12  
and *Rose Sunday* on Father's Day, June 16 !!**



# VOLUNTEER ORIENTATION

by Ellen Garner

**G**ift and Information Center volunteers met April 20th for orientation. Our new smart cash register didn't attend, but word is she'll probably be here for our next meeting. In the meantime, there's a contest underway - *Name the Cash Register*.

President David Bridgham welcomed everyone and Andy LaTomme sent his greetings. David told us about the new SWOCC class for docent training. The first session April 29th will be on hospitality. Our volunteers that attend will have their tuition and lunch paid by FOSA.

Shirley Bridgham showed the multi-image slide program, *The Shore Acres Story* to acquaint volunteers with the history of Shore Acres.

George Guthrie conducted garden tours. The tulips were showy, but George said the display wasn't just for us. All visitors could enjoy them.

Everyone practiced arming and disarming the security system. We looked at the merchandise and went through the procedure for recording sales.

Returning volunteers included Beth Andersson, Anna Mae Barnes, Georganna Casey, Bob and Doris Emmett, Florrie Fox, Gladys Ivy, Claire Kinman, Charlotte Skinner and coordinators Connie Eslinger and Ellen Garner. New volunteers were Rose Slevoigh and Vivian Day.

Those unable to attend will have an orientation at the time we introduce the new cash register. If you are interested in volunteering at the GAIC, please call and leave a message on the Bridgham's answering machine (756-5401) and we will call you.



Volunteers tour the garden with George.



Thanks for volunteering!

**T**he Gift and Information Center at Shore Acres is open for the season. It is staffed by Friends volunteers on weekends and Park Host Volunteers on weekdays. The information provided by the volunteers and the kinds of gift items available reflect the educational value found in a visit to the park by the whole family. It's also an opportunity for visitors to take home something that has enhanced their stay on the south coast. Gift and Information Center hours are from noon to 5 p.m.

**F**rom Monday through Friday the park hosts who operate the Gift and Information Center, also show the multi-image slide program *The Shore Acres Story*, in the Garden House. The 17-minute program tells the history of the Simpsons and Shore Acres and how the park became what it is today.



**Gump's  
Coming**



**Beach  
Clean-Up**

MARCH 16, 1991



We have a lot of ideas for next year's cleanup, including one from David Bridgham. He suggested we start a contest for the most unusual piece of trash found during the cleanup, saving the winning items to use for a public awareness display to show what ends up on Oregon's beaches.

## BEACH CLEANUP

by Ellie Kinney

The cleanup for the Sunset Bay District netted about 3.7 tons of garbage (7,400 pounds). Included in this figure were 257 bags of garbage, 8 tires, plastic buckets and jugs, large chunks of styrofoam, boards, signs, rope, fluorescent light bulbs, chains, pallets and lots of other junk, even an old stereo.

Over 255 people came out to help with the cleanup effort, including many community groups. The Oregon Off-Highway Vehicle Association, alone, sponsored the cleanup at Three Mile Beach. Other help was obtained from the National Association of Women in Construction, the OATVA, Workforce 2000 (from SWOCC), Coos Bay Power Squadron, North Bend Kiwanis, North Bend High School Key Club and numerous scouting groups and 4-H groups.



A special thanks goes out to Horning Brothers Sanitary Service in Reedsport and Les' Sanitary Services, Inc., in Coos Bay for hauling away the trash.

Sheriff Deputy Rod Summers was a lifesaver at Horsfall Dunes. He hauled everything off the beach.



***A special thanks to Oregon State Parks Host Program***

***and to James and Anna Gibboney***

***Park Hosts at Sunset during the month of April.***

***They ran the Shore Acres Gift and Information Center and presented our slide program in the Garden House.***

***THANKS !!!***

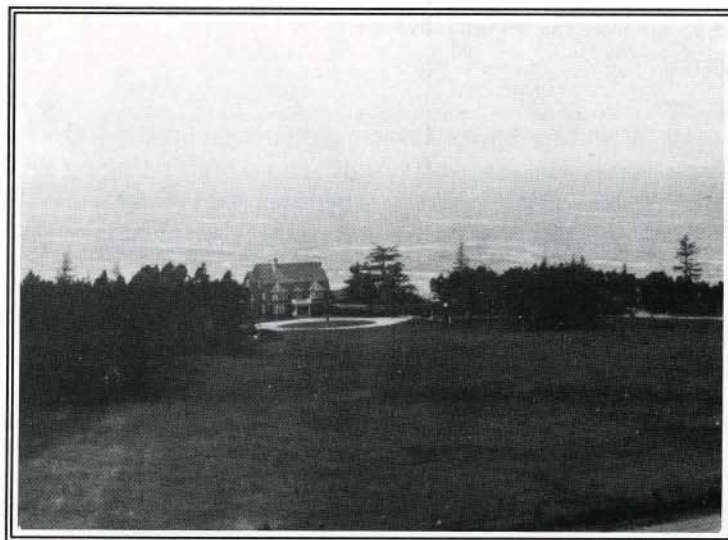


## LIVING HISTORY PROJECT

**T**he *Living History* grant project is well underway. To date, Linda Comstock has interviewed eighteen people who know much of the history of the Simpsons, Shore Acres, Sunset Bay and Cape Arago.

One of those interviewed, Helen Barnard, gave Linda the following written statement. We found it quite interesting and thought you would too.

*"The first house at Shore Acres was finished in 1906 and given to Mrs. Simpson as a Christmas present. It was intended to be their summer home and was furnished casually in wicker and leather chairs and Navajo rugs. Later, upholstered furniture and oriental rugs replace the wicker, which was given to the Commercial Club functioning on the third floor of the Winsor Building at the southeast corner of Sherman and Virginia, North Bend.*



First Mansion at Shore Acres - 1906



A Closer Look

*The living room of the three-story house was 56 by 32 feet, with a staircase in the south end leading to the upstairs bedrooms. Each bedroom was decorated in a different color and designated as the pink, blue, gold and lavender rooms. I remember the Winsors always stayed in the blue room.*

*When the swimming pool wing was added in 1914, the master bedroom with its fireplace was located above the pool wing and included a bathroom and pleasant sitting room.*

*The swimming pool in the Roman bath room was 26 by 52 feet. At the far south end was a mammoth fireplace flanked by shower rooms. The pool wing was entered through a door from the living room into a pretty area centered by a fountain where a white marble statue of a girl looking down at a ring on her finger was placed. Also in this area*

*were hung several cages of yellow warbling canaries. I think my mother said that the statue was a gift from Edith Simpson Pike, L.J.'s sister."*

Linda has interviewed Claudia C. Allsup, Richard J. Anderson, Helen W. Barnard, Anne Collins, Frank Eckley, Lilian Ede, Cranson Fosburg, George Guthrie Jr., Henry Hansen, Dennis Johnson, Grace E. Lark, Harry Lockett, Sabra Lockett, Anna Lunde, Norma Lyons, Alton L. Noel, Ethel Spence and Victor West.

A synopsis of each interview, as well as the audio tapes of those who are willing to be recorded will be used for further historical interpretation of our area.

The project will be completed this summer. If you have information or suggestions of people who should be contacted, please call Linda Comstock at 756-7439.



## FOXFIRE AT SHORE ACRES July 12

The annual Shore Acres garden concert of the Oregon Coast Music Festival will feature the popular singing group Foxfire. The free concert is scheduled for Friday, July 12, from 12:30 to 2:00 and is co-hosted by The Friends of Shore Acres.

Friends volunteers will park cars and sell fresh raspberry and chocolate sundaes and lemonade. The concert is free and everyone is invited to attend.

The Festival offers a wide variety of exceptional music. Those attending will be treated to *classical, folk, pops, jazz*, as well as *big band*. Don't miss it!



Popular singing group Foxfire to perform.

### Oregon Coast Music Festival 1991 - Schedule

July 11	Thurs	Tour Concert - <i>NW Bach Ensemble</i>	Bandon	7:30
12	Fri	Picnic Concert - <i>Foxfire</i>	Shore Acres State Park	12:30
12	Fri	Tour Concert - <i>NW Bach Ensemble</i>	Reedsport	7:30
13	Sat	Band Concert - <i>Concert Band</i>	Mingus Park	12:30
13	Sat	Jazz Concert - <i>It's About Time Big Band</i>	Elks Club (CB)	8:00
14	Sun	Jazz Concert - <i>Glen Moore Ensemble</i>	Harbor Hall, Bandon	8:00
16	Tues	<i>Festival Orchestra</i>	Marshfield Auditorium (CB)	8:00
17	Wed	Tour Concert - <i>NW Bach Ensemble</i>	Florence	7:30
18	Thurs	<i>Festival Orchestra Plays Pops</i>	Marshfield Auditorium (CB)	8:00
19	Fri	<i>Festival Chamber Players</i>	Presbyterian Church (NB)	8:00
20	Sat	<i>Festival Orchestra</i>	Marshfield Auditorium (CB)	8:00

*Intermissions at Marshfield concerts will be hosted by Gourmet Coastal Coffees.*

For ticket information, call BACC (800) 824-8486 or 269-0215.

## LIGHTS ANYONE ?

The Friends are planning for the 5th annual Holiday Lights and Open House in December. Rumor is that there will be at least 75,000 lights and that night-scaping around the oriental pond could become a reality.

Letters for pledges of support will be sent in June and if the response is as good as it was last year, we feel certain that we can accomplish this year's goals.

Lights checking parties will be held this summer and many of you will be called to help. If you'd like to call us - the numbers are 756-5401 or 888-4902.

## MEMORIALS

Memorial contributions to the Friends of Shore Acres are being set aside and will be used at some time in the future to help pay for a new fountain in the center of the formal garden.

Contributions have been given in memory of John Bergen, Robert Hobbs and Earle Livingston.

\*\*\*\*\*



# PERILS OF PARKS

## PART 3

by Andy La Tomme



**W**e left off last time with the brand-new State Parks and Recreation Commission trying to find a stable, dedicated funding source while the 1991 legislature was still in session . . .

Everyone knew state parks had to have money just to keep parks open. On top of that was the 2010 Plan and the millions of dollars needed to give Oregonians the kind of state park system they wanted.

"Where will we find it?" *That was the magic question.*

Lots of suggestions were put forth by the public, by commission members, by parks staff, by legislators and bureaucrats, and by friends and not-so-friends of State Parks. Some said "Let's tax real estate transfers because State Parks are land based." And there were those who thought that made a lot of sense.

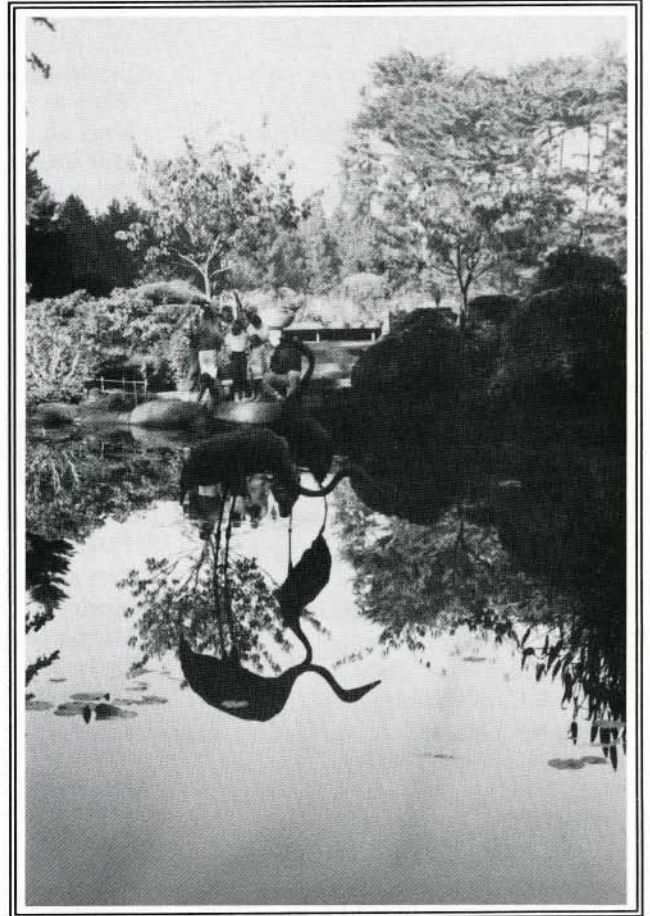
Others said "Wait a minute, we made a mistake -- let's change the Oregon Constitution again and let State Parks use gas tax money like they did in the good old days." Variations on that theme arose. "Let's increase the gas tax by one cent," suggested some. "A Penny for Parks," became their rally cry. A few creative souls thought perhaps redirecting a percentage of the gas tax paid only by RVer's would be the best. They reasoned: "It's not a new tax, it's just a redistribution of the existing one. And who uses parks more than RVer's? Besides, it worked for the Marine Board."

After all those suggestions, the talkers got pretty thirsty, so they took a six-pack to the nearest park bench to cool their fevered brows. Then -- inspiration struck!! Here they were, in a park, drinking carbonated beverages. "Eureka," shouted one. "At last," cried the others. And so a bill was introduced to tax carbonated beverages at the wholesale level with the proceeds to be used for state, county and city parks.

Why not? People drink carbonated beverages in parks all the time. Just ask the ranger who picks up the empties.

Will the bill succeed? Will it even get out of committee? Will it ever get to the Senate and if so what will they do with it? Could it be that state parks has at last found the stable, dedicated funding source it so richly deserves? And what about Measure 5?

(Fade to text: To Be Continued. Organ music swells in the background.)



Crystal clear pond reveals unusual patterns.







## MEMBERSHIP '91

### Life

Sause Bros. Ocean Towing  
Jack & Carol Shinniger  
L.L. Stewart

### Benefactor

Howard Chaney  
Kathleen Grossman  
Clair & Diane Jones  
Life Care Center of Coos Bay  
Bob & Margaret Perkins  
Richard & Patricia Ulp  
Jim & Diane Verger

### Sponsor

Industrial Services, Inc.  
(James C. Guernsey)  
William Moragne  
Andy & Lynn Nasburg  
North Bend Garden Club  
Maybelle Olson  
Dr. Ed Quinn & Dr. Amy Lipton  
Dr. Donna Rabin &  
Dr. W.S. Richardson  
Frank & Donna Smith  
Al & Ellen Stinchfield  
Ted & Carolyn Terry  
Dorothy Vaughn  
Jane & Harold Wrigley

### Patron

Pearl Affholter  
Al Aslakson  
Dorothy Bergen  
Don & Richie Bock  
David & Shirley Bridgham  
Don & Margaret Burdg  
Georganna Casey  
Phillip Cogswell Jr. &  
Kay Hutchinson  
Len & Joyce Farr  
Wallace & Helen Ferguson  
Sandra Field  
Ellen Garner  
Bob & Dorothy Gillett  
Clariece B. Graham  
Chet Haliski  
Howard Hall  
Kenn Hess  
Dr. & Mrs. J.A. Holbert  
Steve & Jan Hooper  
Wilbur & Judy Jensen  
Wally & Monita Johnson  
Charles E. & Mary Jones

### Patron

Stan & Ellie Klenke  
Tim & Ann Koppy  
Tony & Bonnie Koreiva  
Ellie Kinney-Martial  
Lindy Lane Nursery  
(Gus & Anne Langley)  
Mary C. (Kay) Lorence  
Maxine McKenzie  
Dr. & Mrs. Phil Morgan  
Jim & Betty Ohman  
Irene Quick  
Lloyd Quick  
Al & Betty Seelig  
Jim & Lorna Shivley  
Tom & Julie Spence  
Jeff & Vera Taylor  
Lyn & John Topits  
Clare Wehrle  
James & Maurine Wilson

### Family

Teri & Mark Albert  
Marion & Marilyn Andrews  
Mary Bachurin & Paul Weigel  
Patricia Ann & Bill Borchert  
Don & Bernice Borglum  
Jim & Karen Campbell  
Don & Cindy Crawford  
Mitsue & Elwin Deal  
Chris & Donna Flammang  
Jack & Muriel Graves  
Wayne & Pat Haight  
Ron & Bernice Hjort  
Katrina & Donovan Jacobs  
Carl & Marjorie Jensen  
Bill & Billie Kean  
Robert & Carol Lee  
Van & Lois Messner  
Gregg & Connie Nelson  
Mike Perkins & Carol Ventgen  
Carole M. Quick Family  
Al & Sally Roberts  
Dean & Carolyn Russell  
Wm. (Bingo) & Ginger Sawyer  
Henry & Mary Scheirman  
Arlin & Helen Shefstad  
Dean & Dixie Sheldon  
Crystal & Eugene Shoji  
Richard & Irene Sund  
Ed & Judy Swenson  
Dr. & Mrs. Robert Tyndall  
Luis & Josefina Velasquez  
Dick & Judy Wagner  
David & Shirley Wagstaff  
Bill & Shary Werdell  
Janet Wilson

### Individual

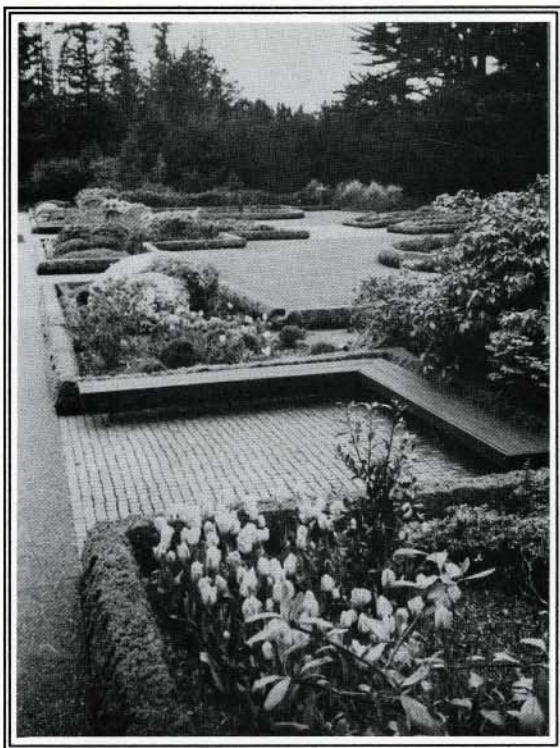
Beth Andersson  
Sandra Archerd  
Anna Mae Barnes  
Barbara T. Chilla  
Marlene M. Dolezal  
Barbara Fowler  
Florence C. Fox  
George Guthrie Jr.  
Mrs. James A. Hanna  
Hauser Garden Club  
Mike Hewitt  
Alice Hobbs  
Jo Jensen  
Carol J. Knapp  
Tony Mason  
Krislee McCoy  
Mildred L. Miller  
Janet Nevin  
Virginia Paczesniak  
Sharon L. Parks  
Mrs. Helen F. Ray  
Lorna Richards  
Archi Rosenthal  
Geneva Selin  
Hal Sinclair  
Charlotte Skinner  
Jean Strehl  
Patty Wylie

### Senior

B & B Bunnell  
Rose Clark  
Rachel Harwood  
Mary E. Hill  
James & Irene Johnson  
Claire Kinman  
Edward E. Lampton  
Myles K. Lowell  
Harry & Sabra Luckett  
Lucy L. Martin  
Pete & Helen McElravey  
Edith I. Menken  
Hazel Pletchney  
Ward & Monica Robertson  
Robert & Florence Ross  
Mrs. James M. Schneider  
Stanley & Margaret Stephens  
Alfred Tyson  
Richard & Jerri Van Natta  
Ken & Dorothy Westland  
Caroline M. Wright







Spring also brings *renewal* to the garden.

## THANKS, MEMBERS !!!

**M**embers are the foundation of the *Friends of Shore Acres*. We appreciate your new and renewed memberships, as well as your volunteer help.

We have coded your address label so you will know if you have renewed for 1991. Current members have a "1" next to the member category code.

*example*

Mr. and Mrs. Jim Friendly BE1  
1435 Shore Acres Lane  
Coos Bay OR 97420

*If we have missed your name on the membership list, please call 756-5401.*

## MEMBERSHIP

***The Friends of Shore Acres, Inc.*** is a private non-profit organization with tax-exempt status. Its purpose is ***to participate in interpretive, educational and physical development programs with Sunset Bay Park District.***

*Membership runs from January 1st to December 31st.*

As a member, you will receive a membership card, *Friends* decals and the quarterly newsletter. You also receive a 10% discount on sales items if you show your membership card at the *Gift and Information Center*. To *become a member or to renew your membership*, fill out the application form and return with your check or money order to ***Friends of Shore Acres, Inc., P.O. Box 1172, Coos Bay OR 97420.***

Individual \$10 [ ] Family \$15 [ ] Patron \$25 [ ] Sponsor \$50 [ ]

Benefactor \$100 [ ] Sustaining \$250 [ ] Life \$500 [ ] Gift \_\_\_\_\_

Name \_\_\_\_\_

Address and phone number \_\_\_\_\_

***Please circle any activities you would like to help with.***

Board of Directors Gift and Information Center Garden Sitting/Tours Pond Cleaning  
Rhododendron Sunday/Mothers Day Rose Sunday/Fathers Day Oregon Coast Music Festival/July  
Holiday Lights & Open House/December





P.O. Box 1172  
Coos Bay, OR 97420

NON-PROFIT ORG.  
U.S. POSTAGE  
**PAID**  
Coos Bay, OR  
97420  
Permit No. 305

