

## FRIENDS OF SHORE ACRES

VOL. II, No. 1

Quarterly Newsletter

November 30, 1988

### CHRISTMAS LIGHTS AND OPEN HOUSE "AN INSTANT TRADITION"

The formal gardens at Shore Acres State Park will again be lighted for Christmas, December 10 thru 30th (including Christmas eve and night).

Last year's event attracted nearly 10,000 visitors from all over the U.S. and from several foreign countries.

Members of the Friends and volunteers from the community will string more than 15,000 lights through the gardens and around the turn of the century garden house. The house will be furnished with antiques and decorated throughout for Christmas. Visitors will be treated to hot spiced cider, cranberry punch, coffee and freshly baked Christmas cookies.

Entertainment is planned for most nights. It will start around 7 o'clock.

New features this year include the first phase of lighting in the parking area and lighted handicap access from the parking to the garden house. Four outdoor trees and three indoor trees will be lighted and decorated.

Admission to the gardens is free, although donations will be accepted.

\*\*\*\*\*



World photo by Matt Andrus

Both Christmas lights and children's faces lit up at last year's tree lighting ceremony. Zane and Zair Burris try to see the top of the center tree as their mother, Mary Burris, explains what's going on.



## VISIT THE GARDENS

### Garden Notes by George Guthrie

As I write this, our beautiful dry "Indian summer" has suddenly taken a dive -- or should I say a bath with belated fall rains washing off the autumn leaves. The annuals that beguiled summer's visitors have gone to compost-bin heaven and the dahlias are getting ready for their long winter's nap in storage. So, what's left at Shore Acres to look at? Well, you can come down and look at the "attack of the giant killer moles", otherwise known as the Friend's project for installing permanent lighting in the garden. Right now it does look rough and dirty but when this work "flowers" at Christmas-time it will make all the struggle more than worthwhile.

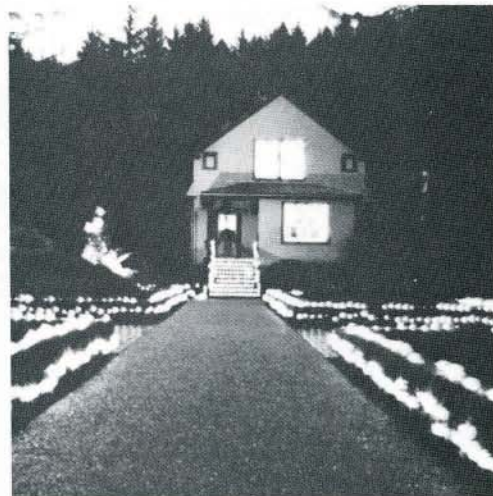
Nevertheless, among all the clutter there are some flowers and fruits worth searching out. At first glance, its glossy evergreen leaves resemble a rhododendron but one look and one sniff at its flowers show that japanese pittosporum or "mock orange" (pittosporum tobira) is no rhodie. The flowers are fairly small but if you bring your nose in close, you'll be rewarded with an exquisite orange blossom scent. There are clumps of pittosporum near the garden house and the rose arbor - well worth checking out for the chance of getting a "mini-vacation" down to Florida - at least as far as your nose is concerned!!

If you take a stroll down the center walk to the Japanese pond - stop and look off to the left of the concrete steps - you'll notice some medium sized bushes loaded with what looks like giant red strawberries (or early Christmas lights?) - What you're really seeing are the fall fruits of the Himalayan strawberry tree or evergreen dogwood from (where else) the Himalayas of China and India. Like the more "normal" native dogwoods of North America, cornus capitata flowers in late spring or early summer, but its flowers are a pale cream yellow rather than white and it generally doesn't lose its leaves in fall. The "strawberries" are edible but it's their size and color which are the main asset to the gardener - to birds and squirrels the dogwood's fall "bouquet" is more of a "buffet" so its fall color may be "out to lunch" before you know it. We've trained our plants as shrubs but they can become small trees 15 or 20' tall.

I said that the dahlias are all gone, but one type of dahlia is still holding on out in the back AARS rose garden (behind the "Bonica" rose). Until its flowers (which should be soon), the 10' tall tree dahlia, dahlia imperialis, looks more like some kind of bamboo. But the 4" to 5" wide flowers will (hopefully) be like purplish single dahlia. I say hopefully, because its late flowering habits put it in direct competition with late fall's wind, rain, and frost. So it needs a sheltered spot to be safe. Its size and flowers do make it a great conversation piece with a kind of "Jack in the beanstock" feel.

So, with the plants we've just discussed plus the fuschias, primroses and hydrangeas, there's still delights among the ditches. Please continue to look past (and excuse) our mess, because **Christmas is coming!!**

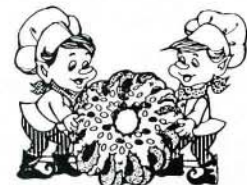
*George*



Christmas '88 will feature nearly three times the lights.

### GIANT COOKY BAKE DECEMBER 3rd & 10th

Sharon Fortune and Pearl Groves are again heading up the work parties to bake cookies for Christmas at Shore Acres. The cooky bakes will take place at Bangor School kitchen **Saturday, December 3 and December 10**, beginning at 10 a.m. each day. For more information, call Sharon at 756-3191 or 888-3173.





# CALENDAR

DECEMBER 1988

S	M	T	W	T	F	S
				1	2	3
4	5	6	7	8	9	10
11	12	13	14	15	16	17
18	19	20	21	22	23	24
25	26	27	28	29	30	31

**FoSA  
DAYS**

**HELP NEEDED TO  
STRING LIGHTS  
AND DECORATE**

Four outdoor Christmas trees go up Friday, December 2. The Friends need some strong people to help. Plan to be at the gardens by 9 a.m.

After the trees are up, we will proceed with stringing lights, etc. and continue the project Sat., December 3, and Sun., Dec. 4. All this work and fun will go from 9 a.m. to 5 p.m. each day. **And it will happen rain or shine!** For more information, call 756-5401 and leave a message. We will get back to you.



- Dec. 1, 2 & 4 "Best of Times" Dinner Theater - P.A.C.T. (7 pm, P.V. Lodge)
- Dec. 2, 3 & 4 Christmas display set-up (9 am - 5 pm each day)
- Dec. (Week-ends) "Oliver Twist" - P.A.C.T. (8 pm On Broadway Theater)
- Dec. 3 Christmas Flotilla (leaves C.B. Dock 5:45 pm)
- Dec. 3 The Oregon Symphony (8 pm, MHS) M.E.A.
- Dec. 3 Foxfire (8 pm, LTOB)
- Dec. 6 FoSA Board Meeting (7:30 - SWOCC)

- Dec. 8 "Night Before Christmas" by invitation Preview/Party for Volunteers (from 6 pm - 8 pm)
- Dec. 10 thru 30 "Christmas at Shore Acres" Open to the public (5 pm - 9 pm)
- Dec. 11 and 18 Christmas Boat Tour (11 am - 5 pm) Contact Bay Area Chamber of Commerce - 269-0215.
- Dec. 31 Christmas take-down work party (9 a.m. to 5 p.m.) Please come and help!!

## CHRISTMAS ENTERTAINMENT



## SCHEDULE (changes possible)

- December**
- 10 Community Band Ensemble  
SWOCC Southwesters
- 11 Coos Bay/North Bend Scouts
- 12 Sing-a-long with Mickey Myck & Irene Morgan
- 13 Sing-a-long with Myck & Morgan
- 14 Sing-a-long with Nadeen Lockett
- 15 Happy Hour with Nancy Givich & Henry Erickson
- 16 Kingsview Christian School Choir
- 17 Sing-a-long with Dennie Moreno & SDA Youth
- 18 Sing-a-long with Kotch Graham & Carolyn Regal
- 19 N.B. Presbyterian Church Choir  
Runeberg Dancers

- 20 Sing-a-long with Cymantha Burkle
- 21 Methodist Church Choir
- 22 Hauser Church Choir
- 23 "Celebration Group" from First Assembly of God North Bend
- 24 Del Cline
- 25 TBA
- 26 Tosca Means' "Guys"
- 27 Four Square Church Choir
- 28 TBA
- 29 Sing-a-long with Nadeen Lockett
- 30 TBA

Special Thanks to Della Gibbons  
Entertainment Coordinator

## JANUARY

S	M	T	W	T	F	S
1	2	3	4	5	6	7
8	9	10	11	12	13	14
15	16	17	18	19	20	21
22	23	24	25	26	27	28
29	30	31				

- Jan. 3 FoSA Board Meeting (7:30 - SWOCC)
- Jan. 19 Ore. "Governor's Challenge" Seafood Cook-Off IWA Hall - Opens 10 am
- Feb. 7 FoSA Board Meeting (7:30 - SWOCC)
- Feb. 24 "Intimate Voices" Concert (8 pm, Coos Art Museum)

## FEBRUARY

S	M	T	W	T	F	S
				1	2	3
4	5	6	7	8	9	10
11	12	13	14	15	16	17
18	19	20	21	22	23	24
25	26	27	28			



## SHORE ACRES AND FRIENDS

### PERMANENT UNDERGROUND WIRING INSTALLED AT THE GARDENS

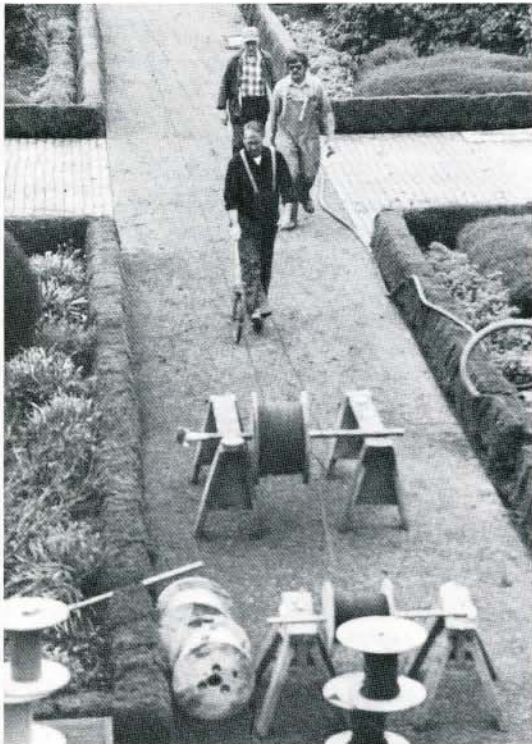
By the time you read this the wiring project at the gardens will nearly be completed and ready for the **Christmas lights** to be put up the week-end of **December 2, 3 and 4th.**

An energetic work force has managed this miracle. Following the plans engineered by Ed Riley and Tom Kyle, members of the Friends, park personnel, work release center volunteers, and members of the International Brotherhood of Electrical Workers (Dave West, Tom Stemmerman) worked diligently to install 15,000 feet of wire.

This will not only make stringing the 15,000 plus miniature lights for this year's Christmas event easier, it's also the first phase of an even more ambitious project - **nightscaping the gardens** with special garden lights.

None of this would have been possible without the generous contributions the Friends received during and since last year's Christmas at Shore Acres. The same level of support this year will help the Friends accomplish even more toward long term goals.

A big **thank-you** to all supporters!



Dave West measures a run of the nearly 3 miles of wire



Electricians Tom Stemmerman and Dave West (standing) look over wiring diagram designed by Ed Riley and Tom Kyle

### Park notes by Andy LaTomme



After reading Al's article about the Co-op Conference, any details I could add would be superfluous except to say that I am proud to have the Friends of Shore Acres in my district. As I compare what has been accomplished during the past year with what some of the more experienced groups have done, I am sort of awe struck. And to top it off, our new promotional slide show was one of the most talked about items of the conference.

If you haven't seen the new FoSA promotional program, give Shirley a call and arrange for a showing at your favorite organization, club or church group -- it's really a super show.

I don't know of another state park in the U.S. that is the subject of two Milton Bradley jigsaw puzzles. The second one went on sale last month (just in time to bring a copy to the conference). It features the dahlia beds with the garden house in the background. I think it will be about as tough to put together as the first one. It seems to be difficult to find locally, so while we were in Portland last week, Sue and I and the kids visited all of the Toys'R'Us and most of the Fred Meyer stores in the area and managed to come up with a limited supply of both the old and new puzzles. If you are interested in spending the long rainy nights to come with a real challenge, let me know, and you can have one for a modest contribution to the Friends.



## VOLUNTEERS AND FRIENDS

### FIRST STATEWIDE FRIENDS CONFERENCE A HUGE SUCCESS

by Al Aslakson

Take The Friends of Shore Acres and eight other friends groups from around Oregon. Add a generous portion of state park administrators, a few consultants and a couple of gift shop vendors. Stir in a huge amount of enthusiasm, a large dose of pride, and several hundred questions. Pour the mixture into the Silver Falls State Park Conference Center for two days, season with perfect weather, and garnish with food of outstanding quality and quantity. The result is the First Annual Oregon State Parks Cooperative Groups Conference, held October 21 and 22.

Representing The Friends of Shore Acres were President Shirley Bridgham and members David Bridgham, Billie Lowe Aslakson and Al Aslakson. Representing Shore Acres State Park were Andy LaTomme, District Manager and Gale Wolfe, Park Ranger. In all, there were 43 people participating in the conference.

It was an intense two days spent sharing ideas and learning from state officials and other groups. What did we learn?

\* "Friends groups represent the future of the Oregon State Parks System." - Dave Talbot, administrator of the Oregon State Parks and Recreation Division.

\* Nine friends groups in the state represent nearly 1500 members. The largest (Tryon Creek State Park) has 600, the smallest (Cape Blanco State Park) has 17. Shore Acres has about 145 members, making it fourth largest in the state.

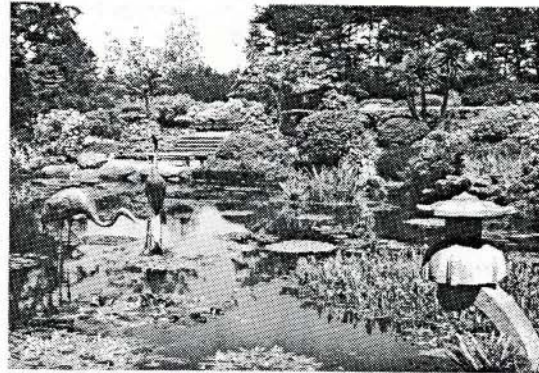
\* Friends groups are involved in everything from restoring lighthouses to staging outdoor pageants, from developing logging museums to creating educational programs.

\* Every Friends group either operates a gift shop as a fund raising activity, plans to open one in the near future, or wishes they had one.

\* The Gift Shop at Vista House on the Columbia River Gorge, operated by the Friends of Vista House, grosses \$150,000 a season, and is only open from May to October.

\* The Friends of Champoege State Park has the most ambitious funding plans (\$14 million), and hopes to develop their state park into a major attraction honoring the founding of Oregon.

### 1989 SHORE ACRES CALENDAR AVAILABLE



Created by photographer Tony Mason and graphic artist Phyllis Love, the calendar features a full color picture of the oriental pond with the full year shown on one 11"x 17" page. A great gift idea and it costs only \$2.50. You'll find the calendars at the Bay Area Chamber of Commerce office and at Harvest Book Shoppe in downtown Coos Bay. For more information, call Phyllis Love at 888-7230 or 267-3429.

\* The Friends of Shore Acres has the best audio-visual presentation and wins the "bright idea" award.

\* Workshops targeted the process of Planning for Organizational Success, Membership Recruiting and Involvement, Publicity and Marketing, and Events and Activities. Shore Acres President Shirley Bridgham was tapped to lead one of the Events and Activities Workshops.

\* How will this conference benefit our organization? It's impossible to list all the ideas that we "stole" from this group. For openers, you can expect to see new efforts to increase the involvement of all members, and some interesting educational projects. Specific recommendations will be developed and brought before the Board of Directors over the next several months.

Although the state legislature formalized the relationship between state parks and friends groups only two years ago, some groups have been functioning for much longer. Most groups, however, are relatively young. It is gratifying to see how much impact these groups have already had, and to anticipate how much difference we can all make in the future.

# FOSA MEMBERS

OUR MEMBERSHIP LIST HAS NEARLY TRIPLED SINCE THIS TIME LAST YEAR.

Keep telling **your friends** about **our Friends**.

## Benefactor

Coos Bay Emblem Club  
Ed Quinn

## Sponsor

- \* Edith Bowes  
David & Shirley Bridgham
- \* Joe & Rachel Henke  
Don & Nancy Landes  
Ann McMann  
William Moragne  
Bob & Margaret Perkins  
Nellie Ripper
- \* Ted & Carolyn Terry

## Patron

- Patricia Borchert  
David & Jean Bradford  
Foss/Whitty/Littlefield  
& McDaniel  
Gloria Geraths  
Don & Robin Harms
- \* Joan Hockaday
- \* Bob & Janet Huggins  
Carolyn & Breanna Kayate  
Mabel B. Lehl  
Frank & Mavis Rood
- \* John & Nancy Rulifson  
Frank & Donna Smith  
Tally Sperry  
Dean & Debbie Webb  
John & Teri Whitty

## Student

- Rose Slevoigh  
Jean Strehl
- \* Becky Watson

## Family

- Teri & Mark Albert  
Al & Billie Lowe Aslakson  
Bob & Wendy Howard Barber  
John & Dottie Bergen  
Mike & Monica Bishop  
Mike Bodkin  
Cindy Crawford
- \* Robert & Sandra Diedrich  
Ray & Rosella Duskin  
Marjorie Evans
- \* Chris & Donna Flammang  
Ellen Garner  
Jim & Sue Graeser  
James & Jean Hanna  
Dick & Nan Hansen  
Bill & Lois Harvey  
Ron & Bernice Hjort  
Joel & Shary Horning
- \* Joanne Jensen  
Wally & Monita Johnson  
Wineva Johnson  
Judy & John Knutson  
Ann & Tim Koppy  
Andy & Sue LaTomme  
Bill & Margaret McGuire  
A.J. & Cecile Moore  
Andy & Lynn Nasburg
- \* Gregg & Connie Nelson  
Elizabeth Olson  
Sarge & Crete Olson  
Mike & Robynn Reed
- \* Rex & Margaret Scott  
Eugene & Crystal Shoji  
Al & Ellen Stinchfield  
Richard & Irene Sund
- \* Lyn Topits  
Dorothy Vaughn
- \* Carol Ventgen & Mike Perkins

## Individual

- Pearl Affholter  
Marjorie Atherton  
Anna Mae Barnes  
Mitsue Deal  
Helen Doving  
George Guthrie  
Paul Huzefka  
Claire Kinman
  - \* Bill Lemoine  
Phyllis Love  
Virginia Maine  
Tony Mason  
John McKeown
  - \* Berta McNeff
  - \* Mildred L. Miller  
Doris Olsen
  - \* Nancy Price  
Irene Quick  
Alice Richter
  - \* Vi Siestream
  - \* Alfred T. Spence  
John Sweet  
Clare Wehrle  
Janet Wilson
  - \* Gale Wolfe  
Karen Wuethrich
- ## Senior
- Helen Barton
  - \* Geri Bork  
Cranson Fosburg  
Patricia H. Garner  
Karl Gehlert
  - \* Ruth M. Hoggatt  
Viola Lee  
Ward & Monica Robertson  
Molly Rudersdorf
  - \* Geneva Selin  
Dick & Jerrie VanNatta

\* New (since last newsletter)



## MEMBERSHIP

The Friends of Shore Acres is an incorporated, private non-profit organization with tax-exempt status. Its purpose is "to participate in interpretive, educational and physical development programs with Sunset Bay Park District".

### Board of Directors

Shirley Bridgham, President  
Dick Hansen, Vice-President  
George Guthrie, Sec./Treasurer  
John Bergen  
David Bridgham  
Tony Mason  
Nellie Ripper  
Al Aslakson  
Ann Koppy (Volunteer Coordinator)  
Newsletter Editors  
Shirley & David Bridgham

### Meeting Time

The Board meets the first Tuesday of the month at 7:30 p.m. From June through September the meetings are at the garden house at Shore Acres. From October through May they are held at SWOCC, Empire Hall, Rms. 102-103.

### Membership

An important part of any non-profit organization is its membership support base. Membership is the foundation for achieving our goals \*

- \* gift shop at the gardens with educational and interpretive items offered for sale
- \* plant identification markers and interpretive signs
- \* garden night-scaping with lights designed for that purpose
- \* guided garden walks
- \* interpretive materials for self-guided walks (coast trail, tide-pools)
- \* special annual events:  
Rhododendron Sunday (Mothers Day)  
Rose Sunday (Fathers Day)  
Christmas at Shore Acres



Membership categories for all levels of support are available. Membership runs from January 1st to December 31st.

Senior or Student	\$5
Individual	\$10
Family	\$15
Patron	\$25
Sponsor	\$50
Benefactor	\$100
Sustaining	\$250
Life Membership	\$500
Gift	

Members receive a membership card, window decals, quarterly newsletter, and 10% discount on Friends sales items.

In addition, memberships of "Sponsor" and above will receive special recognition from The Friends.

**\*\* Renewal notices will be sent in December. \*\***

### TO BECOME A MEMBER

Fill out the information listed below and return with your check or money order to:

The Friends of Shore Acres  
P.O. Box 1172  
Coos Bay, OR 97420

Name \_\_\_\_\_

Address \_\_\_\_\_

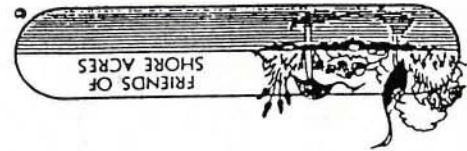
Phone \_\_\_\_\_  
home \_\_\_\_\_ work \_\_\_\_\_

For more information call:  
(503) 888-4902 or 888-3732

## Thank You

## Members and Volunteers !

Printer - South Coast Printing



NON-PROFIT ORG.  
U.S. POSTAGE  
PAID  
Coos Bay, OR  
97420  
Permit No. 305

The Friends of Shore Acres  
P.O. Box 1172  
Coos Bay OR 97420

# Christmas at Shore Acres

