



FRIENDS OF
SHORE ACRES



Volume 9, no. 1

Friends of Shore Acres Journal – Winter 1996

Founded 1986

Lights Draw 70,000 Visitors

More than 1300 volunteers and supporters contribute to effort

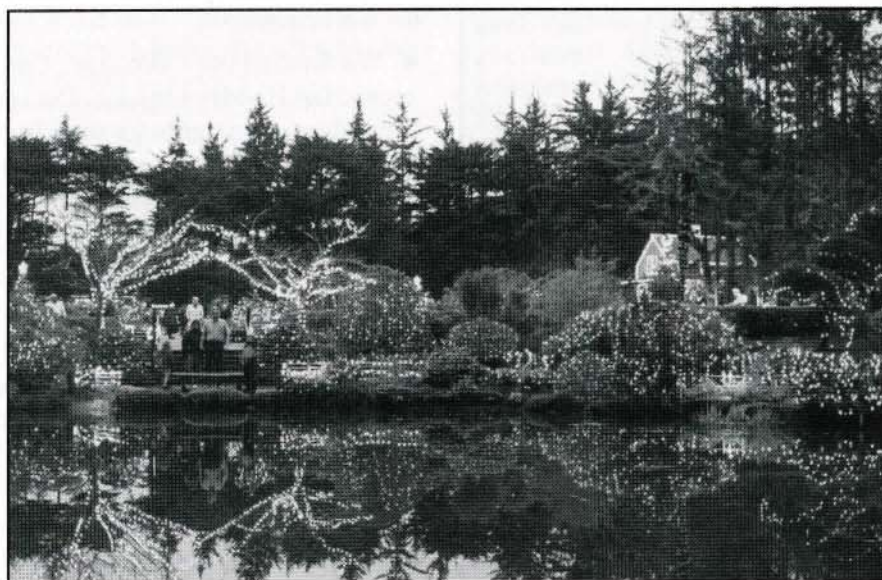
by Charlie Kocher, Board Member

An estimated 70,000 visitors enjoyed the twinkle of 150,000 lights in the gardens of Shore Acres State Park near Charleston over the holidays.

The visitor count for the ninth annual Holiday Lights display represented a record number, and was based on the number of vehicles entering the park between November 30 and January 1.

Plans are already being laid for this year's 10th annual display, which will feature even more lights, according to David and Shirley Bridgham, the Holiday Lights coordinators.

The record crowds were confirmed by the amount of hot spiced cider served during the month. Prepared to serve 714 gallons of cider, based on the previous year's consumption, volunteers had to



Jackie Schlaf

Early evening is a favorite time during the lights.

Visitor Profile

34 Countries—Australia to Zimbabwe
45 States—Alabama to Vermont
3 Territories—Washington D.C. to U.S. Virgin Islands
28 Oregon Counties—Baker to Yamhill
185 Oregon Cities/Towns—Agness to Yoncalla
160 California Cities/Towns—Ahwahnee to Yuba City
59 Washington Cities/Towns—Bellevue to Yelm.

cook up more than 1,100 gallons of cider for the crowds. At least 60 gallons of cider were poured in a single evening during mid-December.

The eight volunteers who make the concentrated cider spice mix are among more than 1300 volunteers who put up lights, decorated trees, baked thousands of cookies, greeted visitors, sang carols, poured cider, and then took down lights.

Visitors to the Holiday Lights display came from nearly every state in the union and more than two dozen nations abroad, according to signatures in the guest books. While some were one-time visitors, many guests returned time and again, often coming from cities that are several hours' drive from Charleston.

The record crowds came despite an unpleasant month for weather. More than 12 inches of rainfall were recorded in the Bay Area during December. In comparison, an estimated 67,000 visited the Holiday Lights display in December 1994. The display began with a mere 6,000 lights in December 1987. ❁

FRIENDS OF SHORE ACRES, INC.

Quarterly *Journal* published

Autumn, Winter, Spring, Summer

Editor – Shirley Bridgham

Photography – David Bridgham, Shirley

Bridgham, George Guthrie, Archi

Rosenthal, Jackie Schlaf, Bernard

Schlaf, Luis Velasquez

Officers

Dick Van Natta, President 269-5396

Doris Emmett, Past President 756-4450

Bob Renner, President-Elect 888-3364

Georganna Casey, Secretary 267-6061

Shirley Bridgham, Treasurer 756-5401

Directors

David Bridgham 756-5401

Bob Emmett 756-4450

Ellen Garner 888-3484

George Guthrie 888-2239

Jo Hower 269-1253

Charles Kocher 756-2688

Gerry Livingston 756-2688

Gregg Nelson 269-7978

Mary Novak 888-4088

Betty Renner 888-3364

Terry Richards 267-6211

Carl Siminow 888-2317

Information & Gift Center (IGC)

Volunteer Coordinator - Ellen Garner

Oregon Parks & Recreation Department

Area 4 Manager

Andy LaTomme – 269-9410

Area 4 Assistant Manager

Larry Becker – 888-3778

Shore Acres Landscape

Maintenance Superintendent

George Guthrie – 888-3732

Holidays Lights Coordinators

Co-Chair & Garden Lights

Shirley & David Bridgham – 756-5401

Outdoor Christmas Trees

Debbie Webb – 756-1988

Host Volunteers

Bonnie Koreiva – 267-4037

Cooky Bakes

Ella Mae Stuart

Printed on recycled paper,
using soy ink, by South
Coast Printing, Coos Bay,
Oregon



Editor's Notes

As I begin my ninth year as editor of this publication, I keep thinking about how much our organization has grown and how the *Journal* has evolved. Thanks to the generous support we get from Karen and Preston Clement, owners of South Coast Printing, we can include more photographs than you will see in most newsletters. We are blessed with some super photographers who generously donate their photos (see list in box at left).

- We are into a banner year as *Friends* – our 10th birthday and our 10th annual Holiday Lights and Open House. With your continued support this year will be better than ever!

- Many exciting activities are planned.

The Information and Gift Center is now open seven days a week from 11 a.m. to 4 p.m. (as of March 2). Park hosts are volunteering during the week, both in the Center and in the garden house showing the historical *Shore Acres Story* slide show. Ellen Garner's great volunteers take care of the weekends.

- We finished our video tape, *Gardens Above the Waves*, just before we opened the Holiday Lights in December. Many people bought tapes for themselves and as gifts for their friends and families. In the next issue of this *Journal*, I will tell you more about the video. In the meantime, pick up your copy at the gift shop. The video is only \$12.95 and it gives you a year long look at Shore Acres and its beautiful gardens.

- If you want to volunteer for any activities and you don't get called to help, please call President Dick Van Natta, 269-5396, Ellen Garner, 888-3484, or David and me, 756-5401.

- Speaking of help, I don't want to forget to thank everyone who helped take the lights down. Adam Reed, Robynn, & Mike Reed, Archi Rosenthal, Barbara Phillips, Peg, Dick, & Ben Monson, Betty & Bill Mault, Bill Breitmeyer, Bill Griffin, Bingo & Ginger Sawyer, Bob Renner, Brownie Ruggles, Bruce Phillips, Carol & Don Todd, Carol Ventgen, Charles Lembke, Charlie Kocher, David Bridgham, David Roth, Dick Sund & Irene, Dick Van Natta, Donna & Frank Smith, Elberta Smith, Evelyn & Jack Christian, Fred Ehrman, George Guthrie, Heidi Erickson, Ilene Sibold, Jan Wilkins, Jean Watson, Jean Johnson, Jeanne Allman, Keith Ott, Larry Casey, Louise Bowers, Luke Soules, Mary Kelley, Mike Perkins, Natalie Hansen, Patricia Williams, Shirley Champagne, and Sue Griffin.

Shirley Bridgham

WHAT'S COMING THIS SPRING, SUMMER AND FALL

☼ March 9 (Sat.) - *Daffodil Stroll*

☼ May 12 (Sun.) - *Mother's Day Rhododendron Sunday*

☼ June 16 (Sun.) - *Father's Day Rose Sunday*

☼ August 10 (Sat.) - *Fascination With Fuchsias*

☼ September 21 (Sat.) - *Dahlia Daze*

At each event, the Garden House is open from 11 a.m. to 4 p.m. and garden experts are on hand to answer your questions. Plus the Friends offer tasty refreshments. Come on out and enjoy yourselves! ☼



GARDENING HINTS AND TIPS

by George Guthrie, Head Gardener, Shore Acres Gardens

It's mid January at Shore Acres and as I write this the holidays are already the stuff of memories and next summer's flowers are still just a gleam in the gardener's eye.

Yes, holiday lights 1995 has shuffled off to join all the other "ghosts of Christmas past." The decorated trees that sprouted up so quickly in the lawn have magically disappeared and the thousands of lights that sparkled so brightly are already tucked in and boxed neatly away - no doubt already dreaming holiday displays yet to come.

On the other hand, as the lights and decorations take a well-deserved rest, out in the garden there are subtle stirrings as the earliest flowers start to wake up.

Believe it or not, the first crocuses are already trying to flower - trying unsuccessfully so far because marauding deer keep eating them so nothing much may come from their heroic efforts.

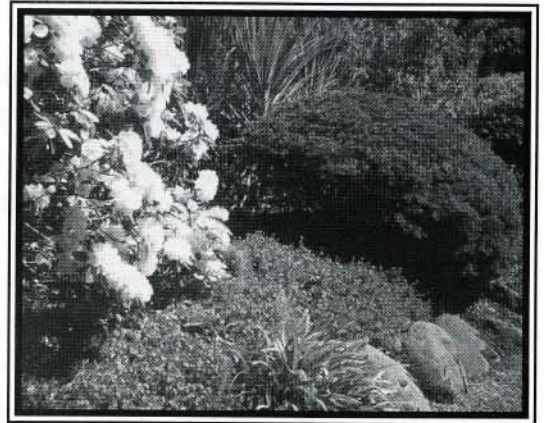
In the once and future dahlia beds tulips are pushing up in regimented rows of green shoots in brown bark, black earth, and - white moth crystals! The moth crystals are used to "stink out" the deer who would otherwise have a bulb buffet. Luckily the daffodils we've planted are less appealing so they should flower unmolested.

The roses are mostly bare sticks - thanks to weather and deer - but the various camellias we've planted are starting to bloom and their flowers mimic roses in size and shape if not in season. One of our earliest flowering varieties 'China Lady' has been flaunting her pink 'rosebuds' since around the holidays.

A walk through the garden will reveal all sorts of other goodies here and there - azaleas, viburnums, red-hot pokers, heathers, bottle brush that are already jostling each other as they 'wait in the wings for the curtain to go up, however slowly, on another spring at Shore Acres and Oregon's South Coast.

● **HELPFUL HINTS** - If you have rhodies and azaleas in your garden and you can brave the winter wind and rain, now is the time to start 'feeding' them.

There are special fertilizers just for rhodies that you can buy, but a lawn type fertilizer with a relatively high nitrogen content, i.e., a 20-10-10 (the first number represents the nitro content) or similar type that also contains so-called trace elements - especially iron, would be a great spring tonic. Just take a couple of handfuls and spread it around the



"Feed" rhodies and azaleas now.

plant. Avoid dumping too near the stem. Then let the winter rains do their work to wash the fertilizer into the ground.

● **TIP OF THE RANGER HAT** - We have received a generous financial donation from Dolly Shannon, her family and friends toward the construction of a new rose garden at Shore Acres. Coupled with lots of sweat equity (that means hard work) from Jay Dow and members of the South Western Oregon Rose Society, you're going to see some interesting developments this spring. More on this story in our next thrilling issue. Thanks also to Barbara and Randy Davidson of North Bend for a donation of gold fish to the Oriental Pond. ❀

Looking Back . . . to last autumn ❀ Dahlia Daze and Fall Walk

by Doris Emmett, Past President

Such loveliness! Such color! Such photo opportunities! That was the dahlia daze and beautiful fall walk on Sunday, September 24th at Shore State Park and Gardens. The dahlias and weather were at their best and it made for a sensational event in the last of our monthly series before the Holiday Lights event.

Displays in the Garden House by the Southern Oregon Dahlia Society were well received as visitors marveled at the variety and size and amazing colors of the blooms. There was even a bloom that had a sweet fragrance—unusual for dahlias. Many questions were answered by the Society as guests made queries about garden care and growth. Our great appreciation is extended to the members of the Dahlia Society and for their marvelous participation.

Friends of Shore Acres President, Dick Van Natta, Cappy Klein, and Bob and I served refreshments to nearly 300 guests, including lots of children, in the Garden House. Business in the Gift Shop was brisk, as it had been all summer. Dahlia Daze was most successful and enjoyed by all involved. ❀



IN THE KITCHENS OF NORTH BEND H.S., MARSHFIELD H.S. AND BLOSSOM GULCH SCHOOL

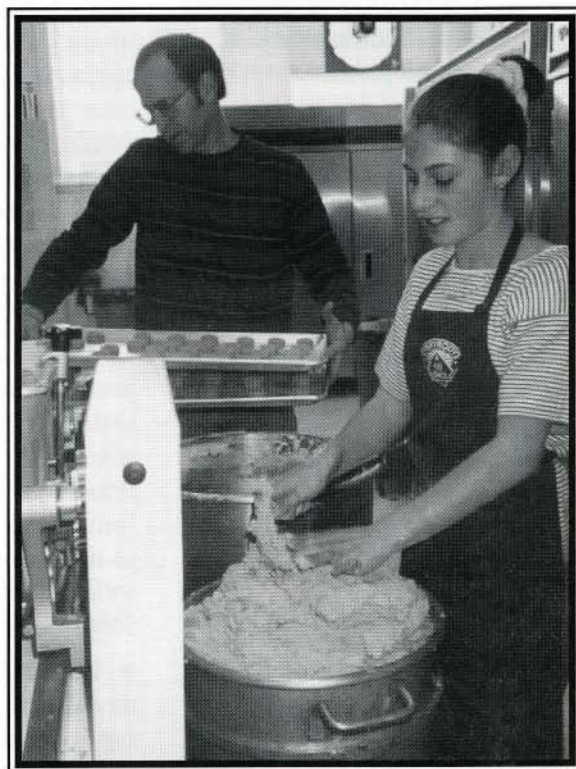
Cooky bakers baked cookies – 44,600 – on four weekends in October. They began their effort at Marshfield High School October 7, and completed the job at North Bend High School October 28.

Luis Velasquez took group pictures every weekend except the first one. Ella Mae Stuart, who chaired this gigantic effort, with the help of Dan Gordner at Marshfield, says everything went like clockwork.

Dan made arrangements for the bakers to use Marshfield's cooky machine and ovens and also the ovens at Blossom Gulch School. As a result Dan found himself transporting trays back and forth between the two locations.

This kind of support from the volunteers and the school districts is what makes our event a success. A huge thank-you to everyone who helped.

Ella Mae is already working on this year's arrangements; we hope all of you can help again! ☆



Food Service Director Dan Gordner and volunteer Alyssa Hall work the cooky machine at Marshfield High School.



(Left to right) Front row: Gail Wigler, Kristi Santivasci, Liann Why, Mesa English; Middle Row: Vera Fusano, Shirley Champagne, Alberta Esch, Shirley Shellabarger, Ann Toman, Ella Mae Stuart; Back row: Linda Gault, Pat Curtis, Vandy Vanderpool, Joe Pfeifer, Tim Drechsel, Jon Davis, Laura Yoshida



(Left to right) Sitting: Della Hunsaker, Grace Jensen, Leslie Cook, Ella Mae Stuart, Shirley Champagne, Pearl Groves; Standing: Joe Pfeifer, Kay Valois, Lois Winn, Gina Young, Vandy Vanderpool, Dan Gordner.

COOKY BAKERS BAKE 44,600 COOKIES! ☆ GREAT JOB!



Grace Jensen and Vandy Vanderpool



Lily Busick and Ella Mae Stuart

OTHERS WHO HELPED, BUT SOMEHOW

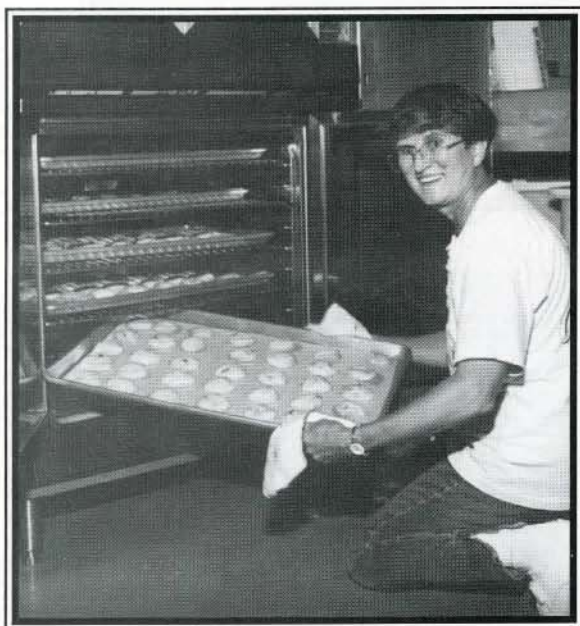
"ESCAPED PICTURES" - Angie McNeill, Barb

Phillips, Cappy Klein, Charlotte Skinner, Colin Wallace, Danielle Chantiny, Emma Hadden, Florrie Fox, Helen Doving, Imogene Chester, Jean Sorenson, Kathy Ludwig, Kelly Giddings, Kim Dolan, Laura Collins, Mary Pat Green, Rae Vinion, Sally Woodman, and Wanda Hanks. ☆

Special thanks to the McDonald Wholesale Co. and Wayne Kusserow for donating parchment paper for the cooky boxes and gloves.



Pearl Groves has helped baked cookies since 1988.



Shirley Champagne

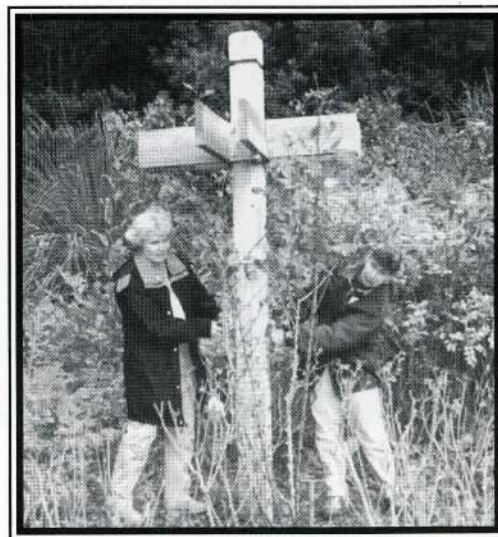


(Left to right) Front row: Robert Knudsen, Jessica French, Danielle Green, Denise Green, Johanna Bernstein, Joe Pfeifer; Middle Row: Linda Gault, Patty Curtis, Lois Winn, Jason Kiffe, Ella Mae Stuart, Lucy Varoujean, Jane Gigler; Back row: Debbie Taylor, Shirley Shellabarger, Eloise Wagoner, Helen Shefstad, Kate Gigler, and Jon Davis.

☆ Lights Pledge Supporters & Lights Stringers

Holiday Lights 1995 ☆ Lights Pledge Supporters

Abel & Swank Insurance Managers, Harry & Francie Abel, Jr.
 Benetti's Italian Restaurant
 Bert's RV, Bert & Nancy Wilson
 Best Western Holiday Motel, Tom & Pam Cottrell
 Bob's Appliance Sales & Service, Robert & Gayle DePeal
 BOS Telephone & Electronics, Inc.
 Cardinal Services Inc.
 Shirley Champagne
 Cheryn's Seafoods, Colleen Peterson
 City Subs, Bob & Gail Conwell
 Cone 9, Inc., Karen Blew & Staff
 Coos Bay Nissan Inc.
 Coos Bay Dairy Queen, Bill & Pat Morgan
 Coos Curry Federal Credit Union
 Coos Head Builders, Tom Graham
 Crow, Clay & Associates, Mike Crow & Steve Clay
 ESA Beta Delta
 Flash Photo
 Fraternal Order of Eagles, Coos Bay Aerie No. 538
 Fred Meyer, Melvin Burke
 Georgia Pacific Inc.
 Gold Coast Security
 Gold Coast Truck Repair, Butch & Jacque Shields
 Clare D. Gove C.P.A., PC
 Graham Oil Co., Inc.,
 Hargens Construction, Gary & Rody Hargens
 Hill & Hill Financial Services
 Honda World, Judy Gilbert
 The House of Myrtlewood, John & Tricia Shreck
 Bob & Janet Huggins
 John's Medicenter Pharmacy
 Kaffe 101, David & Cathy Herold
 Bob Laird & Paula Bechtold
 Jim & Alice Layport
 Dr. Lori Lemire
 Life Care Center of Coos Bay, Patrick Burke
 Lucky Loggers R.V. Park, Peter & Elle Lacques
 Maeyaert Financial Services, Inc., Dick & Sue Maeyaert
 Betsy & Walt McClure
 Menasha Corporation, Land & Timber Division
 The Mill Casino
 North Bend Chapel, Bill Sherwood
 North Point Real Estate & Development,
 Jack Fitzpatrick, James Berg, Ed Meyer
 Northwestern Mutual Life, Dick & Jan Vigue
 Pacific Mobile Services, Jack & Pam Chaney
 Pacific Power
 Paul's Pizzeria
 Bob & Margaret Perkins
 Red Lion Inn, Coos Bay
 Seaport R. V. Park
 Sunset Bay Golf Course, Larry & Rosalie Hyatt
 Taco Bell-North Bend/Coos Bay, John C. O'Donnell
 Thomas & Son Bev. Inc., Thomas Family
 Ticor Title Insurance Company
 Tioga Rooms & Apts.



Alice Richter and Archi Rosenthal create a candle in lights.



Brownie Ruggles (hat), Cappy Klein (left) and Martha Boring string lights on shrubs.



Betty and Kenn Kennedy are stuck on their job.

Holiday Lights 1995 ☆ Lights Pledge Supporters

Trading Post Art Gallery, Ted Bochtel

Utili-Check, Inc., Steve & Betty Golden

White, J.W. Painting & Construction, Jay & Melody White

Wood Products Credit Union

Lights & Electrical Support

Kyle Electric, Tom Kyle

Farr's True-Value Hardware, Jay Farr

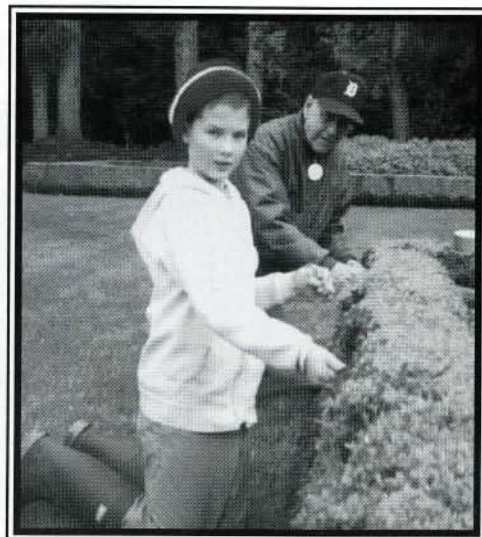
Marvin Blenz

Forsyth Decoration Display-Dick, Rich & Karol Vezzani

Lights Repair

Ken Kocher, Clackamas

*Ken Kocher is
already hard
at work fixing
lights for
1996!*



Bill Breitmeyer and his grandson Luke Soules have lots of experience stringing hedges.

LIGHT STRINGERS - GARDEN, TREES, SCULPTURES . . .

Adam Reed	Erika Nelson	Martha Boring
Alice Richter	Ethel Ferris	Matt Van Ess
Allison Solarz	Frank Kocsis	Maxine Johannesen
Amie Campina	Frank Smtih	Megan Miller
Ann Mintonye	Fred Ehrman	Mike Graybill
Archi Rosenthal	G.D. Holmes	Mike Harder
Atsue Fujii	Genie Gannon	Mike Perkins
Barb Phillips	George Guthrie	Mike Reed
Barbara Flynn	Ginger Sawyer	Miranda Stout
Bernie	Gregg Nelson	Nancy Neeson
Betty Kennedy	Hank Parrott	Natalie Hansen
Betty Mault	Irene Sund	Pam Dalton
Betty Renner	Jack Porter	Pam Fields
Bev Beath	Jami Bridgham	Patricia Williams
Bill Breitmeyer	Jan Hodder	Peggy Scheideman
Bill Mault	Jan Peterson	Rhea Cheslock
Bingo Sawyer	Jane Bacchieri	Rhonda Starelli
Bob Golden	Janet Vos	Richard Purcell
Bob Renner	Jay Dow	Robin Hughes
Bob Valois	Jean Stuck	Robynn Reed
Brownie Ruggles	Jeanne Curreton	Roger Collins
Bruce Phillips	Jeannie Conklin	Ron Lecce
Cappy Klein	Jeff Common	Ron Smith
Carl Siminow	Jim Cheslock	Sally Damewood
Carol Ventgen	Joe Henry	Sara Coffey
Charles Lembke	Jon Eck	Scott Pan
Clark Van Natta	Joy Dow	Shirley Bridgham
Claudia Smith	Juanita Roberts	Shirley Champagne
Connie Nelson	Julie Collatt	Steve Dalton
Cory Miller	Justin Stuck	Steve Rice
Craig Cornu	Karlyon Samuels	Steve Rumrill
David Bridgham	Kathie Lecce	Terisa Hatch
David Roth	Kay Groth	Tina Eck
David Smith	Keith Ott	Tina Stuck
Debbie Webb	Kenn Kennedy	Tom Gaskill
Dick Scott	Kent Ferris	Tom Peterson
Dick Sund	Larry Casey	Tom Scheideman Jr.
Dick Van Natta	Lauran Davidson	Travis Nelson
Donna Smith	Lindsay Slechta	
Doug Beath	Lois Seaman	
Elaine Smith	Luke Soules	
Eric Hulce	Maegan Lindsay	

*Thanks,
everyone!*

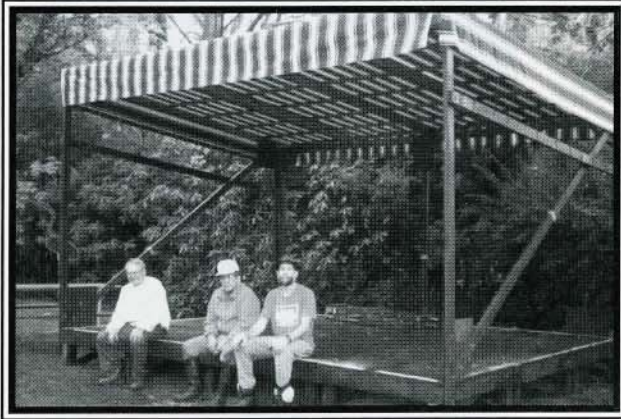


Ginger and Bingo Sawyer light shrubs.



Travis, Erika, and Connie Nelson.

NEW STAGE, NEW LOCATION - GOOD MOVE, GREAT ENTERTAINMENT!



Keith Ott, Frank Smith and Joe Neill take a well-deserved rest after building the new stage.



Kids and adults entertained. Everybody seemed to like the new stage in its new location near the Garden House.



Golly the Clown on Christmas Eve.

We debated – we considered – we asked Larry Becker, Assistant Manager Area 4 - “How can we improve the location of the stage? May we move it closer to the Garden House?” Larry was more than accommodating. Not only did he agree the stage should be moved, he decided to provide a covering for the grass to keep folks out of the wet grass. Next we contacted The Fabric Mill to see what kind of cover we could get. Sharen Kibby and David Warner were quite helpful and gave the Friends a very good discount on a new awning. When it came time to put the stage up, George Guthrie and park staff moved the stage modules into place. Keith Ott and Frank Smith designed a frame and with the help of Joe Neill put it up. It was quite a job. Our original idea was to keep the dampness off of the singers, players, and performers. We didn’t think about 12 inches of rain! Needless to say, this year, the awning will be water-proofed! Even so, it was a great improvement for those who entertained; we just hope to make it better. ☆

Our profound thanks to the entertainers -

Bay Area Community Band
 Bay Area Four Square Church
 Bay Area Hospital Carolers
 Brownie Troop #97 NB
 Campfire Boys & Girls
 Charleston Community Church
 Crusader High School Choir (NB)
 Golly the Clown
 Hammy the Clown
 Kim & Kevin Paulson (guitar & violin)
 North Bend Elementary Choir
 NBHS Jazz Choir
 North Bend Presbyterian Church Choir
 St. Monica’s Madrigal Choir
 Sweet Adelines
 Shutters Creek Carolers
 SWOCC’s “Beacon” performers

Junior Lab Band

Alto Sax - Craig Riley, Brett Howard, Kathy Rogers, Larry Krieser, Brett Polama, Zach Axleton, Erica Nelson;
 Tenor Sax - Mandy Knowleton, Elizabeth Watson; Trombone - Ed Newstead, Tim Petrone, Kyle Riley; Trumpet - Nick Lovell, Jake Pewitt, Justin Partney, Amber Howe, Sean McCarrin, Kevin Isley;
 Rhythm - Coral Beckstrom (piano), Allie Jantzen (piano), Jason Jantzen (bass), Ken Isley (drums)

A very special letter -

from Shutter Creek Choir, Shutter Creek Correctional Institution
 December 18, 1995

Dear Friends,

Thank you very much for having us entertain yesterday evening. Those of us who were there last year were amazed that you actually improved the lights. It was a feast for the eyes!

Prisoners are rarely given the opportunity to contribute to our community. Thank you for making this possible for us in addition to providing us a most enjoyable evening. We hope you will invite us to entertain you again next year and look forward to seeing you then.

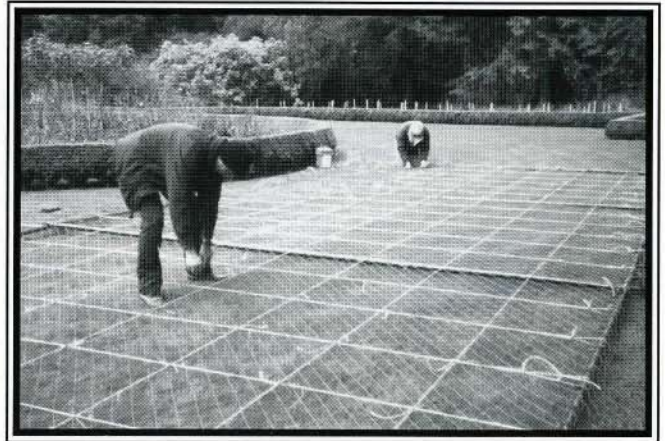
Sincerely yours,

The Shutter Creek Choir

CROWDS "LOVE" THE NEW *LEAPING ORCA WHALE*



Bob Renner, David Bridgham, and Fred Ehrman stretch the fishing net.



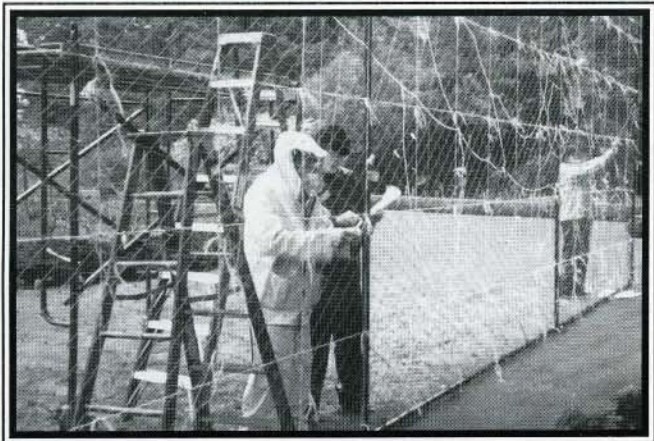
Fred Ehrman helps David stretch the grid on the net.

WHALE TALK - THE REST OF THE STORY

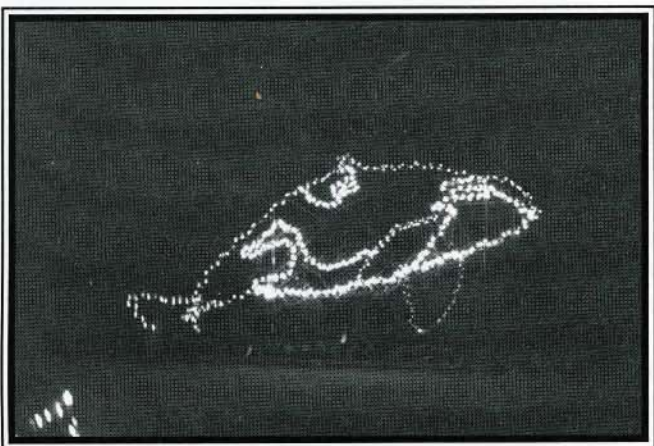
David was sure Don McMichael could design an Orca whale sculpture leaping in five stages. He was right. Just like last year, Don came through again. And with a lot of help from Industrial Services' fabrication crew, Industrial Steel's truck to haul it, and Don Thompson Construction's scaffold to put it up, this year's new attraction became a reality. Of course it took a few more people to string lights on it - namely Carl Siminow, Connie Nelson, David Bridgham, Dick Scott, Frank Smith, Fred Ehrman, Gregg Nelson, Keith Ott, and Mike Perkins. Then someone had to make it leap. . . naturally our resident electrician Tom Kyle said, "no problem." We held our breath, but like always Tom was right - no problem! *Thanks to all who worked so hard on this project.* ☆

Gray Whale's New Spout

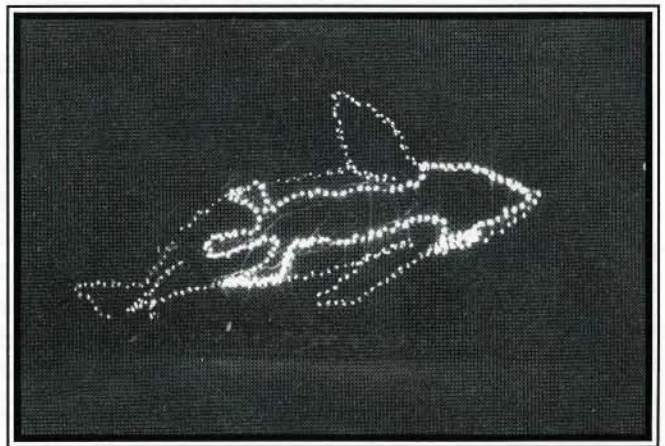
Bob Valois, Connie Nelson, David Bridgham, Erika Nelson, Gregg Nelson, Keith Ott, Kyle Electric, Mike Perkins, Roger Collins, and Travis Nelson. ☆



Checking the plan.

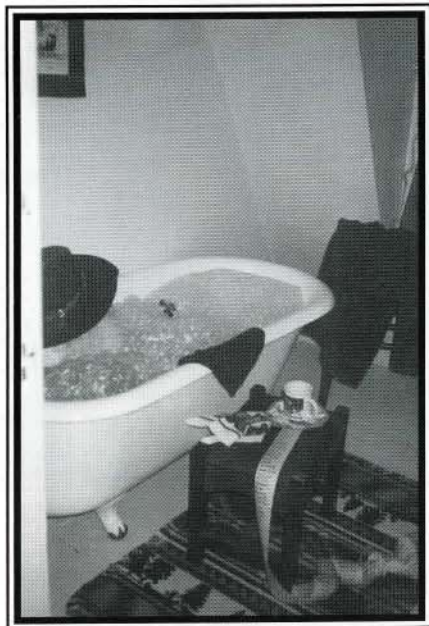


Giant Orca leaps . . .



. . . and turns - before splashing.

"Home on the Range" at the Garden House



Cowboy Santa takes a *bath*.

The Coos County Mounted Sheriff's Posse Auxiliary house committee, chaired by Peggy and Dick Monson, spent months creating ornaments and decorations for the Garden House theme - *Home on the Range*.

When it was time to decorate the house, Carol and Don Todd (1994 co-chair) and Carl Siminow helped put up miniature lights and garland. Keith Ott and Carl also ran new wire for a permanent stereo system. Other decorators included Barbara Bernhisel, Denton Watson, Elberta Smith, Evelyn Christian, Heide Erickson, Ilene Sibold, Jack Christian, Jean Watson, Joanie Johnson, Joyce Wilkins, Lauren Osterhout, Louise Bowers, Mary Kelley, Mellissa Berg, Nikki Johnson, Patti Kunz, Peggy Monson, Starr Cotton Sue Griffin, and Tom Sibold. Milton and ElsieMae Casey of Casey Saddlery loaned a saddle for the display. Thanks everyone, for all your hard work. It was beautiful! ☆



Ilene Sibold in upstairs front bedroom.

Holiday Trees ☆ as varied as their decorators



Elks Lodge #160 tree decorators Frank Smith, Steve & Pam Dalton, Ron & Ekaine Smith, Rhea & Jim Cheslock.

This year's outdoor trees, courtesy of Bob Laport and Coos County Forestry, were beautiful. Lance Morgan, Glenn Sears, and Rick Rabey chose grand fir trees that were just the right size for the gardens. Debbie Webb, chair of outdoor tree decorating, and the organizations and businesses that were lucky in getting a tree to decorate, did a great job making each tree unique. Trees were decorated by Bay Area Hospital, BLM & the Umpqua Discovery Center, Coos Bay Post Office, Elks Lodge #160, Marshfield High School Key Club, Pacific Power, and South Slough Reserve. The Coos County Jail Inmates under the direction of Gordon Ogden, helped Debbie decorate the *Friends'* tree. A big thanks goes to Coos Head Builders, Tom Graham, and Fred Gonzales for delivering the trees and to everyone who helped. ☆

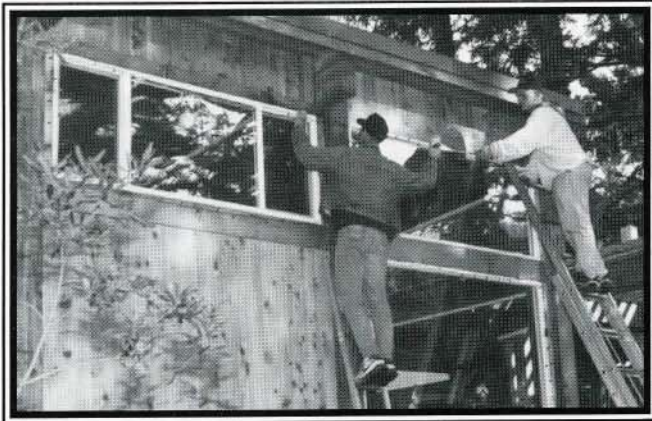


Debbie Webb gets ready to decorate.

FIRE AND RESCUE VOLUNTEERS "LIGHT" THE HIGH PLACES AND ROTARIANS AND FRIENDS "LIGHT" THE ORIENTAL GARDEN



Lights on the House



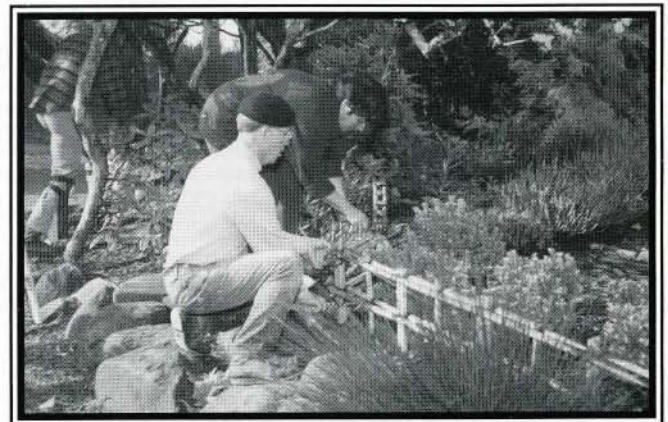
Lights on the Gift Shop



CB/NB Rotary President Norm Hill strings lights on the plum tree near the entrance to the pond.



(Left to right) *Coos Bay*: Miranda Stout, Mike Harder, Steve Schneiderman, Jon Eck, Tina Eck; *North Bend*: Joe Henry, Jonathon Henry, Hank Parrott, Jeff Common, Eric Hulse (not pictured Jean and Justin Stuck)



Rotarians Al Henrickson and Kathy Rosencrantz string tiny white lights on bamboo fences while Joe Neill gets ready to string lights on a tree.

*Thanks,
everyone!*

ORIENTAL POND AND GARDEN

Coos Bay North Bend Rotary Club and the Bay Area Rotary Club - Dennis Bosso, Alan Henrickson, Bob Scully, Buz Sobel, Charlie Zipprodt, David Bridgham, Davis S. Smith, Gordon Ogden & 7 Coos County Residents - John Parmalee, Harry Davis, Janet Holmes, Joe Neill, John Goodwin & Boys, Jose Aguilar, Kathy Rosencrantz, Lee Stallings, Neil Dorst, Norm Hill, Randy Welborn, Ray Ronk, Roger Fetty, Russell & Alexander Clark, Steve Carpenter, and Suzanne Marchant.

ORIENTAL GARDEN DRY LANDSCAPE

Archi Rosenthal and George Guthrie

Hosts, hot cider, and more thanks. . .



Laura Lee Blenz greets visitors on Zonta's night to host, December 16.

Hosting takes many volunteers each night. We are blessed every year with so many who are willing to brew spice, cook and serve cider, make punch and serve cookies. So many willing volunteers who welcome our visitors, answer their questions and really roll out the red carpet of south coast hospitality. We thank you all!

Doris Emmett's "spice" committee brewed the spice base for the hot apple cider in the kitchen of the North Bend Presbyterian Church in November. Her helpers were Charlotte Skinner, Helen McElravey, Jo Hower, Marie Heisen, and Winnie Pitsenberger.

Like the cookies and apple juice, the spice was frozen and stored at Vend West Services, courtesy of owner Lou Leberti. Lou is the one who delivers our supplies to Shore Acres throughout the holiday season.

Abel & Swank Ins.

Ann Marie Martin
Ann Vandervelden
Anna Carder
Bob Sneddon
Brian Sullivan
Carroll Sederlin
Chester King
Clara Anderson-Kuhn
Colleen Sederlin
David Eubank
David Vandervelden
Irene Aspinall
Jana Metzler
Kady Sneddon
Leslie Herrold
Margo Sullivan
Melanie Eubank
Ray Aspinall
Sharon Baldwin
Theresa Anderson

American Business Women's Assoc.

Barbara Foord
Belva Mai
Beverly Owen
Dannia Ericksen
Fran Capehart
Jackie Arnold
Kathy Little
Laura Eschler
Marian Martin
Robyn Greenlund
Sue Christiansen
Teddi Kern
Terry Mai
Vicki Cook

Bay Area Hospital Community Activities Team

Bonnie Baron
Dan Smith
Debra Grabowski
Janet Vos
Jerry Warbis
Julie Collatt
Karl Delzotti
Nancy Neeson
Pam Tofflemire

Rhonda Starelli
Rita Meza
Sannie Warbis

Bay Area Rotary

Becki Riensche
Becky Andrews
Beve Saukko
Bob Petersen
Carolyn Tecube
Craig Finley
Denny Schmidt
Ed Meyers
Gail Freeman
James Donnelly
Judy Weeks
Kay Mills
Mike Riensche
Paula Dow
Richard Tecube
Susan Kylo
Suzanne Marchant
Vicki Jenkins

Beta Sigma Phi

Clara Robinson
Dotti Orazem
Doug Graham
Gary Robinson
Gary Snelgrove
John Thompson
Kay Snelgrove
Leona Graham
Loyel Arrant
Margie Russell
Michael Patterson
Ray Orazem
Rose Stutesman
Sharon Arrant
Sharon Thompson
Vi Williamson

Boy Scout Troop #156

Aaron Robertson
Blaise Buckbee
Craig Riley
David Stentz
Jared Potter
Jay Schaefer
Jeremy Eastwood
Jeris Schaefer

Jesse Schaefer

John Harsh
Kyle Riley
Luke McAndrew
Matthew McAndrew
Nola Riley
Pat Schaefer
Tom Wuethrich

Coast Guard Enlisted Spouses

Eveline Kown
Jessica White
Kristy Smith
Lora Merrill
Lore Wills
Lori Stykel
Marcie Harder
Terri San Nicolas

Coos Bay North Bend Rotary Club

Alan Henrickson
Crystal Shoji
David Bridgham
Debra Schulz
Heidi Erickson
Jane Henrickson
Jim Kornbau
Judy Parker
Justin Sims
Kay Heikkila
Louis Liberante
Margaret Ronk
Paul Heikkila
Ray Ronk
Rita Kornbau
Roger Dixon
Roger Sims
Shirley Bridgham

Coos Bay Yacht Club

Beth Carnahan
Betty White
Bill Carnahan
Bonnie Morgan
Carol Miller
Claudia Moore
Craig Main
Dave Laird
David Morgan

Dean Webb
Debbie Webb
Donna Tracy
Jackie Cortez
Jim Moore
Joe Cortez
Ken Tracy
Mike Miller
Patricia Sweet
Paul White
Ron Wardman
Sam Roth
Shari Main
Terrye Laird
Toni Wardman

Coos County Mounted Sheriffs Posse Auxiliary

Candi Munroe
Cathie Griffin
Clarence Smith
Dawne Munroe
Denton Watson
Elberta Smith
Evelyn Christian
Heidi Erickson
Ilene Sibold
Jack Christian
Jean Watson
Joanie Johnson
Joyce Wilkins
Louise Bowers
Marsha Foote
Marsha Foote
Mary Kelley
Paula Douglas
Roxene Lockhart
Sharyn Clark
Starr Cotton
Steve Wilkins
Vicki Greene
Vicki Munroe
Vicky Farrens
Wes Bowers

Coquille High School Key Club

Dianna Jonsson
Jacalyn Pinkston
Jessica Shine-Bewley

Jessica Thaxton
Jordan Raymer
K. Shine-Bewley
Kelly Guerin
Miah Stokes
Michelle Delvin
Monica Sisson
Pippa Wopfner
Sabrina Lewis

Friends of Friends

Babe Beauchemin
Ben Titus
Billy Daniel
Delia Daniel
Helen Fitzpatrick
Jim Fitzpatrick
Pat Titus
Rhoda Beauchemin

Friends of Friends

Charlie Simpson
Della Gibbens
Jeffery Short
Dorothy Phau
Jim Crooker
Liz Hubler
Loretta Cole
Lyn Lender
Pearl Affholter
Rita Crooker
Sean Hubler
Wayne Phau

Friends of Friends

Jay Dow
Roger Collin
Laura Collins
David Bridgham
Shirley Bridgham
Bingo Sawyer
Ginger Sawyer
Shirley Schneiderman
Jack Schneiderman

Friends of Friends

Alan Koreiva
Bob Emmett
Bonnie Koreiva
David Bridgham
Doris Emmett

Helen Shefstad
Randy Johnson
Shirley Bridgham
Sonny Shefstad
Stuart Koreiva
Sue Koreiva

Friends and Friends of Friends

Andrea Sharman
Charlie Kocher
Connie Nelson
Dottie Orazem
Ed Shepard
Eric Beechly
Erika Nelson
Gregg Nelson
Katie Davis
Kent Sharman
Larry Mangan
Lee Douthit
Linnæ Beechly
Neal Middlebrook
Ray Orazem
Shawn Spooner
Steve Spooner
Susan Middlebrook
Sylvia Mangan
Terry Shepard
Travis Nelson
Yvonne Spooner

Friends of Friends

Beverly
Bingo Sawyer
Bob Jumper
Bonnie Koreiva
Charlie Kocher
Dawn Schechtel
Ginger Sawyer
Kate Jumper
Liz Huebler

Friends of Friends

David Bridgham
Debra Taylor
Ginger Sawyer
Helen Shefstad
Karen Wuethrich
Sonny Shefstad

Friends of Shore Acres Board

Betty Renner
Bob Renner
David Bridgham
Dick Van Natta
Ellen Garner
Georganna Casey
Gregg Nelson
Mary Novak
Shirley Bridgham
Terry Richards

Harley Owners Group

George McGrath
George Woolcock
Jade Larson
Jennifer Sauter
Jerri Statham
Larry Martinez
Lorie Dub
Mary Ann Dub
Mike Statham
Neal Langbehn
Paul Bassett
Peggy McGrath
Sandie Martinez
Terry Fisher
Tony Dub

Life Care Center

Anita Merritt
Bill Gruschow
Bill Gruschow
Carla Brooks
Cindy Stager
Georgia Sandquist
Helen Patterson
Helen Pederson
Lissa Dishner
Liz Miles
Loretta Reiman
Marie Harbin
Patrick Burke
Patty Buford
Raydean Gasset
Sandra Shoup
Vicki Williams



Hosts, apple juice, punch, and more thanks. . .

When our hosts arrive at the garden house, they get their holiday button—Judy and Al Aslakson made 900 this year—and they find the house ready for visitors. Our “house openers” this year were Brownie Ruggles, Cappy Klein, Dick and Irene Sund, Ginger Sawyer, Kay Groth, Martha Boring and Maxine Johannesen.

Ocean Spray Cranberries and Dennis Chesselet donated 12 cases of cranberry concentrate for the punch. The concentrate is combined with a punch mix made by Adam, Robynn, and Mike Reed.

Fred Meyer, Coos Bay, and Terry Pyle donated 50 cases of apple juice and gave us a substantial discount on the 50 cases we bought. With 70,000 visitors, the hosts served thousands of cups of cider!

We are truly thankful for the generous support we get for our “community tradition.” ☆



Lou Leberti picks up apple juice at Fred Meyer. The store donated 50 cases this year.

Lunch Bunch
Bonnie Koreiva
Chet Haliski
Helen Gray
Kay Lorence
Virginia Paczesniak

Menasha Land & Timber Division

Barbara Bauder
Cheri Goude
Donna Cochran
Frank Lyon
Janice Lyon
Lisa Bentley
Nancy Dooley
Pat Hoesly
Rick Merizon
Roger Goude
Tom Dooley
Tom Hoesly

MHS Class of '40 & Friends

Don Matson
Don Rasmussen
Doyle Payne
Elfrida Prefontaine
Elvina Caderette
Elsamae Casey
Evan Bone
Florence Smith
Helen Doving
Ida Mae Bone
Leslie Choat
Pat Matson
Red Sigsby
Seena Sigsby
Vera Breuer

Mid Coast Mustang Club

Amanda Carter
Bill Velano Jr.
Bob Carter
Brian Carter
Carol Salisbury
Corky Tressler
Dick Morana
Dorothy Morana
Hank Fryer

Jerri Bastou
Laurie Burke
Linda Gowey
Nick Salisbury
Patricia Chard
Patti Freyer
Patti Baxter
Patty Chard
Rich Baxter
Steven Chard
Tim Salisbury
Virginia Carter

Miss Coos County Scholarship Pageant Board

Belva Mai
Don McNutt
Erin Gould
Kathleen McNutt
Kathy Freeman
Maegan Golden
Mary Lou Munyon
Maureen Everetts
Michelle Brown
Nola Zanni
Susan McDaniel
Tara Mahon
Terry Mai
Thomas Munyon
Travis Kennedy
Vera Bruer

North Bend Education Assoc.

Allyson McNeill
Angela Boling
Angie McNeill
Anika Bond
Bobbi Black
Claudi Slack
Dino Coolen
Eloise Wagoner
Fair Sobel
John Calhoun
Judy Schneiderman
June Littlefield
Karen Hatfield
Kate Sharples
Kirk Patrick

Laurie Aley
LaVonne Knapp
Lee Littlefield
Liz Curtis
Mary Jo Jamsgard
Nancy Bryant
Peg Lemoine
Peggy Scheideman
Peter Littlefield
Rick Curtis
Ruth Ann Melton
Teri Bond
Terri Bond
Thomas Leslie
Tom Scheideman
Virginia Nolan
Virginia Roush

North Bend Medical Center

Amber Loving
Amy Dye
Amy Henson
Aurora Watson
Carlene Selander
Christine Loving
Darrin Muir
Diane Aley
Ed & Gayle Troyer
Fran Holland
Gerry Livingston
Helen Coughlin
Joni Kay Muir
Jodie Watson
Judy Lockman
Julie Lebow
Kathy Bowen
Kelly Coughlin
Ken ?
Nick Watson
Sue Dannenbrock
Summer Loving

North Pacific Security

Alice Stover
Ben Brown
Carol Stover
Doug Stover
Gene Clark
Jamie Simmons
Kerrie Mitchell

Laura Clark
Penny Brown
Steve Mitchell
Tami Stover

Occidental Chapter #45

Eastern Star
Connie Janis
Dorothy Hull
Everett Lathrom
Harry Loughheed
Jessie Richert
Jim Shively
Lee Roy Lathrom
Lola Lathrom
Lorna Shively
Marianne Catlett
Olive Loughheed
Phyllis Steele

Soroptimist Intl. of Coos Bay

Bob Perkins
Connie Nitschke
Denny Strine
Diane Verger
Dick Vigie
Eldon Nitschke
Genevra Wall
George Oliva
Jan Vigie
Joe Nowlin
Karen Wall
Leslie Generra
Linda Strine
Marcia Oliva
Margaret Perkins
Patricia Redmond
Rob Generra
Shawn Wells

South Coast Business Employment Corp.

Ann Bice
Clyde Bice
David Aakre
Katelyn Johnson
Linda Chambers
Maureen Aakre
Melinda Johnson

Paula Beers
Penne' Wagner
Roy Wagner

South Coast Cruisers Car Club

Art Cordell
Becky Stern
Ben Bennett
Cari Morana
David Steele
Dick Morana
Dorothy Sherri
Dorothy Morana
Fran Dalton
Gary Dalton
Gloria VanSlyke
Mona Oyster
Omer Oyster
Patty Moyneux
Pete Paradies
Rob VanSlyke
Theresa Mason

Southwestern Oregon

Rose Society
Duane Horner
Ed Kreutzer
Frances Menegat
Jan Kelly
Jay Dow
John Menegat
Joy Dow
Mary Anne Kreutzer
Maxine Johannesen
Mike Kelly
Nancy Pennington
Ray Duskin
Sally Horner
Sheryl Stephens
Steve Pennington
Verna Day
Walter Riley

Southwestern Oregon

Street Rods
Alta Wilson
Cheri Volin
Connie Jean Bradley
Cy White

Dean Lounsbury
Harry Wilson
Jan Hooper
Joyce Lattin
Mike Pothoff
Mike Slagle
Nathan King
Steve Hooper
Tom Volin
Trish White

S.W.O.Y.A.

Bill Otton
Butch Hutchinson
Jan Cunningham
Jean Walker
Kathy Hutchinson
Leslie Davis
Lee Roy Walker
Rod Barnts
Shaun Kohn

Umpqua Discovery Center

Claire Lynes
Dave Harris
Eddy Warner
Marcia Bell
Newman Case
Portia Harris
Tom Lynes
Valerie Smart

United Way of SW Oregon

Allen Rumbaugh
Bill Murray
Chris Claflin
Helen Mineau
Jane Olbekson
John Barney
Judy Herron
Lorna Barney
Lynda Claflin
Marshall Herron
Patty Rumbaugh
Rick Mineau
Susie Barney
Veronica Elbert

White Shrine of Jerusalem

Alan Kelsay
Debbie Kelsay
Dorothea Yantis
Francine Kelsay
Guy Kelsay
Ivan Kelsay
Lee Roy Lathrom
Lola Lathrom
Robert Yantis
Ron Kelsay
Sheri Kelsay
Treva Brown

XI Gamma Omega

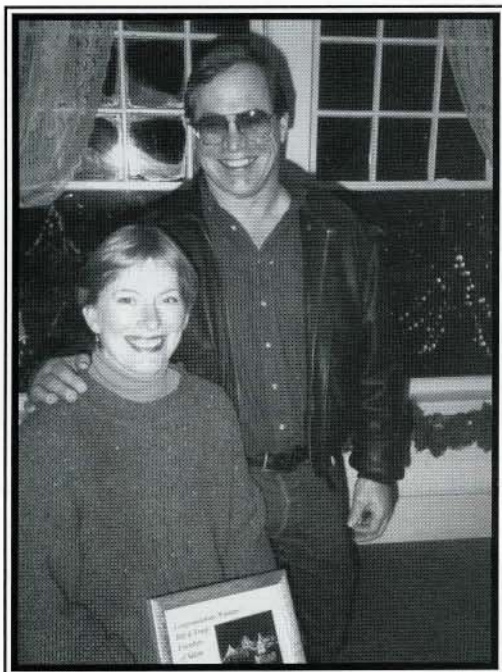
Jodi Hill
Kristina Hawkins
Lynda Sanders
Michelle Schuler
Pat Morgan
Peggie Gulseth
Raquel Wood

Zonta Club of the Coos Bay Area

Bill Borchert
Carol Clayburn
Carol Ventgen
David Bridgman
Deloras Duringer
Donna Smith
Frank Smith
Frank Duringer
Kareen LaValley
Laura Lee Blenz
Linda Clem
Linda Ridings
Marvin Blenz
Mike Perkins
Missie Yost
Patty Borchert
Paula Bechtold
Sheila Ward
Shirley Bridgman
Steve Clayburn
Terri Turi
Verena Matthews



B & B Winners



Bill and Trudy Eisenbeis win B&B.

January 1, 1996 - "Thank you very much for the wonderful stay New Year's Eve. A great start to a new year." Bill & Trudy Eisenbeis, Salem



Bill and Trudy started off the new year with a tasty breakfast prepared and served by Kaarina and David Scolari.

Holiday Lights visitors say it best ☆

Absolutely breathtaking! – Cottage Grove
 Christmas Lights are spectacular! – Baltimore, MD
 Like nothing I've seen before! – Zimbabwe, Africa Better than Butchart!
 Very creative! – Hildale, Utah
 The most wonderful Christmas display I've ever seen! – San Diego
 Absolutely gorgeous and well worth the trip! – Sherwood
 Powerful and illuminating – Fayetteville, NC
 Why go to Disneyland? – Visalia
 Love the tree reflections in the pond! – Ashland
 Here every year wouldn't miss it – Brookings
 Great as always – Jefferson
 Always the best – Florence
 Love it every year – San Juan Capistrano
 Very beautiful – thank you for all your work – Woodland, WA
 Wow! Love the Whale! – Coos Bay
 Our tradition! Thank You – North Bend
 Magical – Bandon
 Very relaxing and enjoyable, The whales are wonderful! – Boise
 Great decorations in the house! – Eugene
 Wonderful, Thank you for the Joy – Horseheads, N.Y.
 Confirms my belief I've found the perfect place to live – Coos Bay
 What a wonderful treat! – Salem
 Exquisite – what a treat! – Flat Rock, NC
 Fantastic as always! Congratulations – Coquille
 Well worth the trip – Eugene
 Always the best – Lincoln City
 Good to be home – Seward, AK
 Beautifully done! – Sweet Home
 Absolutely breathtaking! – Medford
 Can't believe my eyes – Gorgeous – Sandy
 Stupendous – Stockton
 Santa was a big hit with my cousin – Eugene
 Come every year – Thanks – Days Creek
 Just beautiful – your hard work is much appreciated – Cottage Grove
 Well worth the trip to see it! – Las Vegas, NV
 What a beautiful scene – Parksville, B.C. nada
 Fantastic! – Bay Point
 We had to come home to feel like Christmas – Portland
 Very unique lighting! Beautiful! – Hillsboro
 Pure wonder and delight – Butte, MT
 Oregon's Disneyland – Eugene
 Well worth the trip – Calgary, Alberta Canada
 Will bring friends from Indiana next year – this is fantastic! – Fortuna
 This is really a treat! – San Francisco
 Incredibly beautiful, our coastal Christmas wonder – North Bend
 Fantastically Awesome!! – Mission Viego
 Spectacular as always, Thank You – Cloverdale
 The best on the west – keep on going and growing – Kirkland WA

More parking . . . a long time coming



The Goal: Add more parking.

Every year since we began the Holiday Lights at Shore Acres we've heard, "You need more parking." We always agreed, but parking costs money - a lot of money. In 1994, we added bus and RV parking on the exit road. Then in the fall of 1995 it finally became possible to add 55 more diagonal parking spaces for cars. In two years the Friends in partnership with Shore Acres State Park nearly doubled the parking. It really made a difference this season and we feel it will continue to make a difference as the visitor count continues to climb. This year and next, we hope to add more parking lot lighting. ❀

Photos by George Guthrie



Laying the base.



Rolling the asphalt.

More Thanks

Friends' Gift Shop Volunteers

Al Hackworth
Anna Mae Ferry
Babe Beauchemin
Betty Kennedy
Bob Emmett
Bob Valois
Bobbi Reali
Charlotte Skinner
Doris Emmett
Ellen Garner
Eve Ferrell
Fred Ehrman
Genii Robison
Georganna Casey
Gladys Ivy
Helen McElravey
Irene Quick
Jerry Baron
Jim Ferry

Kate Ferrell
Kay Valois
Larry Reali
Laura Collins
Nancy Hackworth
Nancy Weybright
Red Weybright
Rhoda Beauchemin
Roger Collins
Ron Coster
Rose Slevoigh
Sue Ehrman
Vera Fusano
Vivian Day
Winnie Pitsenberger

**Oregon Parks & Recreation
Department**
Andy LaTomme
Donna Flammang
Ellie Kinney
George Guthrie
Greg Foster
Karen Wuethrich

Larry Becker
Maurice Wray
Shore Acres State Park
Sunset Bay State Park

Poster Distribution

The Box Office
Jana Doerr
Daryl Mason

Thanks also to:
Bandon Western World
Bay Area Chamber of
Commerce -
Crystal Shoji
Bay Area Dispatch
Bernard Schlaf
Charleston Information Center
Charlie Kocher
Coos Bay/North Bend
Promotions Committee-Kay
Heikkila
Coquille Sentinel
David Haslow, the Oregon

Coast Show
Don Thompson Construction,
Don & Dan Thompson
Friends of Shore Acres Board
Gerry Livingston
Industrial Steel & Supply
Irene Stoops
Jackie Schlaf
Johanna Dillard, Coastal
Paper & Supply
Jim Collatt, Rotor Rooter
KBRR
KCBY TV
KEZI TV-Oregon Coast Show
KHSN/KOOS
KOBI TV
KSHR/KWRO
Kaarina's Katering, Kaarina
& Dave Scholari,
Phyllis Love
Linda Meierjurgan
Luis Velasquez
Mark Workhoven
Myrtle Point Herald

Nancy Douglas, "The Whole
Shebang"
North Bend Information
Center
North Bend McDonald's,
Mary Coffman
ODOT -John Nelson & Ed
Goodrich
Prime Time
Reedsport Courier
Register Guard
Rick Gibbons, the Oregon
Coast Show
RSVP Newsletter
Seattle Post-Intelligencer
SWOCC
The World

*and anyone whose name
we have missed!*



A HOUSE AT SHORE ACRES?

by Charlie Kocher, Board Member

A proposal to study the feasibility of creating a visitor contact center overlooking the ocean cliffs at Shore Acres State Park was given the "green light" in October by Oregon Parks and Recreation Director Bob Meinen.

Speaking to those attending the Friends' annual Celebration Dinner, Meinen called the possibility of a visitor center "a very positive reinjection of energy back into the park."

An ocean-view building has been

At the dinner, Meinen suggested that the building might have the exterior of one of the former mansions on the estate, with visitor facilities inside that might include visitor education, a gift shop, food service and interpretive center. He has asked department staff members to start the research toward

such a design.

Meinen gave the Friends of Shore Acres approval to work with Area Manager Andy LaTomme on the project. He called for a "quality development, done tastefully," and warned that the project would need "outside funding" to be successful.

"If we all work together, I think we can do it," Meinen said. "I feel pretty comfortable about this. I think it's very doable."

The state parks director praised Friends of Shore Acres as a model for state parks cooperatives around the state. "I want to thank you for giving us your time and giving us your resources," he said.

He also thanked the Friends for pledging to help promote the sales of annual parking passes, noting that a photograph of Shore Acres will be featured on the 1996 permits.

In addition to hearing from Meinen, the Friends offered special awards at the dinner to a number of dedicated volunteers, including:

- Photographers Bernard and Jackie Schlaf, and Luis Velasquez.
- South Coast Printing owner Preston Clement, for continuing



OPRD Director Bob Meinen holds up a holiday sweatshirt presented by Master of Ceremonies David Bridgham.



Gift Shop Coordinators Ellen Garner, Winnie Pitsenberger & Mary Novak with Bob Meinen.

in the Friends' long-range goals for several years. Early in 1995, the Friends asked the Oregon Parks and Recreation Department for permission to proceed with the plan early in 1995. The idea of a building at Shore Acres has also attracted the endorsement of the Tourism Committee of the Bay Area Chamber of Commerce.

In its request, the Friends noted there is no public building with an oceanfront view between Florence and Bandon. We left details of any building open for further discussion with the department, but did suggest that the facility be operated by or in cooperation with the Friends of Shore Acres.

support in publishing Friends' materials.

- Information and Gift Center coordinators Ellen Garner, Mary Novak and Winnie Pitsenberger.
- Southwestern Oregon Rose Society members Jay Dow, and Mike and Jan Kelly. The Society has embarked on a multi-year project to renovate rose beds in the norther portion of the gardens.
- KCBY Television and Production Manager Brent Smith, for producing a volunteer training video.
- Cooky baking coordinators Sharon Fortune, Pearl Groves, Ella Mae Stuart and Marty Wheeler.
- Ocean Spray Cranberries and Fred Meyer Coos Bay, for donation of juice to the annual Holiday Lights Open House.
- Industrial Services, Inc. for helping create the Holiday Lights sculptures.
- Oregon Department of Transportation for installing directional signs to the Holiday Lights display every December.
- "Holiday Lights wizards" Marvin Blenz and Ken Kocher. Blenz creates extension cords for the display, while Kocher repairs the light strings that aren't working.
- Outgoing Board President Doris Emmett. ■

What Your State Parks Do For You

Oregon Parks & Recreation Department's Mission

- Provide and protect outstanding natural, scenic, cultural, historic and recreational sites for the enjoyment and education of present and future generations.

Outdoor recreational activities provide health and long-term lifestyle choices. Regular activities such as hiking, cycling, climbing, canoeing, and running are the best form of personal health insurance and stress management. *Your state parks provide facilities for these recreational activities.*

- Outdoor activities call for group support and cooperation to be successful. Recreating together builds strong families, the foundation of a stronger society. Leisure services are critical to the quality of life of disabled and disadvantaged individuals. *80% of state park usage occurs in groups of families and friends.*

- Recreation and park services are often the catalyst for tourism in rural Oregon. The annual impact of state park visitors and employee expenditures totals about \$500 million statewide. *Investments in park and open spaces pay for themselves.*

- Investing in the environment through parks and open space in Oregon leads to an increase in property values through accessibility to environmentally friendly green spaces and maintains Oregon's quality of life. Through the provision of parks, open spaces and protected natural environments,

recreation can contribute to the environmental health of our state. This is an essential life-sustaining role supported by all OPRD program and facilities. *Oregon's beaches, scenic waterways and Willamette River Greenway are all managed for Oregonians by OPRD.*

OPRD BUDGET

• Revenues 1995-1997

9% State General Fund
28% RV License Fees
36% Camping Fees
9% Day-Use Fees
4% Federal Funds
14% Misc/Other

• Expenditures 1995-1997

84% Park System Operations
16% Agency Policy and Programs

EMPLOYEES

308 permanent ♦ 362 seasonal

VOLUNTEERS

In 1994, 11,967 volunteers contributed 244,127 hours.

Compared to 49 state park systems, Oregon state parks rank:

- 5th in day-use attendance *
- 8th in camper attendance *
- 3rd in visitors per acre 471:1 (national average 64:1)
- 2nd in visitors per employee 63,400:1 (national average 15,400:1)

* Based on information for fiscal year ending June 30, 1994 from survey conducted by National Association of Park Directors

PARK USE & IMPACT

1993-1994 Attendance
Day-use: 39.2 million
Camping: 2.01 million

PARK USER FEES

User fees fund 45% of OPRD's budget and are spent on park services and repairs. ■

NEW: RESERVATIONS NORTHWEST

1-800-452-5687 ♦ (TT/VOICE 1-800-735-2900)

- * Reservations for yurts, group areas, horse camps and regular campsites at 27 parks (Reservation deposit required—first night's rate plus \$6 non-refundable fee); also Washington state park campgrounds.
- * Details on which parks are offering what discounts and when.
- * Information on campsite availability, other recreational opportunities.

OREGON STATE PARK SYSTEM

Total acres: 92,238

Total number of park areas: 221

Campgrounds: 50

- 5,754 traditional campsites
- 66 group camp areas
- 20 hiker/biker camps
- 28 yurts
- 6 horse camps
- 1 rock climbers' bivouac

Day-use areas: 203

- 6,501 picnic sites
- 63 picnic shelters

Willamette River Greenway:

- 91 parcels (56 developed)
- Trails: 489 miles (224 miles paved)
- Boating/fishing docks: 112, plus 3 concession marinas
- Designated swimming areas: 21

Other facilities:

- Silver Falls Conference Center
- 5 meeting halls
- 10 indoor overnight facilities
- 7 interpretive centers/museums

Other OPRD Programs

- Ocean shores (protects 362-mile shoreline)
- State Scenic Waterways (19 rivers totaling 1,150 miles, an 1 lake)
- Willamette River Greenway (250 miles with 85 state-owned riverside parcels)
- Oregon Recreation Trails development
- Grant assistance for local park and recreation development
- State participation in planning management of Oregon's outdoor recreational resources. ■



Thanks, New and Renewing 1996 Members

HURRY, HURRY, HURRY...

☺ Friends Discount on the OPRD Parking Permit Continues

In December we sent dues renewal notices that offered all of you an additional benefit for renewing your membership. *The benefit?* A substantial discount off of the 1996 annual parking permit, which features a picture of Shore Acres Gardens.

Many of you responded by return mail. In fact, so many people responded, I've had to make the membership list on these pages *very, very tiny* so all the names will fit. That's ok, we appreciate your support!

However, if you missed the opportunity, you have another chance.

At the January board meeting, the Friends' Board of Directors voted to extend the offer until the end of June. So . . . new and renewing members will continue to receive a discount on the permit. First you get the permit for the 1995 price of \$20. In addition, you also get a 10% discount coupon based on your level of membership. For example if you are a Patron (\$25) member, the discount is an additional \$2.50.

It's a great way to get a beautiful photo of the gardens for your car window . . . and it will admit your car to 24 day-use fee parks in the state. ■

A NEW MEMBER WRITES . . .

January 5, 1996

Dear Shore Acres Friends -

While in Oregon I visited your Shore Acres Light Display twice - it was absolutely beautiful! Keep it up!

Valerie Boggs, formerly from Coquille, now living in Anchorage, Alaska. ■

Editor's Note: If your name is missing from the list of members, call 756-5401.

Life

Jack & Carol Shinniger, North Bend
L.L. Stewart, Eugene
Ann Cammarano & Jack Daubenspeck,
Westlake OR
Sause Bros. Ocean Towing, Coos Bay

BENEFACTOR

Sven & Pat Backman, North Bend
Cheryn's Seafoods, Colleen Peterson,
Charleston
Life Care Center of Coos Bay,
Patrick Burke, Coos Bay
Bob & Jean Macy, Coos Bay
North Bend Education Association
Maybelle M. Olson, North Bend
Bob & Margaret Perkins, Coos Bay
Al & Merriel Stinchfield, Lakeside
R. Georga Taylor, Coos Bay
Stu & Shay Weinger, Coquille

SPONSOR

Al & Judy Aslakson, Reedsport
David & Shirley Bridgham, North Bend
Ivan & Nancy Brooks, Oregon City
Don & Margaret Burd, Coos Bay
Clariece Graham, San Francisco
Virginia Grant, Coos Bay
Howard & Nellie Hall, Coos Bay
Kenn Hess, Portland
Kent & Jill Hoddick, Portland
Steve & Jan Hooper, North Bend
Monita Johnson, North Bend
Nadine L. Knutson, Coos Bay
RJ "Lucky" Larson, Salem
Robert & Carol Lee, North Bend
McDonald's Coos Bay/North Bend
Frank & Connie Maguire, Coos Bay
Dr. & Mrs. Philip Morgan, Coos Bay
Oregon Federation of Garden Clubs,
Rogue District #5, Coos Bay
Oregon Parks & Recreation Department,
Craig Tutor, Salem
Kippen & Polly Parret, Coquille
George & Betty Phipps, Coquille
Donna Rabin & Steve Richardson,
Coos Bay
Reese Electric, Inc., George & Sharen
Reese, North Bend
Robert L. & Betty M. Renner, Coos Bay
Karl D. & Alice L. Schmidt, Coquille
Jim & Lorna Shivley, Bandon
Frank & Donna Smith, North Bend
Ted & Carolyn Terry, Coos Bay
Lyn & John Topits, Coos Bay
Jane & Harold Wrigley, Coquille

PATRON

Dan & Barbara Acker Family, Rainier OR
Pearl Affholter, Eastside

Allan & Brenda Andrews, Des Moines
William & Patricia Bauer, Eugene
Judge Paula Bechtold & Robert D. Laird,
Coos Bay
Deloris Bellas, Coos Bay
Don & Richie Bock, Coos Bay
Patricia Ann & Bill Borchert, Coos Bay
Don & Bernice Borglum, North Bend
Robert K. Boucher, Coos Bay
Jack Brookins, North Bend
Robert & Marcia Burgdorff, Coos Bay
Lily M. Busick, Coquille
Mr. & Mrs. Ernest Carlson, Sublimity OR
Georganna Casey, Coos Bay
Shirley Champagne, Coos Bay
Coos Head Garden Club, Coos Bay
Pete & Carole Dawson, Coos Bay
Marlene M. Dolezal, Puyallup WA
Sue & Fred Ehrman, Coquille
Bob & Doris Emmett, North Bend
Evelyn A. Evans, Cave Junction OR
John & Tari Fitzpatrick, North Bend
Cranson & Helen Fosburg, Coos Bay
Barbara & Steve Fowler, North Bend
Sam & Alice Freeman, Fairfield, CA
Ellen Garner, Coos Bay
Robert & Dorothy Gillett, Coos Bay
Clare D. Gove CPA, PC, North Bend
Robert R. Graham, Eugene
Tom & Wanda Graham, North Bend
Frank & Becky Hatcher, Portland
Hauser Garden Club, North Bend
Bruce & Fran Hemm, Oakridge OR
Mary E. Hill, Glide OR
Tom & Gloria Hillstrom, Coos Bay
Alice Hobbs, Reedsport
Dr. & Mrs. J.A. Holbert, Coos Bay
Mrs. Meg Jacobs, Medford
Bill Kean, Coos Bay
Stan & Ellie Klenke, Canyonville OR
The Kocher Family, North Bend
Ann & Tim Koppy, North Bend
Bonnie & Tony Koreiva, Coos Bay
David & Florence Kuhns, Eugene
Mr. & Mrs. R.V. Laros, Salem
Lynn A. Larsen, Portland
Steve & Marietta Laws, Yreka CA
Lindy Lane Nursery, Gus & Ann Langley,
Coos Bay
Kay Lorence & Chet Haliski, Coos Bay
Carol & Mike Lucas, Concord CA
Andy & Lynn Nasburg, Coos Bay
Roy & Maxine Nicely, North Bend
Sidney & Norma Norris, Coos Bay
Jim & Betty Ohman, North Bend
Barbara Olson, Coos Bay
Keith Ott, Charleston
Irene Quick, Coos Bay
Lorna Richards, Coos Bay
Mike E. Rose, DMD, Coos Bay



Thanks, New and Renewing 1996 Members

PATRON (contin.)

Robert & Florence Ross, Central Point
 Virgil & Brownie Ruggles, Coos Bay
 Dean & Carolyn Russell, Coos Bay
 Bill & Joan Russell, Bandon
 Thomas & Laura Scholtens, North Bend
 Mr. & Mrs. Kenneth Schuldt, Roseburg
 Mrs. Al Seelig, Coos Bay
 Sonny & Helen Shefstad, Coos Bay
 Shirley Shellabarger, Coos Bay
 Col. Clair L. Shirey, USAF Ret.,
 Eagle River AK
 Tom & Julie Spence, Coos Bay
 Mr. & Mrs. R.R. Stephens, North Bend
 Marty Stewart, Lakeside
 Ella Mae Stuart, North Bend
 Richard & Irene Sund, North Bend
 Ed & Judy Swenson, Bandon
 Jack & Emma Townsend,
 Port Townsend WA
 Jim & Diane Verger, North Bend
 Bill & Shary Werdel, Eugene
 Nancy & Red Weybright, North Bend
 John & Teri Whitty, Coos Bay
 Keith & Darlene Wingfield, Newberg
 Robert & Dorothea Yantis, Coos Bay

FAMILY

John & Barbara Anderson, Coos Bay
 Harold & Lynn Bailey, North Bend
 Ben & Pauline Barnett, Medford
 Melvin & Marjorie Becker, Grants Pass
 Reese & Carol Bender, Coos Bay
 Valerie K. Boggs, Anchorage AK
 Frank & Opal Bryant, Coos Bay
 Rose & Arthur Clark, Eastside
 Roger & Laura Collins, Coos Bay
 Don & Cindy Crawford, Coquille
 Karen & Peter Crosby, North Bend
 William & Heide Cummings, Coos Bay
 Rick & Liz Curtis, North Bend
 Jay & Joy Dow, North Bend
 Ray & Rosella Duskin, Coos Bay

Helen & Wally Ferguson, Coos Bay
 Kent & Ethel Ferris, North Bend
 Anna Mae & Jim Ferry, Coos Bay
 Mike & Laura Fisher, Coos Bay
 Chris & Donna Flammang, Coos Bay
 Rich & Jody Hamel, Bandon
 Willard & Genevieve Hayne, North Bend
 Jim & Brenda Heaney, North Bend
 Chuck & Mary Howard, Coos Bay
 Calvin & Lois Johnson, Florence
 Kenn & Betty Kennedy, Coos Bay
 Don Larsen, North Bend
 Pam Laurie, North Bend
 Bill & Sharon Lemoine, North Bend
 Harry & Sabra Luckett, Coos Bay
 Don & Joan Lynam, Bandon
 Trish Mace & Richard Emlet, Coos Bay
 Elizabeth A. Massey, Bandon
 Betty & Bill Mault, Coos Bay
 Rev. Thomas & Esther Murdock, Coos Bay
 Gregg & Connie Nelson, Coos Bay
 Glen E. & Jean E. Olson, Coquille
 Monica Rey, Gold Hill OR
 Al & Sally Roberts, North Bend
 Ethel S. & Henry Rogers, Ashland
 Wm. & Ginger Sawyer, Coos Bay
 Don & Shirley Sell, North Bend
 Russ Shaddix, Arcata CA
 Lynn Standish, Coquille
 George O. Ten Eyck, Springfield
 Ben & Pat Titus, North Bend
 Don & Carol Todd, Coos Bay
 Alfred & Caroline Tyson, Elkton
 Bob & Kay Valois, Coos Bay
 Luis & Josefina Velasquez, North Bend
 Carol Ventgen & Mike Perkins, North Bend
 Dick & Judy Wagner, North Bend
 John & Linda Wallum, Vancouver WA

INDIVIDUAL

Beth Andersson, Eugene
 Marion Babcock, Charleston

Helen Barton, North Bend
 Juanita Bay, Coos Bay
 B.P. Beauchemin, Coos Bay
 Martha Boring, Coos Bay
 Lynn Carroll, Coos Bay
 Donna Davis, Coos Bay
 Melissa Gamble, Medford
 Shirley Gitchell, Coos Bay
 Pearl Groves, North Bend
 Ms. Lavinia Guntle, Coos Bay
 George Guthrie, Coos Bay
 Gladys Ivy, Coos Bay
 Cory Jacobs, Eugene
 Maxine Johannesen, Coos Bay
 Sally Jones, Coos Bay
 Cappy Klein, Coos Bay
 Una Kruse, Coos Bay
 Fran Lamb, Gardiner
 Eleanor Malzahn, Lakeside
 Lori Metschan, Black Diamond WA
 Mildred L. Miller, Coquille
 Mary Novak, Coos Bay
 Virginia Paczesniak, Coos Bay
 Winnie Pitsenberger, Coos Bay
 Mrs. Hazel Pletchmy, North Bend
 Carole Quick, Coos Bay
 Helen F. Ray, Coquille
 Terry Richards, North Bend
 Alice Richter, Coos Bay
 Monica Robertson, Coos Bay
 Archi Rosenthal, Coos Bay
 Geneva Selin, Coos Bay
 Celia Sheridan, Coos Bay
 Carl Siminow, Coos Bay
 Charlotte S. Skinner, North Bend
 Donna M. Sturdivan, North Bend
 Bonnie E. Thornberry, Medford
 Dick Van Natta, Coos Bay
 Avah G. Wiggins, Brookings
 Lois Winn, North Bend
 Caroline M. Wright, North Bend
 Karen M. Wuethrich, North Bend

Membership renewal each year is January 1. Your mailing label shows a category ending with a "6" if you are current until Dec. 31, 1996. To become a member or to renew your membership, please send this form along with your payment to Friends of Shore Acres, Inc., P.O. Box 1172, Coos Bay, OR 97420. For more information, call 756-5401.

Remember, your membership entitles you to a 10% discount in the Information & Gift Center.

Friends of Shore Acres, Inc. is a private non-profit organization with tax-exempt status.

- | | | | |
|--|---------------------------------------|---|--|
| <input type="checkbox"/> \$10 Individual | <input type="checkbox"/> \$25 Patron | <input type="checkbox"/> \$100 Benefactor | <input type="checkbox"/> \$500 Life |
| <input type="checkbox"/> \$15 Family | <input type="checkbox"/> \$50 Sponsor | <input type="checkbox"/> \$250 Sustaining | <input type="checkbox"/> Gift/Memorial |

Name / Address / Phone _____





Early Evening Holiday Lights at the Japanese Pond

Luis Velasques

Friends of Shore Acres, Inc.
P. O. Box 1172
Coos Bay, OR 97420

ADDRESS CORRECTION REQUESTED

NON-PROFIT ORG.
BULK RATE
U.S. POSTAGE
PAID
COOS BAY, OR 97420
PERMIT NO. 305

