

Friends of Shore Acres



Winter/Spring 2000 Journal - Vol. 12 No. 1



Holiday Lights - "Better than Chocolate!"

by Shirley Bridgham, *Holiday Lights Co-Chair*

So wrote a visitor from Ashland. Another wrote, "Been to Benbow and Ferndale, California for the Christmas Lights. This is the most spectacular. - Newport. Single word comments included: "WOW!" - Yamhill, "Awesome!" - Omaha, "Fabulous" - Albany, "Magical!" - Reedsport, "Wonderful" - Portland. A visitor from Salem summed it up, "I get so proud of all your volunteers; this is awesome."

The comments in the guest books always revitalize and energize us for the next season. The "community" in our lights event is very apparent to our visitors who come and enjoy our extraordinary display and the wonderful area in which we live.

It was an outstanding season. We estimate 52,000 visitors in 39 nights. Excellent weather the two weeks before Christmas made up for some not-so-nice nights early on. All in all we had 21 clear or cloudy (no rain) nights. So . . . three thousand dozen cookies were gone by Christmas. We baked and bought another 9,000. The 100

cases of apple juice donated by Fred Meyer were also gone by Christmas. We bought 20 more.

Visitors were generous in their donations and the Information & Gift Center did a brisk business. That generosity combined with the excellent business and community support we are blessed with makes our event one of the most successful of its kind anywhere.

We know Holiday Lights 2000 will be another important milestone in the life of the "Friends" with the addition of another lighted garden and a total of 225,000 lights. ■

INSIDE
Looking Back at 1999
and Looking Ahead
to 2000-2001

* * *

Exciting Projects &
Activities of the
Friends of Shore Acres
and Shore Acres State Park

FRIENDS OF SHORE ACRES, INC.

Journal Editor, Layout & Design

- Shirley Bridgham

Journal Photographer - Luis Velasquez

Officers

Shirley Bridgham, President 756-5401
Kenn Kennedy, Pres.-Elect 267-7597
Betty Kennedy, Secretary 267-7597
Barb Taylor, Treasurer 756-5443
David Bridgham, Past President . 756-5401

Directors

Shirley Champagne 267-3458
Ellie Kinney-Martial 267-6580
Gregg Nelson 269-7978
Chuck Lembke 396-2784
Winnie Pitsenberger 267-3001
Bob & Betty Renner 888-3364
Terry Richards 267-2141
Carl Siminow 888-2317
Kay Valois 267-4983
Richard Van Natta 269-5396

Information & Gift Center Manager

- Shirley Bridgham

Volunteer Coordinators

- Kay Valois, Betty Kennedy

Buyers

- Shirley Bridgham, Winnie Pitsenberger, Kay Valois

Oregon Parks & Recreation Department Manager Area 4 Southwestern Oregon

- Andy LaTomme 888-3778 x28

Assist. Mgr. Area 4 Southwestern Oregon

- Larry Becker 888-3778 x22

Shore Acres Landscape

Maintenance Superintendent

- George Guthrie 888-3732

HOLIDAYS LIGHTS

Co-Chair & Garden Lights Design

- Shirley & David Bridgham 756-5401

House Decorations

- Robynn Reed 756-1256

Host Volunteers

- Bonnie Koreiva 267-4037

Cooky Bakes

- Shirley Champagne 267-3458

Cider Spice

- Betty Renner 888-3364

Entertainment Coordinators

- Gregg & Connie Nelson . . 269-7978

Printed on recycled paper,
using soy ink, by South
Coast Printing, Coos Bay



Our Mission . . .

"The purpose of Friends of Shore Acres, Inc. is to participate in Interpretive, Educational, and Physical Development Programs with Sunset Bay Management Unit." FoSA Bylaws

Our New Look

by Shirley Bridgham, Editor

For the past 12 years, I've been creating and producing this publication – which started out as a simple 4-page newsletter in black and white. Starting with WordPerfect 4.1 and progressing through WordPerfect 7, with several computers along the way. (*Are they ever fast enough?*) We added color to the cover in 1991. In 1992 we renamed it our *Journal* and in 1996 it became a bi-annual publication.

Our new look with the color cover will be our masthead for 2000 and 2001. It's made possible with the support and help of **South Coast Printing** and **Preston and Karen Clement**, who have made it affordable for us to include so many photos in every issue all these years. The photos help make our *Journal* a good historical record of the Friends. I'd like to thank South Coast Printing's graphic artists **Anne Matthews** and **Chery Hurst** for taking my concept for the cover and creating what I feel is a true work of art. **Year Round Beauty** truly describes Shore Acres State Park. We are so lucky to have such a wondrous place to volunteer our time and help. I'd also like to thank **George Guthrie**, **Gregg Nelson** and **Larry Becker** for their news articles, which I'm sure you'll find interesting and informative.

Cover Photo Credits: • Rose - Jackie Schlaf • Aerial - Ward Robertson
• Holiday Lights - Luis Velasquez • Remainder - Shirley Bridgham

All other photos, unless otherwise indicated, are by **Luis Velasquez**. Luis is a professional photographer who has always volunteered his photography for the Friends. Thanks, Luis and all photographers! ■

* Events 2000 - Shore Acres State Park

April 22 - Bonsai Day

May 14 - Rhododendron Sunday - Mother's Day

June 18 - Rose Sunday - Father's Day

July 21 - Oregon Coast Music Festival Garden Concert

Sept. 23 - Dahlia Day

Oct. 7 - Orchids "Gems of the Rain Forest"

Nov. 23 - Jan. 1 - Holiday Lights & Open House

*subject to change



South Coast Printing, Inc.

"For All Your Printing Needs"

541-269-5853



Many milestones and memories in 1999-2000

by Shirley Bridgham, President, Friends of Shore Acres



Brown's Studio-Memo Jasso

Very busy is a good way to describe the past year.

So what did we accomplish?

- In February we started with a *Journal* recapping the holiday lights and the previous year's activities.
- Brochures were revised and reprinted. They included rhodies, roses, memorials, and Simpson Reed & Shell Island..

The Memorial Display in the Interpretive Entrance was installed in late May and we held the Memorial Fountain Dedication in June. Currently, that display is being updated and doubled in size for installation in April.

- Accepted for the park a new pergola given by life member Merriel Stinchfield in memory of her late husband Al Stinchfield
- Increased the merchandise in the Information & Gift Center and had a banner year as a result.
- Completed the kitchen remodeling project in time for the holidays..
- Sponsored half a dozen "flower" days.

- Held our annual meeting in September. After many years of service, Mary Novak resigned from the board because of other commitments. Shirley Champagne and Ellie Kinney-Martial joined the board.

- In the election of officers, David passed the gavel to me and Kenn Kennedy became our president-elect. The rest of the board was re-elected.

- Major effort was put into the annual Holiday Lights and Open House with more than 1,000 volunteers participating.

- Since the holidays, we've had our "shakedown potluck" meeting and a lunch meeting for the gift shop volunteers.

We have great plans for 2000-2001 (see pg. 23) and I want to thank all of our members and supporters who make all things possible! ■



Shirley Bridgham

The annual dahlia displays take a lot of care. Conservation Aide Rochelle Karpik keeps them looking splendid!

2000 Artist in the Park

Terry Magill has been chosen the "Artist in the Park" for 2000 at Shore Acres. She follows in the footsteps of last year's artist Pat Weaver. The program, which began in 1997, was created to increase public awareness of the beauty of Shore Acres Gardens and the work of local artists. It was the inspiration of Merrie Holbert who also served as Shore Acres' first artist.

Terry Magill is a product of the beautiful Puget Sound region of the West Coast, where she began watercolor painting early in childhood in response to the vibrancy and beauty of her surroundings. She studied art through her school years and then made a living while raising her family by doing freelance scientific artwork. During this time, Terry illustrated 5 medical textbooks, among other varied projects.



Terry Magill

Photo courtesy of artist

Teaching has been her focus the past two decades in both Northern California and now Coos County. She maintains regularly scheduled classes through Southwestern Oregon Community College, the Coos Art Museum, South Slough Estuarine Reserve, public schools, and private workshops.

Her work can be seen at the South Slough Interpretive Center and at the Clock Tower Gallery in Bandon.

We welcome Terry as our 2000 artist. Visitors will find her painting at many of the "flower events" we have scheduled this year. Also, some of her work in the form of notecards and small prints will be available in the Information & Gift Center at Shore Acres. ■



SUBTLE CHANGES LEAD TO SIGNIFICANT GROWTH

by Larry Becker, Assistant Manager Area 4

Many of us, when we look at the surrounding landscape, fail to see the subtle changes that occur in the natural succession of an ecosystem. When we walk through the formal gardens at Shore Acres, hike along the coast trail, or stroll along the beach at Sunset Bay we are captured with the beauty of creation as it triggers past memories. We notice cataclysmic events that change the outline of the landscape, whether manmade or acts of nature, because of their affect on our mental images formulated through past experiences.

The loss of portions of the middle parking area of Sunset Bay day use is an excellent example of such an event. In the winter of 1998 the trees were hit by high waves and heavy surf undercutting their roots and causing the trees to succumb to the forces of gravity. The parking lot they had valiantly guarded was swept away, causing us experience a sudden and unexpected loss.

Yet, since 1995 the slow loss of the sand was occurring along the parking lot. Sand that formed a fragile barrier between the sea and the trees; sentinels who guarded the beach and provided shade, and a sense of rightness in the world for those who stood beneath them.

In the 1990's the Oregon Parks and Recreation Department, like those trees, seemed to be affected by cataclysmic changes caused by outside forces that had no regard for the foundation and values that had shaped the organization for many years. When the department was re-organized in 1994 many people were unprepared, believing the existing system was working fine and only needed minor

tuning. In looking back, it is easy to see that the forces that caused significant, unexpected change were the result of complacency within the agency, and neglect and apathy from Oregon's government and the general public. State parks had atrophied due to comfort and was dying due to neglect.

The re-organization sparked new growth and infused life back into the agency. As difficult as it was for many, change was essential and brought about many positive results, including: an increase in volunteer programs, heightened public awareness of state parks financial and maintenance needs, and a recognition by park staff that state parks must remain innovative in their approach to resource stewardship, providing recreation, and establishing stable funding.

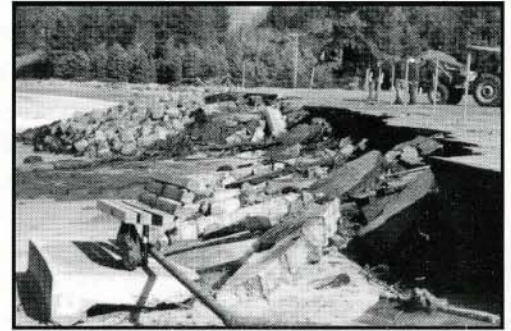
As we move into year 2000, change continues to be the constant for state parks. In January Bob Meinen, parks director since 1992, resigned. Bob dedicated his time and energy to turn state parks from a path to destruction to

a path of innovation, vibrancy, and community based value. His contribution to sustaining livability in Oregon will be a legacy long remembered.

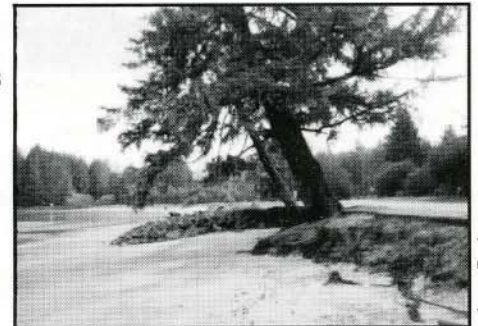
The Oregon Parks and Recreation Commission has begun the process of

defining the vision they have for the agency. The new director will be a vital part of how the vision is implemented. Remembering the re-organization 1994, let us, with excited anticipation, look forward to future changes as opportunities for growth.

Changes at Sunset Bay



Larry Becker



Larry Becker

Change is a process that occurs over time, even though it may only be measured by specific events. If we have learned anything from the challenges of the 1990's, it is that each of us must recognize that for an organization to survive, grow, and function as an integral part of any culture, it must continue to embrace, influence, and adapt to an ever changing world.

Each of you, as park volunteers directly or indirectly through the Friend of Shore Acres, are vital to the Oregon Parks and Recreation Department's survival and success during changes. You bring ideas, new ways of thinking and looking at things, and the energy to pursue success. As we anticipate the challenges of the future please continue with us in the journey. ■



Farewell to 1999 - Trials, Tribulations, Treasures and Tributes

by George Guthrie, "Head Gardener" at Shore Acres

In case you missed it — I almost did — after waiting in the wings for what seemed like forever, something reasonably resembling summer arrived at Shore Acres just in time for Fall.

Our cool wet spring had the effect of slowing down the growth and flowering of many of our plants and as a result we still had a rhodie or two flowering in the middle of July — at least month past their 'normal' time.

Winter of 1998-99 was especially unkind to a number of our exotic plants. The scarlet bottle brush was killed right down to the ground and our usually majestic *Lily of the Nile* plants were turned into so much mush and slush. Nevertheless, both came back — though they did not bloom. But, if those wild and crazy gals—lady luck and mother nature — decide to conspire in our favor, maybe this year.

Oddly enough, our roses did very well. The All America Rose Display Garden was especially lovely. The new AARS 'Y-2K' award winners were announced with top honors going to *Knock Out*, *Crimson Bouquet*, and *Gemini*. We put up some temporary fencing around some of the roses to spare them the attentions of some rascally rabbits who apparently find them as luscious to munch on as we find them lovely to look at.

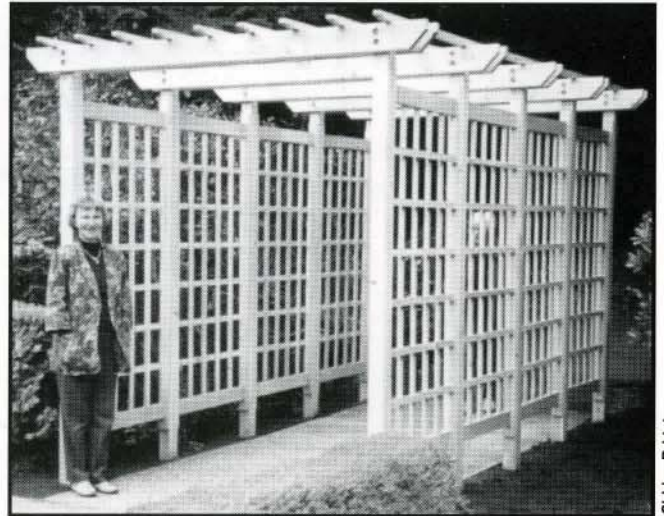
One of the magical things about Shore Acres is that it seems to inspire nice people to do nice things for the garden.

Last year we were especially helped out in very special ways by the following very special people.

Chuck Jackson of our own area very generously donated a "truck-load" of dahlia plants to help us *fill out* the garden beds with color.



Artist Pat Weaver paints near the dazzling dahlia display.



Shirley Bridgman

Friends Life Member Merriel Stinchfield poses next to the new pergola she provided for the park in memory of her late husband Al Stinchfield.

Mr. Phil Edmunds of Edmunds Roses in Wilsonville came to our rescue by helping us replace winter-kill roses with brand new ones.

And last but certainly not least, **Mrs. Merriel Stinchfield**, through the Friends, gave Shore Acres a brand new rose pergola in memory of her late husband, Al Stinchfield. The old arbor had essentially fallen apart on us a few years ago. The new pergola is a beautiful construction of Port Orford white cedar and is a fitting ornament to the garden.

To complement the pergola, we have some new roses to climb up on it. The lovely old climber, *Royal Sunset*, will now be joined by *Westerland* of similar apricot orange hue and *Dublin Bay*, a dark red hybrid tea type. Hopefully, they will grow, thrive and eventually ramble and tangle all over our lovely new pergola.

The new roses are the result of two generous donations. The first by workers of the Coos County Juvenile Department in memory of former assistant director Jim Minty who passed away in August of 1999. Jim was a lifetime lover of roses, sunrises and the ocean. The second donation of roses is in memory of Warren Hootman by a special friend.

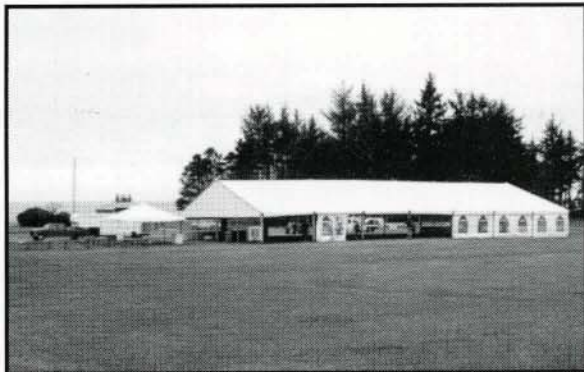
Thank you, everyone. ■



Oregon Governor's Conference on Tourism ♦ April 1999

♦ The Highlight - Shore Acres State Park *

* Perfect Weather, Seafood Delicacies, Lively Music, & Holiday Lights



A giant tent was the dinner site of the Monday night festivities of the Tourism Conference.



North Bend High School Jazz Band played nostalgic big band tunes of the 1940's.

Holiday Lights in April

Some very dedicated Light Stringers recreated the holiday lights scene in a section of the garden near the Garden House just for the Tourism Conference. Giant landscape lights were also installed. Our visitors were impressed!

A huge thanks goes to the following for their hard work - John and Barbara Anderson, David and Shirley Bridgman, Shirley Champagne, Jay and Joy Dow, Kenn Kennedy, Cappy Klein, Betty and Bill Mault, Wayne Murray, and Irene & Richard Sund. ■

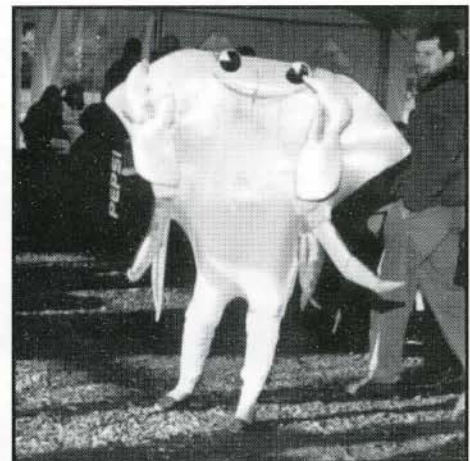
**Note of Appreciation
from Ann Koppy,
Member of the
Conference Committee**

David & Shirley,

*Your cooperation and
enthusiasm were a mainstay in
ensuring the success of the
Conference.*

*Thank you so very much to
Friends of Shore Acres for
helping put it together! You
were great.*

Ann K.



The "crabby" host was played to the hilt by Mel Campbell of Charleston.



Dungeness crab was just one of the many seafood delicacies enjoyed by the many visitors.



Special hosts Roger Collins and Karleen Burgett in the guise of Louis and Cassie Simpson provided a glimpse of Shore Acres' history.



Early Spring Adventures ❀

❀ Bonsai Day and Pond Cleaning

Bay Area Bonsai members helping at Shore Acres on April 17 included: Bob & Betty Renner, Betty & Kenn Kennedy, Theo & Virginia Stanley, Lois Strong, Uschi Langley, Ken Windred, and Marian Tracey. Also,

John Bosse brought a plant for the display and Eva and George Ahuna sent a plant for the display. Like all the annual *flower days* this one is favorite of visitors to Shore Acres. ■



Volunteers in the Garden House are ready for visitors: (L-R) - Virginia Stanley, Theo Stanley, Uschi Langley, Lois Strong, and Betty Renner.



Visitors enjoy the beautiful bonsai display presented by members of the Bay Area Bonsai Society.



Volunteers (L-R) Jim Shivley, Bob Renner, Lorna Shivley and Theo Stanley take a break from host duties.



Also ready for visitors - (L-R) Kay Valois, Betty Kennedy, Kenn Kennedy, and Carl Siminow.



BLM volunteers do their annual "brush & flush" on the pond at Shore Acres.

BLM pond cleaners included: Stafford, Jacob, Kyle and Jessica Owen, Emmett Courtright, Elaine Raper and her daughter, Martin Pike, Roman and Beth Watt.



Fire hoses make the job easier!

*Thanks,
Everyone!*



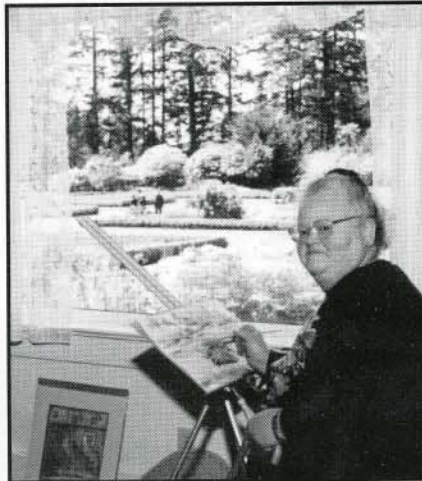
Rhododendron Sunday - Mother's Day

✿ A Very Special Day for Moms and Families at Shore Acres Gardens ✿

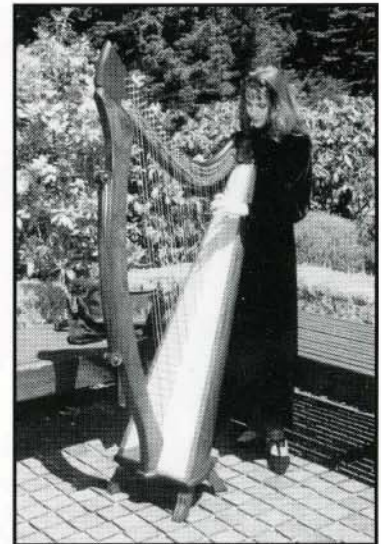
One of our annual "flower days" is Rhododendron Sunday on Mother's Day. It's a wonderful way for families to celebrate this traditional holiday. ■



George Guthrie answers visitor's questions about rhododendrons and the gardens.



Our "Artist in the Garden" Pat Weaver paints the scene.



Harpist Kathleen Kirksey charmed visitors with her beautiful music.

INFORMATION & GIFT CENTER

Lunch Meeting - February 26, 2000



Information & Gift Center Volunteers who attended lunch meeting - (Front L-R) Dorothy Dinkins, Juanita Bay, Winnie Pitsenberger, Betty Kennedy, Kenn Kennedy, (Middle L-R) Kay Valois, Dona DeGraw, Gladys Ivy, Shirley Champagne, Betty Plant, (Back L-R) Ken DeGraw, Sharon Kolkhorst, Lou Kolkhorst, Genii Robeson, Bob Plant - Not pictured: Shirley Bridgham

Manager Shirley Bridgham congratulated the volunteers and park hosts on making 1999 such a successful year. All agreed they have a great time working at the Gardens. Some suggestions that came out of the meeting included having a phone available to park hosts at Sunset Bay Campground, self-closing hinge on IGC door, coat rack for volunteers, and public service announcements to media about flowers in bloom, etc. A big thanks to Lou Kolkhorst and Winnie Pitsenberger, who volunteered to do the PSA's.. ■

One of the engines that helps run our activities is the Information & Gift Center at the Gardens. Dedicated volunteers and park hosts work in the IGC. They do a super job! Visitors get good information and a great opportunity to buy unique and interesting items, many of them locally produced.

Best sellers include postcards, notecards, books, videos, and shirts.

Some examples:

- "A Gathering of Finches" by Jane Kirkpatrick
- "Gardens Above the Waves" Viewbook and video
- "Simpsons of Shore Acres" by Stephen Dow Beckham
- Dover books and other items for children
- Books on plants, birds, marine mammals, etc.
- Friends of Shore Acres mugs
- Oregon and Oregon Coast books, calendars, and video tapes
- Computer Screen savers - Oregon Coast, Whales, Lighthouses, Holiday Lights
- "Grandma" t-shirts for small children
- Vests, denim shirts and hats with our embroidered logo
- Weather sticks (they really work)
- Cape Arago Lighthouse key chains and magnets
- and much, much more!

A special thanks to Al Aslakson for developing the Holiday Lights screen saver. It's a winner!

And thanks to all who volunteer in the IGC!



Memorial Fountain and Display Dedicated June 5, 1999



Fountain designer Michael Vaughan with his wife, mother and daughter (L-R) Deborah, Dorothy and Lucia Vaughan.

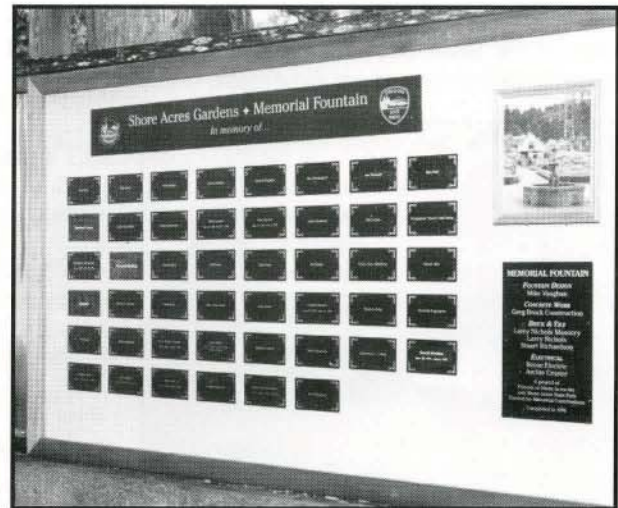


George Guthrie discusses fountain with visitors.

In memory of . . .

Phil Ryan	Theodore C. (Ted) Starke
Bill Grant	Helen W. Barnard
John Bergen	R. J. "Lucky" Larson
Robert Hobbs	Judy Elliott
Earle Livingston	Mildred Larsen
Ella & Lawrence Pennington	Mary Rosevear
Joe Dronzek	Catherine L. Colton
Bea Hall	Darrell Sheridan
Siegfried Grohse	Virginia Ailts
Ellen Stinchfield	Jane Fagette
Ward Robertson	Patty Goll
Betty Larsen	Nadine Knutson
Viola Larson	Sharon Lee Beardsley
Lloyd Knutson	Jon Bridgham
Bill Carter	Kenneth D. Willsey
Charlene "Jerrie" Van Natta	Bernard Schlaf
Elizabeth Armstrong	Janice Kay Kersey Marshall
Elizabeth Harding	Paul H. Fagette Sr.
Gloria Mack	William L. Needles
Bud Kane	Mary G. Lyon
Julie Kane	Ronald Lyon
Joe Burger	Beryl E. Terry
Nancy June Mattison	Christopher H. Baune
Oscar Alto	Jacqueline "Jackie" O'Hara Miller
Edith Simpson	Jack H. Naish
Merlin L. Needles	Samuel Karavanich
Nina Rees	George Vaughan
Mrs. Opal Jared	Lola Gardner
Jane Jones	Jim Minty
Charles Busick	
Eleanor King	
Dorothy Lagergren	

* Memorials from March 1988
thru February 2000



Memorial Fountain Display dedicated June 5, 1999.

Memorial Fountain - Completed in 1996

Fountain Design

Mike Vaughan

Electrical

Reese Electric

Archie Crozier

Concrete Work

Greg Brock Construction

Brick & Tile

Larry Nichols Masonry

Stuart Richardson

A project of Friends of

Shore Acres Inc., and

Shore Acres State Park

Funded by Memorial

Contributions

An ongoing program

until Memorial Display is completed

Friends of Shore Acres, Inc. will continue to accept contributions given in memory of loved ones until the two panels of the Memorial Display in the Garden's interpretive entrance are complete. To add a memorial name, the minimum contribution should be \$50 or more. For a brochure, contact Friends of Shore Acres, Inc., PO Box 1172, Coos Bay, OR 97420 - 541-888-3732 or 756-5401. ■



Rose Sunday - Father's Day

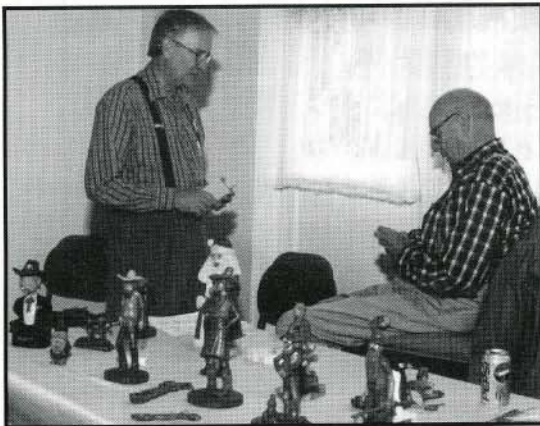
✱ Rose Experts, Wood Carvers, Artists and Visitors



Shore Acres' "Head Gardener" George Guthrie and Mary Anne Kreutzer of the South Western Oregon Rose Society answered questions and dispensed advice about roses.



John Menegat, George Guthrie, Mary Anne and Ed Kreutzer are ready for the many questions visitors have about roses.



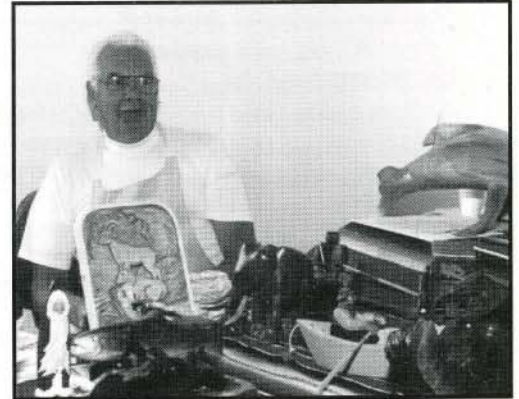
Friends President David Bridgham talks with Don Capehart of the South Coast Wood Carvers.

Your Invitation

The South Coast Wood Carvers meet at the Coquille Valley Art Center.

Monday 9-Noon
Tuesday 7-10 PM.

New people are welcome!
If you are interested, call
Don Capehart - 756-3415. ■



South Coast Wood Carver Lou Blomquist displayed his classic carvings inside the Garden House.



Visitors enjoy the serene beauty of the lily pond.



"Charles of Charleston" of the Bay Area Artists Association demonstrated his art for park visitors.

Summertime Scenes ☼ Concert and Carriages



Oregon Coast Music Festival Garden Concert in July



The Oregon Coast Music Festival Garden Concert, which featured the Celtic singing group "Golden Bough" drew a large crowd.



Olive Lougheed and Lola Lathrom (in booth) sold raspberry and chocolate sundaes. Also helping were (L-R) Chuck Lembke and Carl Siminow.

Horseless Carriages Toured Shore Acres in August



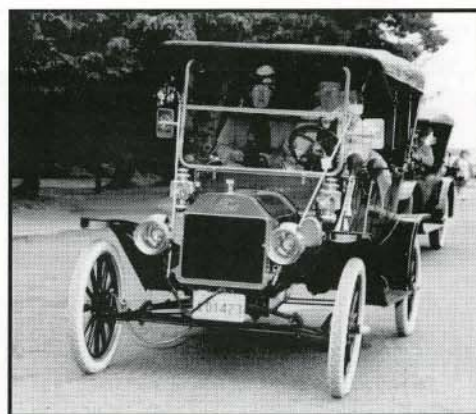
"Horseless Carriages" toured Shore Acres in August.



Organizer Vicki Morgan also dressed up for the occasion.



Bob Renner (L) talks with visitor while Helen and Bob Hopkins from Sacramento, Jerdice Booth from Portland and Mary Nunn from Coos Bay pose by the Memorial Fountain.



On the road again after enjoying fresh breads, juice and coffee served by Friends volunteers.



State Parks Co-op Conference

by Gregg Nelson, FoSA Board Member and Past President

The Annual State Parks Co-op Conference for 1999 was held in Bend. So what is a co-op conference, and why is it important to the Friends of Shore Acres?

I'm glad you asked...

Several state parks have "Friends of ..." groups that help support the park with volunteer efforts. Without the thousands of hours of help, plus the additional funds donated to maintain and improve some of the parks, the quality of the experience for visitors would suffer. There just isn't enough funding to do what the local support groups would like to accomplish at their local state park.

Take Shore Acres for example. The Friends of Shore Acres (FoSA) runs the Information and Gift Center, which provides a funding source for projects. Additional funds come from memberships and donations. The Friends also provide thousands of volunteer hours. All this time and money goes towards improving the park with more parking spaces, painting the inside of the house, adding new carpet and kitchen cupboards, cleaning the pond, adding a fountain, hosting monthly flower events, providing the holiday lights event, etc.

The Annual Co-op Conference is an opportunity for the FoSA to share experiences and information with other volunteer groups, and for them to teach us what works and what doesn't work at their state parks. It's a chance to brag



Friends of Shore Acres at 1999 Co-op Conference: (Front L-R) Gregg Nelson, Calum Stevenson, Larry Becker; (Back L-R) Kenn Kennedy, Carl Siminow, Betty Kennedy, Terry Richards and Andy LaTomme

about our accomplishments, and tell everyone how wonderful FoSA is. State Park personnel from over a dozen state parks also attend, and relate how important their Friends group is to their park.

The conference in Bend was typical. We attended training sessions to learn more about coordinating volunteer efforts, watched slide shows highlighting the parks with Friends groups, talked with vendors showing us products we could sell in our gift shop, ate our meals together, listened to several presentations, greeted new attendees (there is a little ceremony to welcome first time attendees), and participated in both an oral and silent auction (the money is used to help defray the cost of future conferences). State Parks also give awards to outstanding volunteers.

As with past conferences, there were optional trips or events to enjoy. This year the group went to the High Desert Museum one afternoon, and had an evening bonfire and sing-along under the stars.

Many of the current FoSA board members have attended past conferences. Board members who were able to attend this year included Kenn & Betty Kennedy, Terry Richards, Carl Siminow, and Gregg

Nelson. Everyone who has ever attended agrees that it is a valuable and rewarding experience. ■

"The Darker the Nights, The Brighter the Lights"

In recognition of the Friends of Shore Acres 1999 Co-op Conference
"2000: A Park Odyssey
Bend, Oregon



Award at Conference

Orchids - Gems of the Rain Forest



The Pacific Orchid Society's display in the Garden House is always a favorite of autumn visitors.

**Coming
this fall
Oct. 7
11-4**

**At
Shore Acres**



**Don't
miss it!**



Gregg Nelson and Merriel Stinchfield serve the Friends' traditional punch and cookies



Holiday Lights 1999

Thanks, 1999 Lights Pledge Supporters

☆ 5500 Lights ☆

The Timber Company - Oregon Operations

☆ 2000 Lights ☆

Azalea Acres Inc.

Coos Bay & North Bend Medicine Shoppe
Pharmacies

Hargens Construction Co. - Gary & Rody
Hargens

Jennie Jewell & Larry Blumberg

The Mill Resort & Casino

Weyerhaeuser

☆ 1500 Lights ☆

Cone 9 - Karen Blew & Staff

☆ 1000 Lights ☆

Abel & Swank Insurance Managers -

Harry & Francie Abel

Beauty & the Beast Antiques - Renee Majeski

Don & Cornelia Barnhart

Benetti's Italian Restaurant

Best Western Holiday Motel

Blue Heron Bistro - Wim & Trudi De Vriend

Bob's Appliance - Bob & Gayle DePeal

Capt. John's Motel - George Drozdowicz

Cardinal Employment Services

Cheryn's Seafoods

Cheslock Optical - Dr. Cheslock & Staff

Coastal Paper & Supply, Inc. -

Johanna & Bob Dillard

Dave's Pizza

Ed & Lynda Ellingsen - Nasburg & Company

ESA Beta Delta

Fine Home Resources - Garrett & Kathryn Neal

Clare D. Gove, CPA, P.C.

Hill & Hill Financial Services - Norm Hill

John Pierce - South Coast Radiologists

Life Care Center of Coos Bay

Memo & Betty - Brown's Studio

Menasha Corporation

McKay's Markets Inc.

Northwestern Mutual Life - Dick & Janice Vigue

Pacific Catastrophe, Inc.

Pacific Power

Prudential Seaboard Properties

Lon & Colleen Samuels

Anna & John Stephens

Dr. Ted Jay Terry & Staff

Ticor Title Insurance

J. W. White Painting - Jay & Melody White

☆ 750 Lights ☆

Huggins Insurance - Bob & Janet Huggins

☆ 500 Lights ☆

Adventure Kayak - Bob & Kayla Carr

Allstate Insurance - Phil Button

Art Connection

Tamra & Gene Atkinson

Judge Paula M. Bechtold & Robert D. Laird

Betty Kay Charters

BOS Telephone & Electronics, Inc.

Charleston Merchants Association

City Subs

Davis Oil Inc. - Harry Davis

George & Barbara Domenighini

Sam & Alice Freeman

Gold Coast Truck Repair -

Butch & Jacque Shields

Michael A. Gordon, CPA

Graham Oil Co.

Grocery Outlet - Gary Frazier & Pat Backman

Honda World - Judy Gilbert

K & K Sound Systems Inc.

Kinnee's Gifts & Shells - Pat Kinnee

Little Caesars Pizza - Kim & Jerry Briggs

Dick & Sue Maeyaert

Maguire Management Corp. -

McDonald's Coos Bay, North Bend, & Reedsport

Walt & Betsy McClure

Wayne & Carol Murray

Andy & Lynn Nasburg

North Point, Inc.

Northview Beach Cottage -

Richard & Susan Switzer

OMI - Coos Bay

The Oregon Connection

(The House of Myrtlewood)

Bob & Margaret Perkins

Ivone & Bob Pittam

Pony Village Motor Lodge

Reese Electric

Sea Basket Restaurant - Charleston OR

Security Bank

Sunset Bay Golf Course - Larry & Rosalie Hyatt

Tadpole Transport - Drain, OR

Tioga Rooms & Apartments Co.

Jim & Diane Verger

☆ 250 Lights ☆

Coos Head Garden Club

Weldon Laiche

Janet C. Stocks

The Firs Mobile Home & R. V. Park

The Whole Shebang!



An awesome full moon over Shore Acres

It took a little longer to take the holiday lights down this year. The weather decided to get even for its clear skies during the season. Our very, very dedicated volunteers worked for the most part in a deluge!

However, everything was down and packed away by mid January. In their usual fine fashion, park staff took care of taking down trees and temporary fences, dismantling the stage platform, and storing the stage and the large sculptures. Ellie Kinney, George Guthrie and their crew always do a superb job of helping with the Friends' projects. This year was no exception and we truly appreciate their efforts. ■

Thanks, volunteers!

Bill Breitmeyer, David & Shirley Bridgham, Shirley Champagne, Peter Downing, Fred Ehrman, Amanda Helmick, Maxine Johannesen, Gladys Johnston, Kenn Kennedy, Cappy Klein, Chuck Lembke, Wayne Murray, Connie & Gregg Nelson, Jeff Richards, Terry Richards, Ginger Sawyer, Donna & Frank Smith, Luke Soules, Dick & Irene Sund ☺

Information & Gift Center Volunteers

Jerry Baron * Juanita Bay * Rhoda & Babe Beauchemin * Shirley Champagne * Dona & Ken DeGraw * Dorothy Dinkins * Jim & Anna Mae Ferry * Mr. & Mrs. Fleming * Elmer & Diane Harring * Janet Horton-Payne * Lou & Sharon Kolkhorst * Mr. & Mrs. Loveland * Winnie Pitsenberger * Genii Robeson * Kay & Bob Valois * Nancy & Red Weybright



Holiday Lights at Shore Acres 1999-2000

Guest Book Analysis by Al and July Aslakson, Reedsport

Note: Not everyone who came to the park signed the guest book. Not everyone who signed did so legibly. Not everyone listed where they were from. And we've probably missed some.

International - 31 Countries

Argentina	Ontario	Ecuador	Finland	Italy	Tokyo	Norway	Malmö
Australia	Quebec	Quito	France	Japan	Kenya	Peru	Switzerland
Belgium	Saskatchewan	England	Germany	Chiba	Lebanon	Philippines	Taiwan
Canada	China	Bedfordshire	Eschweilen	Gunma-Icen	Nepal	Poland	Thailand
Alberta	Beijing	Beeston	Hanover	Maribo	Netherlands	Russia	Bangkok
British Columbia	Hong Kong	Croydan	Munich	Okinawa	Nymega	Broshnow	West Indies
New Brunswick	Costa Rica	London	Schuetzingen	Osaka	Spunemise	Spain	Antigua
Newfoundland	Denmark	Oxford	Indonesia	Soto City	New Zealand	Sweden	

US States (630 cities) - 45 States + DC

Alaska - 15	District of Columbia	Indiana - 3	Minnesota - 7	New Jersey - 5	Pennsylvania - 5	Washington - 60	Louisiana
Alabama - 3	Florida - 12	Kansas - 3	Missouri - 5	New Mexico - 5	South Carolina - 1	Wisconsin - 2	New Hampshire
Arkansas - 1	Georgia - 6	Kentucky - 2	Mississippi - 1	Nevada - 10	South Dakota - 6	West Virginia - 1	Rhode Island
Arizona - 12	Hawaii - 3	Massachusetts - 3	Montana - 9	New York - 5	Tennessee - 1	Wyoming - 2	Vermont
California - 146	Iowa - 4	Maryland - 3	North Carolina - 4	Ohio - 7	Texas - 13		
Connecticut - 2	Idaho - 15	Maine - 5	North Dakota - 1	Oklahoma - 6	Utah - 7	Missing States	
Colorado - 7	Illinois - 5	Michigan - 5	Nebraska - 3	Oregon - 202	Virginia - 6	Delaware	

☆ California, Oregon and Washington ☆

California ☆ 146 Cities

Antioch	Danville	Half Moon Bay	Los Alamitos	Napa	Pleasanton	Sacramento	Sunnyvale
Aptos	Davis	Hanford	Los Angeles	Nevada City	Pomona	San Bernardino	Tracy
Arcata	Del Norte	Hayward	Los Gatos	Newbury Park	Porterville	San Diego	Tujunga
Auburn	El Dorado Hills	Hemet	Los Osos	North Hills	Quincy	San Francisco	Turlock
Bakersfield	Elm Grove	Hillsborough	Marina	Oakdale	Ramona	San Jose	Ukiah
Benicia	Escondido	Hollister	Mariposa	Oakland	Rancho Cordova	San Luis Obispo	Union City
Berkeley	Eureka	Huntington Beach	Martinez	Oceanside	Rancho Santa Maria	San Rafael	Upper Lake
Blue Lake	Fairfield	Irvine	McKinleyville	Ontario	Raymond	San Ramon	Vacaville
Callahan	Fallbrook	Janesville	Merced	Orange County	Red Bluff	Santa Barbara	Vallejo
Carmichael	Fort Bragg	La Crescenta	Milpitas	Orangevale	Redding	Santa Clara	Venice
Carson	Fortuna	Larkspur	Mission Viejo	Oroville	Redlands	Santa Maria	Walnut Creek
Cedarpines Park	Foster City	Lemoore	Modesto	Palm Desert	Rialto	Santa Rosa	Wasco
Chico	Fremont	Little Rock	Monrovia	Palm Springs	Rio Vista	Saugus	Westminster
Citrus Heights	Fresno	Littlerville	Montebello	Palo Alto	Rocklin	Shasta	Windsor
Clear Lake	Garden Grove	Live Oak	Monterey	Pasadena	Rohnert Park	Simi Valley	Woodland Hills
Concord	Glendora	Lodi	Moreno Valley	Petaluma	Rosamond	Smith River	Yreka
Corona	Grass Valley	Loleta	Mt Shasta	Pixley	Roseville	Standish	Yuba City
Crescent City	Grizzly Flats	Lompoc	Murrieta	Placerville	Rowland Hts.	Stockton	Yucca Valley
Cupertino	Gualala	Long Beach					

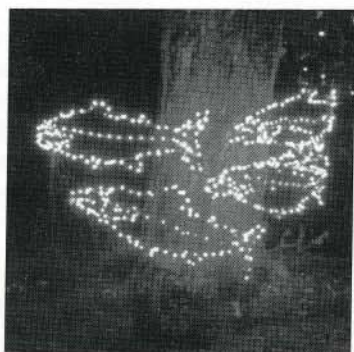
Oregon ☆ 202 Cities

Adel	Canyonville	Dora	Halfway	Lowell	Otis	Scio	Tigard
Albany	Cave Junction	Dorena	Harbor	Madras	Parkdale	Scottsburg	Tillamook
Allegany	Central Point	Drain	Harrisburg	Mapleton	Seaside	Toledo	
Aloha	Charleston	Dura	Hauser	McKenzie Bridge	Philometh	Shady Cove	Trail
Alsea	Chemult	Eagle Point	Hermiston	McMinnville	Phoenix	Sheridan	Troutdale
Amity	Cheshire	Echo	Hillsboro	Medford	Pilot Rock	Sherwood	Tualatin
Arago	Chiloquin	Elgin	Hubbard	Merlin	Pistol River	Siletz	Turner
Ashland	Christmas Valley	Elkton	Independence	Milo	Pleasant Hill	Silverton	Tygh Valley
Astoria	Clackamas	Elmira	Irrigon	Milwaukie	Port Orford	Sisters	Veneta
Aurora	Clatskanie	Estacada	Jacksonville	Molalla	Portland	Sixes	Vernonia
Azalea	Cloverdale	Eugene	Jefferson	Monmouth	Powell	South Beach	Waldport
Baker City	Columbia City	Florence	Junction City	Monroe	Powell Butte	Springfield	Welches
Bandon	Coos Bay	Forest Grove	Keizer	Monument	Powers	St Helens	West Linn
Beaver Creek	Coquille	Gardiner	Keno	Mt Vernon	Prairie City	Stanfield	Westlake
Beaverton	Cornelius	Garibaldi	Kirby	Mt. Angel	Prineville	Stayton	White City
Bend	Corvallis	Gilchrist	Klamath Falls	Murphy	Prospect	Sublimity	Wilderville
Blachley	Cottage Grove	Gladstone	Lake Oswego	Myrtle Creek	Rainier	Sunny Valley	Williams
Boardman	Crabtree	Glendale	Lakeside	Myrtle Point	Red River	Sunrise	Wilsonville
Boring	Crawfordsville	Gleneden Beach	Langlois	Newberg	Redmond	Sutherlin	Winchester
Bridge	Creswell	Glide	LaPine	Newport	Reedsport	Sweet Home	Winchester Bay
Broadbent	Crow	Gold Beach	Leaburg	North Bend	Riddle	Swishome	Winston
Brookings	Dallas	Gold Hill	Lebanon	Noti	Rogue River	Talent	Woodburn
Brownsville	Days Creek	Grants Pass	Lincoln City	Oakridge	Roseburg	Tenmile	Yachats
Burns	Depot Bay	Green Acres	Lone Brook	Ophir	Salem	Terrebone	Yamhill
Butte Falls	Dexter	Gresham	Lorane	Oregon City	Sandy	The Dalles	Yoncalla
Canby	Dillard						



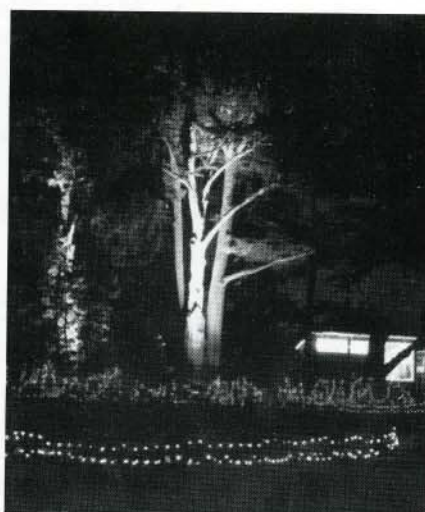
Guest Book Comments 1999-2000

- 5th Trip and it's better every time. Thanks to all - Lincoln City
- Great! We come every year! - Newberg
- Great job, keep up the good work. - British Columbia, Canada
- This is a tradition for us! - Bend
- A treat, worth the drive! - Ashland
- Warm hospitality - Sisters
- Wish we had it at Golden Gate Park! - San Jose
- A sight to behold! - Corvallis
- Spectacular, better than description - Eugene
- Year #2 - Bravo! - Seattle
- I get so proud of all your volunteers, This is awesome. - Salem
- Well worth the trip over - Eugene
- Worth the four hour drive - Garibaldi
- Better than chocolate! - Ashland
- WOW! - Yamhill
- Been to Benbow and Ferndale, California for the Christmas Lights. This is the most spectacular - Newport
- Fabulous! - Albany
- Wonderful lights, cheerful volunteers. - Florence
- Breathtaking - romantic! - Ashland
- We have never seen any more beautiful! - Salem
- Awesome! - Omaha
- Didn't think you could out-do last year -- you did! - North Bend
- As pretty in winter as it is in summer! - Lebanon



The new light sculpture, "Schooling" designed by Don McMichael and fabricated by Eric's Artistic Expression, drew excellent remarks from visitors.

- Thanks for the memories - Los Angeles
- Amazing! Absolutely amazing! - Albany
- It's amazing how you can coordinate all the people and stuff needed to do this! - Eugene
- SUPER-DUPER! - Indonesia
- Always spectacular. - Coquille
- Magical! - Reedsport
- Beautiful lights and house! - Lebanon
- Gorgeous! Thanks - Grants Pass
- Have more lights and stay away from commercial figures and designs - Roseburg



1,000 Watt landscape lights illuminated the giant Monterey cypress trees near the Information & Gift Center.

- Thanks for our wonderful tradition! - Bandon
- Indescribable!! - Eagle Point
- Not Christmas without a visit here! - Los Angeles
- Wonderful as always! A family tradition to come. - Gold Beach
- The amount of work that went into this is mind-boggling. - Albany
- Brightened our spirits. - San Francisco
- Beautiful. Love the whale! - Orem, UT
- Cookies were great, lights were spectacular!!! - Beaverton
- Wonderful! - Portland
- One of a kind! - Crescent City
- Outstanding, especially the whale sequence! - Cottage Grove
- Fantastic! Really enjoyed the walk! - Brisbane, Australia
- Yearly family tradition. Thank you. - Lorane, OR
- Wondrous, also much more than we expected. - Gresham
- Outstanding job. Will return - Gold Hill
- Thank you. Beautiful experience. - San Bernardino
- Love the library room - Salem
- This was worth the trip. Absolutely gorgeous! - Los Angeles
- 5 years in a row, great lights! - Bandon
- It takes time to sink in! Thank you. - McCall, ID
- Winter wonderland. Thank you. - Florence
- First class - great display - Medford
- Makes me proud to inform out-of-towners about this place. - Charleston
- I've told lots of visitors to come see the Gardens. This is my first with many more visits planned. - Newport

69 Groups

Note: A group was arbitrarily defined as "more than 10". Not all groups signed in as such. Some may have signed in more than once. Some people apparently put their age (or IQ) in the "number in party" column. Some people used the "number" column to sequentially number their sign-in on the page (1, 2, 3 etc). Buses and vans signed

in from Bandon, Florence, Medford, Seattle, Brookings, Albany, Coos Bay, Myrtle Point, Eugene, Reedsport, Roseburg, Olympia WA, Grants Pass, Charleston, North Bend, Gold Beach, Chetco Senior Tours, Redding CA, Josephine County Historical Society, and McMinnville (had the largest bus load with 45 people). ■

Washington ☆ 60 Cities

Aberdeen
Arlington
Battle Ground
Bellevue
Bellingham
Benton City
Bremerton
Brier

Camas
Chahalis
Enumclaw
Everett
Gig Harbor
Graham
Grapeview
Gray Island

Grayland
Index
Kelso
Kettle Falls
Kirkland
Lacy
Longview
Lynnwood

Marysville
Mercer Island
Mt. Vernon
North Bend
Oak Harbor
Olympia
Pacific Beach
Palouse

Pasco
Paulsbo
Port Angeles
Port Orchard
Port Townsend
Pullman
Puyallup

Renton
Richland
Seattle
Sequim
Shelton
Snohomish
Spokane

Sumner
Tacoma
Toutle
Tremonton
Tri Cities
Tumwater
Vancouver

Walla Walla
Wenatchee
Whidbey Island
White Salmon
Winlock
Woodland
Yakima



Holiday Lights 1999 Shakedown Meeting - What we talked about.

Some Stats and Info

- 52,000 visitors in 39 nights
- Guest Book Analysis: 21 clear or cloudy nights (no rain)
- Car Count Analysis: 13,152 total
732 (busiest night) 49 (slowest)
- 1700 Volunteer Passes given; Passes turned in: 787 (value \$2,361)
- 36,000 cookies baked; gone by Christmas; used 9,000 more
- 100 cases of apple juice; gone by Christmas; used 20 more cases
- Successful lights pledge campaign covered 84% of the cost of new lights
- Substantial discounts and support from Farr's, Lumbermen's, Kyle Electric, Reese Electric, Fred Meyer, Day Ship Supply, Rotor Rooter, Coastal Paper & Supply, Industrial Services, Vend West Services

Park Projects Completed

- Garden house painted
- Labor for kitchen remodel
- Labor for wiring projects
- RV Sites for park hosts at Shore Acres

Infrastructure for Holiday Lights & Garden Night Lighting

- Changed duplexes to 4-Plexes in 18 flower beds
- Installed additional underground wiring and circuits for NE and NW perimeter and garden east of pond

- All new surface extension cord system and splitters (13th year)
- Hedge stakes for lights on hedges

New things 1999 Season - Well received

- New Area Lighted (Pond E. Side Yard)
- New sculptures ("Schooling" and Squirrel)
- New location for leaping Orca and reliable new controller
- Lights on signs for trees and sculptures
- New style lighting on front stairs of Garden House
- Landscape lighting on huge trees north and south
- 4 more sponsored trees
- New lighted pergola
- Lights on fountain

Recommendations by Bridgham's

- More lights over more area: Equivalent of 225,00 in 2,000 Equivalent of 250,000 in 2001 (our 15th year)
- New section between Greenhouse and Garden House
- Improve bench lighting to include edges and corners.
- Landscape lights on large hedges (perimeter of pond area)
- Miniature lights on west perimeter canopy of rhodies and shrubs
- Improve stage area
- Lights on shrubs east and west of garden entrance (miniatures and safety lighting)

- Tube lighting on back porch and other areas where effective
- New sculptures (including Simpson sailing ship at east end of big field)
- Build permanent trellis at entrance for undersea garden; add more blue lights for water

Additional Suggestions at Meeting

- Improve ramp for handicapped access
- Have a sign re: no sugar in cider: also whether it's pasteurized
- Eliminate slippery surfaces at entrance
- More landscape lighting on big trees
- Light the birds in pond
- Define relationship between State Parks and Friends
- Better signing for donations
- Fix where kids fall at entrance (ramp near IGC) (comment "Kids fall when they are running!")
- Light pathways with footlights
- Tube lights for undersea garden water
- More information about the history
- Power / lights at observation building
- Both guest books at front table
- More lighting on big rocks around pond
- Decorate hosts' bathroom

Holiday Lights 1999 - Co-Chair & Lighting Design - David & Shirley Bridgham

Lights & Electrical Support

DiJulio Light Displays * Farr's True-Value Hardware-Jay Farr * Kyle Electric-Tom Kyle * Pacific Power * Reese Electric-George Reese

Button Makers * Judy & Al Aslakson

Poster Distribution * Robynn & Adam Reed

Food Storage & Delivery

Day Ship Supply - Bruce Day, John Leonard * Vend West Services - Lou Leberti * Terry Clinton

Set-up Lunch Hosts

Cappy Klein * Maxine Johannesen * Gladys Johnston

Oregon Parks & Recreation Department

Sunset Bay State Park * Shore Acres State Park * Andy LaTomme * Celia Sheridan * Dave Esch * George Guthrie * Greg Foster * Larry Becker * Maurice Wray * Rob Kilmer * Ellie Kinney Martial * Dennis Mauer * Rick Ripley * Calum Stevenson * Karen Wuethrich

Whales - Design by Don McMichael

Industrial Services (Construction) * Kyle Electric (Computerized Controllers) * Friends of Shore Acres Volunteers

"Schooling" - Design by Don McMichael

Fabrication by Eric's Artistic Expression * Lights stringing by Fred Ehrman, Shirley Champagne & David Bridgham

Squirrel - Design & Fabrication by Eric's Artistic Expression

Lights stringing by Cappy Klein

Pelicans - Design by Don McMichael

Fabrication - Eric's Artistic Expression * Pole Supports - Industrial Services

Undersea Garden

Frank Smith * David Bridgham * Don McMichael * Chuck Lembke * Industrial Services * Jim & Wendy Guernsey

Thanks also to:

Bandon Western World * Bay Area Chamber of Commerce - Kathi Joy * Bay Area Dispatch * Charleston Information Center * Coos Bay/North Bend Promotions Committee - Beve Saukko * Coquille Valley Sentinel * Curry Coastal Pilot - Charlie Kocher * Don Thompson Construction - Don & Dan Thompson * Industrial Services - John Guernsey * Industrial Steel & Supply * Johanna Dillard - Coastal Paper & Supply * Jim Collatt, Rotor Rooter * Gold Coast Security - Kenneth Burdett * KCBY TV - Dick McMahon * KHSN / KOOS / KBBR / KACW * KOBI TV * KSHR/KWRO/KBDN * Phyllis Love * Luis Velasquez * Myrtle Point Herald * North Bend Information Center * Oregon Coast Magazine - Judy Fleagle * Oregon Department of Transportation * George Bessey * Oregon Pacific Evergreens * Prime Time * Reedsport Courier * Register Guard * Security Bank * Southwestern Oregon Community College * The World *
and anyone whose name we have missed!



Cookies and Hot Apple Cider top the list of refreshments

Apple Juice - 100 cases donated!

Fred Meyer Coos Bay-Terry Schmidt

Cookie Bakers ~ 36,000 cookies!

* Shirley Champagne - Captain

Marshfield High School * North Bend High School *
 Johanna Bernstein * Jan Burger * Vivian Buzzard *
 Jane Capobianco * Janet Carr * Imogene Chester *
 Janet Coke * Leslie Cook * Mike Cook * Judy
 Cooper * June Cordeiro * Miguel Cordeiro * Patty
 Curtis * Timothy Drechsel * Melissa Drechsel * Vicki
 Earl * Judy Foster * Linda Gault * Jane Gigler *
 Dan Gordner * Sandy Gordner * Wanda Hanks *
 Marietta Howard * Grace Jensen * Cappy Klein *
 Tina Martin * Pat Parker * Betty Renner * Helen
 Shefstad * Carl Siminow * Debbie Taylor * Kay
 Valois * Liann Why * Pat Williams * Gina Young *
 Bob Young



Our "cookie captain" Shirley Champagne takes a moment from packing cookies in her van to pose for our photographer.



Deb Taylor packs Snickerdoodles.



Cookie bakers at North Bend High School



Cookie bakers at Marshfield High School's Harding Building.

Cider Spice

* Betty Renner-Chair

Bob Renner * Winnie
 Pitsenberger * Nancy
 Weybright * Barbara Martin *
 Shirley Champagne * First
 Presbyterian Church Kitchen
 courtesy of Pastor Dan Myers



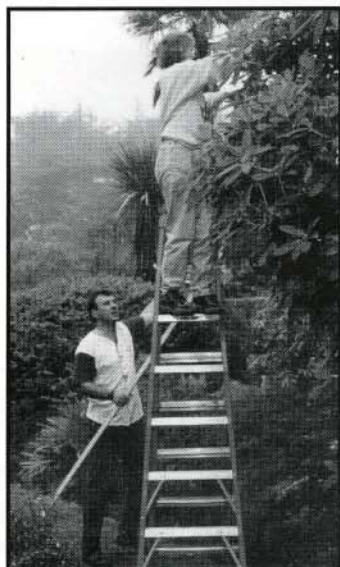
Cider Spice Cooks: (seated L-R) Winnie Pitsenberger and Nancy Weybright; (standing L-R) Shirley Champagne, Betty Renner (chair) and Barbara Martin.



Kay Valois puts a batch in the oven.



Getting ready . . .



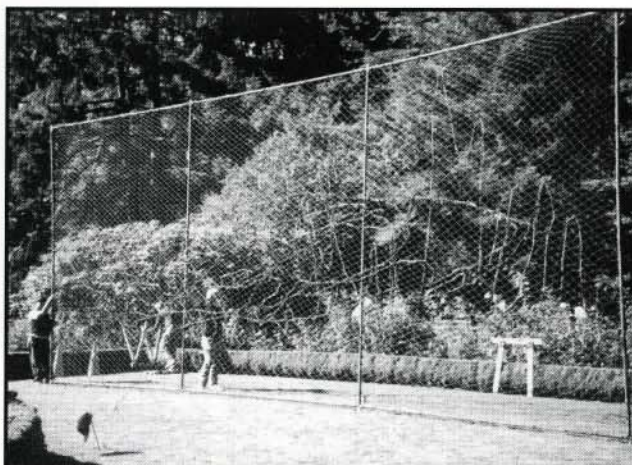
CB-NB Rotary Club President Roger Dixon and Cindy Hough, wife of Rotarian Jim Hough, string tall rhodies in the Oriental Garden.

Garden Christmas Trees

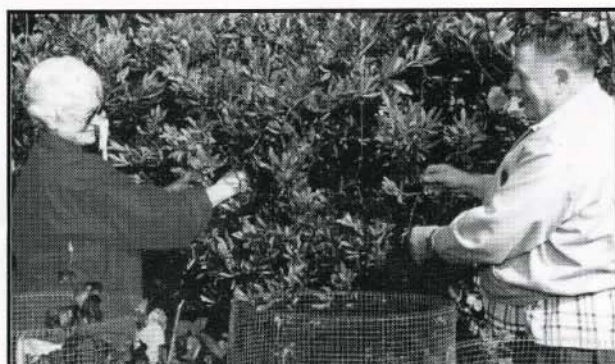
*donated by Dave's Christmas Trees -
Lots at Farr's & Pony Village*

Christmas Tree Sponsors

American Cancer Society
AM-VETS Post #10
Bay Area Hospital
Bonneville Power
Camp Fire Boys & Girls
Marshfield Band of Pirates
Medicine Shoppe Pharmacies -
Coos Bay & North Bend
Menasha Corporation
Mid-Coast Mustang & Ford Club
The Mill Resort & Casino



A popular change was the new location of the giant animated Orca whale display designed by Don McMichael. A new controller programmed by Tom Kyle kept it working perfectly all season.



Long time volunteers Ginger and Bingo Sawyer still enjoy stringing lights. They also get the house ready for host teams two nights a week.



Shirley Champagne and Kenn Kennedy have set the standard for stringing lights at "their corner."



New tree sponsor in 1999 - Mid Coast Mustang & Ford Club - decorated with unique ornaments including golden spark plugs.

Shirley,

Thanks so much for letting our club do a tree. It was so much "fun." We're already thinking of one for next year. Our club really does enjoy our time out there at Shore Acres. The hosting is the best time — meeting people from all over the country and hearing the praise for our Area, of this beautiful site, and to be part of this gives our club so much "pride" — Keep up the good work.

Sincerely,

Mid-Coast Mustang and Ford Club



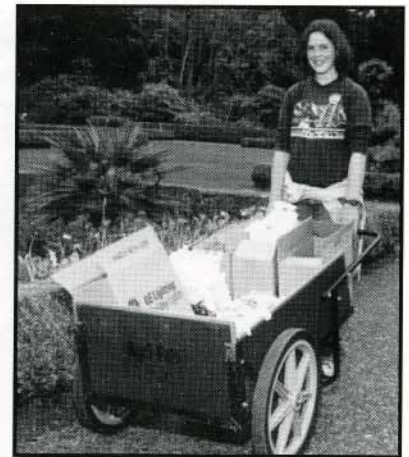
Friends and community volunteers make it happen!

Garden Lights Stringers, Stage, Sculptures

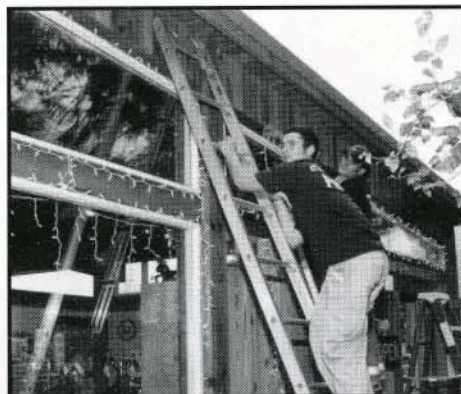
Gloria Allman * Barb Anderson * Jack Anderson * Beatrice Appleton * Jacquelin Arnsperger * David Barnhart * Barbara Bernhisel * Frank Bird * Mary Bjornerud * Joseph Bjornerud * Belloni Boys Ranch * Jane Capobianco * Mary Carlton * Shirley Champagne * Roger Collins * Maralyn Crandall * Clare D. Gove * Josh Daniels * Jay Dow * Joy Dow * Fred Ehrman * Alex Eiselein * Christopher Eiselein * Jenny Evelyn * Debbie Eversole * Shannon Eversole * Bettie Fegles * Jim Fegles * Kent Ferris * Kathleen Haley * Joanne Hansen * Don Harms * Janet Horton-Payne * Elizabeth Howard * Stacie Hughes * Steve Humphrey * Cody Jackson * Ben Jernstedt * Maxine Johannesen * James Johnson * Kathi Joy * Betty Kennedy * Kenn Kennedy * Angelique Kirk * Cappy Klein * Eric Kohler * Lou Kolkhorst * Sharon Kolkhorst * Julie Kramer * Marty Kulick * Wendy Labrousse * Lindsay Lemas * Chuck Lembke * Jerrie Lembke * Linda Lemos * Jayson MacLeod * Anita Martin * Betty Mault * Jessica May Owen * Joyce Moore * Leslie Mulkins * Wayne Murray * Mid-Coast Mustang Club * Gregg Nelson * Alishia Newman * Carla Newman * Patches Newman * Jacob Owen * Jennifer Owen * Kyle Owen * Brooks Ponto * Lisa Riley * Kristi Santivasci * Bingo Sawyer * Ginger Sawyer * Bev Schultz * Brenna Schultz * Chauncy Schultz * Erika Schultz * Jaime Schultz * Michelle Schultz * Rick Schultz * Carl Siminow * Dan Smith * Donna Smith * Frank Smith * Jennifer Smith * Jodie Smith * Melissa Smith * Cricket Soules * Luke Soules * Dick Sund * Karla Swanson * Dick Van Natta * Geoff Van Pulliam * Garry Van Pulliam * Billie Walters * Marilyn Warvie * Gail Wigler * Patricia Williams * Jane Willoughby



Oregon National Guard volunteers (L-R) Timm Slater, Brian Sullivan and Luis Gomez string tall shrubs on the west side.



Leslie Mulkins hauls new lights.



Charleston Fire & Rescue volunteers string lights on the Information & Gift Center.



Coos Bay Fire & Rescue volunteers (L-R) Jay Ringo, Jon Eck, Tina Eck, Stan Gibson and Steve Schneiderman.



Adam Reed hauls everybody's favorite frog.



Steve Schneiderman sets pelican on the chimney.

Lights on Garden House, Gift Shop, Pelican on House

CB Fire & Rescue Volunteers: Steve Schneiderman * David Ringo * Jon Eck * Tina Eck * Stan Gibson * Chuck Hanners
Charleston Fire & Rescue Volunteers: Rusty Shield * Patty Lilienthal * Jessica Shield Robert Sandusky * Jeremy Shield

Oriental Garden & Pond

Coos Bay North Bend Rotary Club * David Bridgham * Kris Cassel * Harry Davis * Danielle Dixon * Desiree Dixon * Roger Dixon * Tom Graham * Cynthia Greaves * Jane Hatfield * Chuck Holloway * Tara Holmes * Cindy Hough * Gretchen Hough Jim Hough * Paul Hough * Dick McMahon * John Miko * Andy Nasburg * Brian Newton * Marlee Newton * John Pierce * Frank Ramer * Timm Slater * Greg Stevens * Angela Van Burger * Evynn Van Burger * Kayty Van Burger * Boyd Williamson * Tom Willisroft

West Side Landscape Area

Oregon National Guard - Timm Slater * Louis Gomez * Brian Sullivan * Scott Churchill * Donald A. * Martin Schwartz * Joel Owens



Shore Acres Garden House - an essential part of the holiday lights

The Friends completed a major kitchen remodeling project in 1999. All new cabinets, new floor, vinyl, dishwasher, microwave, range, and lighting made the kitchen a very pleasant place to be during the holiday lights. Substantial discounts by Lumbermen's, Farr's and

Kyle Electric plus the hard construction work by Larry Becker, Greg Foster, Dave Esch, Calum Stevenson, and Karen Wuethrich made the project possible. A big thanks to all! ■



The upstairs study is a favorite of many visitors.



Robynn Reed, chair of House Decorations, and her new kitty take a moment to pose for photographer Luis Velasquez.



Bed & Breakfast winners sleep in this bed.



Each year, "kids" young and old alike look forward to seeing Santa in the bathtub.

Garden House Theme - "Shore Acres - A Timeless Treasure"

• Robynn Reed - Chair

Adam and Mike Reed * Friends of the North Bend Library * Janeane Murray & Patti Lilienthal * Circle of Friends Crafters Mall & Gift Shop - Dottie Olson * Art Connection - Coni Stroud & Rondi Potter * Melissa & Harold Thompson * Eleanor Chambers * Sherry Prosa * Kozy Wood Heating - Earl, Nadine & Cody Croucher, Charlie West, Ken Ocobock * John McKeown * Pat & Mike McKeown * Carl Siminow * David & Shirley Bridgham * Craft World * Rich Hopkins * Dayton, Denise, Dayton & Danielle Hughes * Cedar Electric - Gil & Linda Binder * Grant & Rae Lea Cousens * Carl Van Natta * Ellie Kinney-Martial * Shutter's Creek Inmate Crew * Shary & Bill Werdell

Getting the House Ready for the host teams is a big job.

A big thanks to our house openers: Betty & Bill Mault * Ginger & Bingo Sawyer * Irene & Dick Sund * Cappy Klein * Maxine Johannesen * Gladys Johnston * Robynn Reed * Kay Valois * Shirley Bridgham



Happy Hosts and Excellent Entertainers

HOST TEAMS

November

- 25 Thanksgiving - Friends of Shore Acres and Oregon South Coast Active Single Friends
- 26 Bay Area Optimist Club
- 27 Southwestern Oregon Community Action
- 28 Bay Eye Clinic, Bay Optical & Pacific Optical
- 29 St. Monica Catholic Church
- 29 Miss Coos County Scholarship Program Board
- 30 Bay Area Jaycees

December

- 1 Menasha Corporation
- 2 The Bay Area Bonsai Society
- 2 Soroptimist International of Coos Bay
- 3 Hillcrest and Sunnyhill Schools
- 4 Occidental #45 Order of Eastern Star
- 4 Coquille H.S. Key Club & Kiwanis Club
- 5 HOG (Harley Owners Group)
- 6 Boy Scouts
- 6 Camp Fire Boys & Girls
- 7 MHS Class of '40 & Friends
- 8 Zonta Club of the Coos Bay Area
- 9 Coos Bay-North Bend Rotary Club
- 10 Umpqua Discovery Center
- 10 AM-VETS Post #10 Coos Bay
- 11 SWOSR (Southwest Oregon Street Rods)
- 12 Mid-Coast Mustang & Ford Club
- 13 Bay Area Rotary Club
- 14 American Cancer Society-Coos County Resource Center
- 15 North Bend Education Association
- 15 American Business Women's Association
- 16 Bay Area Hospital
- 17 Marshfield High School Student Council
- 18 Coquille River Broadcasters
- 19 Coos Bay Yacht Club
- 20 Pacific Home Care
- 21 Life Care Center of Coos Bay
- 22 North Bend United Methodist Church
- 22 Western Bank
- 23 A.B.A.T.E. of Oregon
- 24 Friends of Shore Acres
- 25 Friends of Shore Acres
- 26 Southwestern Oregon Rose Society
- 27 Oregon Parks & Recreation Department
- 28 Coos Bay Fire & Rescue
- 29 C.A.E.O.P (Coos Association of Educational Office Professionals)
- 29 University Center Southwest
- 30 Boy Scouts Troop #156
- 30 Coos Shoreline Prospective Sweet Adelines
- 31 Friends of Shore Acres

January

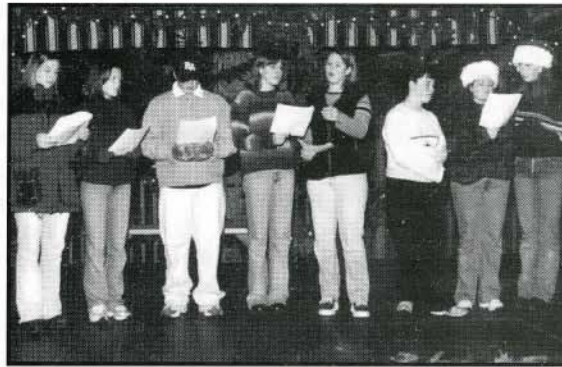
- 1 Southcoast Cruisers
- 2 Terry Travel
- 2 OMI (Operations Management Intl.)



Western Bank's Dana Blaser serves hot cider, cookies, punch and coffee.



Western Bank's Karen Kime greets visitors.



Marshfield High School Carolers (L-R) Tina Saling, Jo Boatright, Aaron Huff, Danielle McFeron, Shannon Eversole, Vanessa Loper, Janet Morrison & Lindsay Nyseth.



Janet Morrison & Lindsay Nyseth from MHS



Carolers from the Bay Area Foursquare Church are led in song by Pastor John and Anna McCulla on the guitar.

Entertainment

First Presbyterian Church North Bend * Melody Caldera * Lighthouse Church * Five Forgiven * Boy Scouts #151 * Emmanuel Episcopal Church * Marshfield High School Girls Group * Charleston Community Church * Sweet Adeline Chorus * Millicoma Band * International Club * North Bend High School Choir * Marshfield Band * Pieces of Silver * Heritage Place * Marshfield High School Girls Group * Bay Area Foursquare Church * United Methodist Church



Thanks, Members 2000

Life

Martha Blair, Sweet Home
 Jack & Ann Daubenspeck, Westlake
 Hargens Construction Co. -
 Gary & Rody Hargens, Coos Bay
 Alice & Jim Layport, Coos Bay
 Wanda Pike Rees, San Rafael
 Sause Bros. Ocean Towing -
 Dale Sause, Coos Bay
 Jack & Carol Shinniger, North Bend
 L. L. "Stub" Stewart, Eugene
 Merriel Stinchfield, North Bend

Benefactor

Forton & Carla Christoffer, Coos Bay
 Rosemary Crafton, Coos Bay
 Kent & Jill Hoddick, Portland
 Steve & Jan Hooper - North Bend
 Life Care Center of Coos Bay -
 Bob Papworth, Coos Bay
 Bob & Jean Macy, Coos Bay
 Pacific Power, Coos Bay/Coquille Dist. Office
 Bob & Margaret Perkins, Coos Bay
 Ted & Carolyn Terry, Coos Bay
 Stu & Shay Weinger, Coquille
 Bill & Shary Werdell, Eugene
 J. W. White Painting,
 Jay & Melody White, Coos Bay

Sponsor

Jim Arbuckle, Coos Bay
 Al & Judy Aslakson, Reedsport
 Judge Paula Bechtold & Robert Laird
 BOS Telephone & Electronics,
 Oscar & Pat Johnson, Coos Bay
 David & Shirley Bridgham, North Bend
 Ivan & Nancy Brooks, Oregon City
 Lily M. Busick, Coquille
 Ernest & Margaret Carlson, Sublimity
 Sue & Fred Ehrman, Coquille
 Sam & Alice Freeman, Fairfield, CA
 Robert & Dorothy Gillett, Coos Bay
 Clariece Graham, San Francisco
 Virginia Grant, Coos Bay
 Rich & Jody Hamel, Bandon
 Eunice (Kay) Harless - North Bend
 Dick & Vicky Henschel, Concord, CA
 Tom & Gloria Hillstrom, Coos Bay
 Wilbur & Judy Jensen, Coos Bay
 Jerry & Jane Kirkpatrick, Moro
 Don Larsen, North Bend
 Carol & Mike Lucas, Concord CA
 Betty Luzovich, Aromas, CA
 Dr. & Mrs. Philip Morgan, Coos Bay
 North Bend Garden Club, North Bend

George & Betty Phipps, Coquille
 Reese Electric Inc., North Bend
 Karl & Alice Schmidt, Coquille
 Jim & Lorna Shivley, Bandon
 Frank & Donna Smith, North Bend
 Michael & Barbara Taylor, North Bend
 R. Georga Taylor, Coos Bay
 Harold & Marguerite Wrigley, Coquille
 Don Wyatt, Coos Bay

Patron

ABWA-Coquille Valley Chapter
 Pearl Affholter, Eastside
 Gene & Tamra Atkinson, Dahlenoga GA
 William & Patricia Bauer, Eugene
 Don & Richie Bock, Coos Bay
 Ken & Avadna Boshears, North Bend
 Gilbert & Maxine Braulick, Coos Bay
 Robert & Beverly Brune, Fresno
 Georganna Casey, Coos Bay
 Ken & Imogene Chester, Coos Bay
 Sarah M. Cowperthwait, Waldport
 Pete & Carole Dawson, Coos Bay
 Marlene M. Dolezal, Puyallup WA
 Helen Doving, Coos Bay
 Jay & Joy Dow, North Bend
 Ray & Rosella Duskin, Coos Bay
 Bob & Doris Emmett, North Bend
 Helen Ferguson, Coos Bay
 Robert R. Graham, Eugene
 Tom & Kotch Graham, North Bend
 Ms. Lavinia Guntle, Coos Bay
 Frank & Becky Hatcher, Portland
 Hauser Garden Club, Lakeside
 Bruce & Fran Hemm, Eugene
 Grace E. Jensen, Coos Bay
 Dennis & Supaporn Johnson, Central Point
 Margaret H. Johnson, Roseburg
 Monita Johnson, North Bend
 Kathi Joy, North Bend
 Dr. & Mrs. William P. Kean, Coos Bay
 Stanley R. Klenke, Canyonville
 Bonnie Koreiva, Coos Bay
 David & Florence Kuhns, Eugene
 Lynn A. Larsen, Portland
 Steve & Marietta Laws, Yreka
 Charles Lembke, Coquille
 Bill & Marge Levens, Prineville
 Robert E. Mathis & Diane Burrell, Coos Bay
 Richard & Martha Moehl, Coos Bay
 Andy & Lynn Nasburg, Coos Bay
 Sid & Norma Norris, Coos Bay
 Jim & Betty Ohman, North Bend
 Don & Luana Perry, Medford
 Rosemary Pullins, Coos Bay

Irene Quick, Coos Bay
 Donna Rabin & Steve Richardson, Coos Bay
 Mike, Robynn & Adam Reed
 Virgil & Brownie Ruggles, Coos Bay
 Linda Ryer, Seattle
 Sonny & Helen Shefstad, Coos Bay
 Clair L. Shirey, Eagle River AK
 Clarence & Elberta Smith, Coos Bay
 Mr. & Mrs. R.R. Stephens, North Bend
 Richard & Irene Sund, North Bend
 Barbara Taylor & Steven Fowler, North Bend
 Lyn & John Topits, Coos Bay
 Nancy & Red Weybright, North Bend
 Larry & Patricia Zeh, Florence

Family

Dan & Barbara Acker & Family, Salem
 John & Barbara Anderson, Coos Bay
 Rich & Susie Armstrong, North Bend
 Bud & Barbara Baumgartner, Sweet Home
 BP & Rhoda Beauchemin, Coos Bay
 Larry & Barbara Becker, Coos Bay
 Reese & Carol Bender, Coos Bay
 Valerie K. Boggs, Roseburg
 Patricia Ann & Bill Borchert, Coos Bay
 Frank & Opal Bryant, Coos Bay
 Don & Margaret Burdg, Coos Bay
 George & Gladys Button, Coos Bay
 Arthur & Rose Clark, Eastside
 Roger & Laura Collins, Coos Bay
 Jim & Rita Crooker, Coos Bay
 Karen & Peter Crosby, North Bend
 William & Heide Cummings, Coos Bay
 Rick & Liz Curtis, North Bend
 Archi & Jim Davenport, Coos Bay
 David & Joanne Dempster, South Beach, OR
 Kent Ferris, Coos Bay
 Anna Mae & Jim Ferry, Coos Bay
 Chris & Donna Flammang, Coos Bay
 Chet Haliski & Kay Lorence, Coos Bay
 Duane & Sally Harmer, North Bend
 Mr. & Mrs. Willard Hayne, North Bend
 Johannes & Anneliese Hoogeveen, Coos Bay
 Kirk Hutchinson, Amity
 Tom & Dee Jackson, North Bend
 Sally & Dave Jones, Coos Bay
 Karla & Donna Kaudel, Coos Bay
 Kenn & Betty Kennedy, Coos Bay
 Mike & Penny Kielman, Eagle Point
 Lou & Sharon Kolkhorst, Coos Bay
 Douglas & Laurie Kroger, North Bend
 Bill & Bev Large, Albany
 Robert & Carol Lee, Jr., North Bend
 Mr. & Mrs. Harry Lougheed, North Bend
 Don & Joan Lynam, Bandon



Family (continued)

Trish Mace & Richard Emlet, Coos Bay
 Bill & Betty Mault, Coos Bay
 Burt & Sara Meglitsch, Vancouver, WA
 Ron & Kathy Metzger, Coos Bay
 Gail Mueller & Paul Poresky, Myrtle Point
 Rev. Thomas & Esther Murdock, Coos Bay
 Wayne & Carol Murray, Coos Bay
 Gregg, Connie, Erika, & Travis Nelson,
 Coos Bay
 Dennis & Kathy Netter Family, Coos Bay
 Ted & Nadine Oleson, Roseburg
 Barbara Olson, North Bend
 Randal Lee O'Toole & Vickie Ellen Crowley,
 Bandon
 Bruce & Carol Oxley, Ashland
 Mike Perkins & Carol Ventgen, North Bend
 Bob & Betty Plant, Coos Bay
 Carole Quick, Coos Bay
 Frank & Glenda Ramer, Coos Bay
 Toni & Bill Rempelos, North Bend
 Robert L. & Betty Renner, Coos Bay
 Al & Sally Roberts, North Bend
 Bob & Eleanor Ross, Central Point
 Bill & Joan Russell, Bandon
 Ginger & Bingo Sawyer, Coos Bay
 Henry & Mary Scheirman, North Bend
 Don & Shirley Sell, North Bend
 Russ Shaddix, Arcata CA
 Steven & Eva Shimotakahara, North Bend
 Theo & Virginia Stanley, Bandon
 Ed (Doc) & La Veda Stevenson, Coquille
 Ed & Judy Swenson, Bandon
 Ben & Pat Titus, North Bend
 William J. Townsend, Port Townsend, WA
 Bob & Kay Valois, Coos Bay
 Luis & Josefina Velasquez, North Bend
 George & Marie Winterscheid, North Bend

Individual

Jay Anderson, Portland
 Marion Babcock, Coos Bay
 Juanita Bay, Coos Bay
 Patricia B. Bearden, Newport
 Mark Bilodeau, Lebanon
 Jackie Campbell, Coos Bay
 Patricia R. Carpenter, Bandon
 Lynn Carroll, Coos Bay
 Shirley Champagne, Coos Bay
 Marlene Cleland, Lakeside
 Pat Cranmer, North Bend
 Bernd Crasemann, Eugene
 Sally Dennis, Roseburg
 Dorothy L. Dinkins, Coos Bay
 Helen Feldmeier, Davis CA
 Florrie Fox, North Bend
 Shirley Gitchell, Coos Bay
 Florence R. Grant, Milwaukie OR
 Patricia F. Griffin, Bandon
 Mrs. Conrad Holland, Reedsport

Flashback

Friends of Shore Acres
 Park Notes by Andy LaTomme
 FoSA Newsletter Feb. 28, 1989

"It looks like the 'instant tradition' will be around for years to come, given the success of the 1988 edition of Christmas at Shore Acres.

At a recent statewide park managers and supervisors meeting, I was approached by one of the region supervisors from eastern Oregon who said that he thought our Christmas celebration was the best idea ever for attracting off season park visitors." ■

A & V Hood, Charleston
 Linda Huff, Myrtle Creek
 Connie Huntsman, Coos Bay
 Mrs. Marilyn Ingram, Myrtle Point
 Gladys Ivy, Coos Bay
 Maxine Johannesen, Coos Bay
 Gladys Johnston, Coos Bay
 Lupe Jones, Coos Bay
 Ellie Kinney-Martial, Coos Bay
 Cappy Klein, Coos Bay
 Carol J. Knapp, Coos Bay
 Lori Metschan, Black Diamond WA
 Carol Moore, North Bend
 Mary Novak, Coos Bay
 Adele O'Boyle, Florence
 Clare O'Neal, Florence
 Virginia Paczesniak, Coos Bay
 Winnie Pitsenberger, Coos Bay
 Mrs. Hazel Pletchmy, Springfield
 Barbara L. Prince, Brookings
 Helen Ray, Coquille
 Terry Richards, North Bend
 Alice Richter, Coos Bay
 Monica Robertson, Coos Bay
 Earline Rose, Coos Bay
 Mary Ann Rose, North Bend
 Arthur Schuldt, North Bend
 Geneva Selin, Coos Bay
 Celia Sheridan, Coos Bay
 Carl Siminow, Coos Bay
 Charlotte S. Skinner, North Bend
 Linda Stanley, Coos Bay
 Glenna Stone, North Bend
 Mrs. Donna M. Sturdivan, North Bend
 Mark E. Surmann, Lincoln, NE
 Richard K. Van Natta, Coos Bay
 Stanley H. Wilson, Coquille
 Caroline M. Wright, North Bend
 Nancy Yonker, Coos Bay

Friends of Shore Acres 2,000-2001 Projects*

* Subject to change

- ◆ Operation of the Information & Gift Center
- ◆ Sponsor a variety of "flower days"
- ◆ OCMF Concert in the Park in July
- ◆ Interpretive coast trail brochure
- ◆ Interpretive panels for Simpson Reef & Shell Island Overlook
- ◆ Assist in the construction of a Gazebo on the east side of formal garden.
- ◆ Replace the exposed aggregate concrete and 2"x 6" decking material in the interpretive entrance.
- ◆ Complete the wiring upgrade of the formal garden.
- ◆ Complete the Memorial Display.
- ◆ Remove texture from ceilings in the Garden House.
- ◆ Repair chimney on Garden House.
- ◆ Remove, re-slope, and replace concrete walkway at the entrance of the Garden.
- ◆ Assist in the funding of an interpretive ranger position at Simpson Reef, Cape Arago, and Sunset Bay on intertidal education programs for the summer of 2000.
- ◆ 14th annual Holiday Lights & Open House at Shore Acres Nov. 23 - Jan 1

Membership

Friends of Shore Acres, Inc. is a private non-profit organization with tax-exempt status.

- Membership entitles you to a 10% discount in the Information & Gift Center.

Membership categories

Individual ~ \$10	Family ~ \$15
Patron ~ \$25	Sponsor ~ \$50
Benefactor ~ \$100	Life ~ \$500

NO FORM NECESSARY

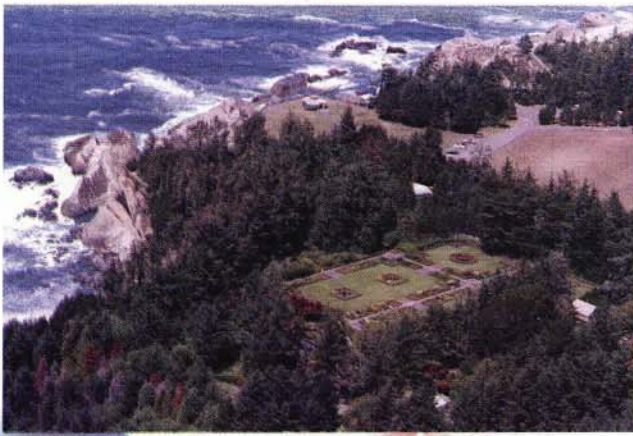
- If you wish to be a member of Friends of Shore Acres, it's very easy. Just send a check or money order to Friends of Shore Acres, Inc., PO Box 1172, Coos Bay, OR 97420.
- OPRD Parking Permits are available (by mail) for \$20 to new and renewing members. Up to 2 additional permits (\$5 each) are also available to cars under the same ownership.

If you order permits, be sure to include your license plate number/s.

- Your mailing label shows a category ending with an "0" if you are current until Dec. 31, 2000.

QUESTIONS? 541-756-5401





Year Round Beauty

SHORE ACRES STATE PARK



Friends of Shore Acres, Inc.
P. O. Box 1172
Coos Bay, OR 97420

CHANGE SERVICE REQUESTED

NON-PROFIT ORG.
BULK RATE
U. S. POSTAGE
PAID
COOS BAY, OR 97420
PERMIT NO. 305

