



Shore Acres State Park
Before Friends - 1986

Album 2



Shirley Bridgham

How Friends of Shore Acres Happened

In 1986, the Communication Arts Group at Southwestern Oregon Community College decided to tell the story of Shoreacres and Shore Acres State Park by creating a multi-image slide show to be shown at the 5th annual Multi-Image Festival in September. After the Festival, Shirley Bridgham asked Andy LaTomme, manager at Shore Acres State Park, if the park wanted a copy. He said yes. Not long after, Andy asked Shirley and her husband David if they would like to help start a Friends group – a non-profit corporation in association with state parks. They said yes.

An organizational meeting was held on December 4, 1986 at 7:30 pm in Room 12 of Sumner Hall on the campus of Southwestern Oregon Community College. In attendance were Andy LaTomme, John Bergen, Mike Bodkin, David and Shirley Bridgham, John Garner, Marty Giles, George Guthrie, Dick Hansen, Ron Hjort, Tony Mason, and Karen Wuethrich. On that important night, Friends of Shore Acres, Inc. in cooperation with Shore Acres State Park began a long journey of success.

The Shore Acres Story was shown in slide format to thousands of visitors for years, then transferred to VHS tape for easier showing. In 2006, it was transferred to DVD. In 2013, it was transformed again, this time with additional photos courtesy of Caitlin Day, James McDermott, Sunset Bay State Park and the Coos Historical and Maritime Museum. Special thanks goes to Phillip Bridgham for rescuing the original sound track.

The program is about Asa Meade Simpson and his son Louis Jerome and the history of the magnificent estate that Louis called Shoreacres. It continues with what Shore Acres State Park was like in 1986 when the slide show was created. ■



Ward Robertson

Aerial and Gardens — 1986



Shirley Bridgham



Shirley Bridgham

About the Friends' Albums

by Shirley Bridgham - 2014

It's time to preserve the Friends' photos and clippings using the following:

- Epson Expression 11000XL Scanner
- Adobe PhotoShop CS-3
- Adobe InDesign CS-3.
- Epson Presentation Paper - Matte
- Epson Premium Photo Paper - Glossy
- Epson Stylus Photo R2000 Printer

I will also save the album pages as PDF files. ■



Ward Robertson

Aerials - 1986



Ward Robertson

Album 2

Note from Shirley Bridgham - September 2014



Friends of Shore Acres, Inc. was founded on December 4, 1986.

1st annual year Dec. 4, 1986 - Aug. 31, 1987

1st Birthday - Dec. 4, 1987

1st Christmas Lights - Dec. 11, 1987

2nd annual Year - Sept. 1, 1987 - Aug. 31, 1988

2nd Birthday - Dec. 4, 1988

... and so on. The annual year runs from September of one year to the end of August of the next year.

What an amazing journey it has been for David and me since 1986. Little did we know when we, the Friends, decided to bring more attention to Shore Acres State Park, by stringing some lights to celebrate Christmas in 1987, we would begin an awesome adventure that continues to this day.

So many volunteers, so many supporters, so many visitors, such a great board of directors, and always so much excellent cooperation from park managers, rangers and staff - all combine to make Friends of Shore Acres, Inc. one of the most successful non-profit Co-ops in the state of Oregon.

All these years, Friends of Shore Acres, Inc. has been truly blessed to remain an all-volunteer organization. It has made it possible to accomplish so many interpretive and physical development projects at Shore Acres. Visit our Information & Gift Center and pick up one of our membership brochures and you will find an extensive list.

I've been privileged to create and produce our slide shows, DVDs, and Newsletters and Journals. Not to mention, designing the lights display and seeing it come together like theater every season. Yes, it's a lot of work, but it's also a lot of fun. David has the challenge of designing and producing new sculptures and maintaining the old ones. When we read the comments in the guest books, we always get enthused to start the next season.

This year, I'm starting a project to preserve the Friends' archives in physical albums — this is the first album — backed up in a digital format for easy viewing by many. We have many photos, news clippings and other materials that will be included in the albums.

As I've started going through the archives, I'm reminded of how FoSA has grown and prospered in order to help Shore Acres State Park, Sunset Bay State Park and Cape Arago State Park. What a great reminder of why we do what we do. Our hope is that in the future, others will experience and enjoy the same opportunities. ■

Note from David Bridgham - September 2014

The following pages (and Albums) are a chronology of the efforts of Friends of Shore Acres, Inc., but even more than that, tell the tale of the enormous support that the Friends have enjoyed from our regional communities.

This was a movement whose time had come. The Oregon State Legislature had passed "Enabling" Legislation allowing non-profit 501(c)3 organizations to adopt a specific State Park to provide educational and interpretive services to its visitors. Well that's the dry legislative speak for find a core user group that loves that park and let it nurture and care for it.



Shore Acres State Park, 13 miles from town, is the touchstone that we all bring our friends and visitors to when we want to show off the beauty of the Oregon south coast. There was a built-in and pent-up desire to shower this special place with community pride and needed TLC. Outreach to our communities started with the planning sessions with FOSA Board members and volunteers. Dreaming of what could be, planning on now and the future.

Holiday Lights at Shore Acres is a night time interpretation of the formal English style gardens and the reflecting pond at the oriental garden. Historically, the original Simpson mansion built on the bluff at the stone wall, was a Christmas present to Louie Simpson's wife Cassie. From the very first lighting event we recognized the importance to the communities to open the Garden House for our visitors and start building traditions. After 27 annual lightings it thrills me to hear from adults with their young family when they tell us they came to see the lights as kids and now they're bringing their families to grow the tradition.

An important cornerstone to the Holiday Lights tradition is the consistency of our focus on major themes. We have stayed true to who we are and where we're at, interpreting the gardens with flower-lights, sculptures that are inspired by what's found in the gardens as well as many marine related sculptures. The Garden House is beautifully decorated with an old time (Simpson era) theme that fits this historic gardener's cottage.

There are those certainties in life - like the tide at our ocean's shore, the Bay and its tributaries - migrating geese, and the Holiday Lights at Shore Acres. When I see or hear a migrating flock of Canadian Geese I get an itch I can only scratch by stringing lights at Shore Acres.

You will see as you turn these pages that the secret sauce has always been to engage our community, give credit and ownership where deserved, and always try to improve this place that we all love. ■

Friends of Shore Acres, Inc.

Founded December 4, 1986



*"The purpose of Friends of Shore Acres, Inc.
is to participate in interpretive, educational,
and physical development programs
with Sunset Bay Management Unit."*

FoSA Bylaws

Friends of Shore Acres, Inc.

FRIENDS OF SHORE ACRES ORGANIZATIONAL MEETING MINUTES

A meeting was held on December 4, 1986 at 7:30 pm in room 12 of Sumner Hall on the campus of Southwestern Oregon Community College. In attendance were Andy LaTomme, John Bergen, George Guthrie, Karen Wuethrich, Marty Giles, Ron Hjort, Mike Bodkin, John Garner, Shirley Bridgham, David Bridgham, Dick Hansen and Tony Mason. Andy LaTomme opened the meeting by giving background information about the establishment of non-profit corporations in association with state parks.

Mike Bodkin reviewed the legal steps necessary to establish a corporation and to certify it as tax-exempt under federal and state laws: fees to be paid, legal liability of corporation members and the formation of an initial board of directors.

Discussion followed on the details of the above presentations. The group agreed that a preliminary date of June, 1987 was a goal for establishing the tax-exempt status of the organization and that the group should forego any solicitation of funds until this status has been obtained.

Those present introduced themselves to the group and completed a sign-up sheet with their names and addresses. Each person was asked if he or she desired to serve on the initial board of directors. All except Andy LaTomme, Ron Hjort, Karen Wuethrich and Mike Bodkin responded "yes."

Some discussion followed about the number of state park employees to be allowed to serve on the board at any one time. It was generally agreed that no more than 1/4 of the board should be composed of state park employees, however formal action on this was deferred until bylaws are adopted. It was agreed that the Sunset Bay State Park district manager would serve as a non-voting member of the board. There was some discussion about this and it was understood and agreed that the group would not undertake any projects without the approval of the district park manager or his designee.

Nominations were opened for chairman. Dick Hansen and John Bergen were nominated and declined. John Garner was nominated and unanimously elected. He conducted the balance of the meeting.

A motion to name the organization the "Friends of Shore Acres, Inc," was proposed, seconded and passed.

Mike Bodkin was named to act as legal agent for the Friends of Shore Acres (hereafter referred to as the "Friends") and was thanked for his work thus far. Discussion followed regarding the purposes of the Friends as required for the incorporation papers.

Mike Bodkin stated that he would use wording from a similar organization's application and that he expected the incorporation papers would be returned by the next meeting.

Friends of Shore Acres
December 4, 1986
Minutes - page 2

It was decided the scope of the organization would be discussed when bylaws were presented for adoption at a later meeting.

There was discussion about membership in general, voting vs. non-voting membership and graduated membership fees. Action on this was deferred until a later meeting.

A collection was taken to cover the cost of the incorporation fee. A total of \$13.00 was collected from the group.

It was proposed and approved that Mike Bodkin act as initial incorporator for the Friends.

Additional discussion about the purpose of the Friends took place. It was felt that the purposes stated in the articles of incorporation should be broad enough to allow the group to participate in a broad range of activities, including physical development in the park.

The agenda for the next meeting was discussed. It was decided that bylaws and the setting of goals for the group would take up most of the meeting. The board was asked to be prepared to discuss possible goals and committee assignments for that meeting. Dick Hansen was selected to lead the discussion on bylaws.

Andy LaTomme was asked to bring a copy of his park's master plan to assist in coordinating the goals of the Friends with those of State Parks. He was also asked to prepare a draft set of bylaws, based on those used by existing cooperating associations, to be mailed to board members before the next meeting.

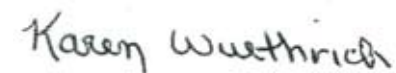
Andy LaTomme was asked to prepare a press release announcing the formation of the Friends with special mention of Mike Bodkin's contribution.

Karen Wuethrich was asked to prepare minutes of the meeting.

The date for a second meeting was set for January 13, 1987. Shirley Bridgham was asked to arrange for a meeting room at SWOCC. The suggestion was made that the board consider a fixed meeting date, e.g., the second Tuesday of each month. It was felt that this was a good idea, but no action was taken.

The meeting adjourned at 10:00 pm.

Respectfully submitted,



Karen Wuethrich

Friends of Shore Acres, Inc.

Annual Year - September 1, 1988 - August 31, 1989

September 13, 1988 - Annual Meeting - Garden House at Shore Acres



Shore Acres' Manager Andy LaTomme gets a "thanks" rose from David Bridgham

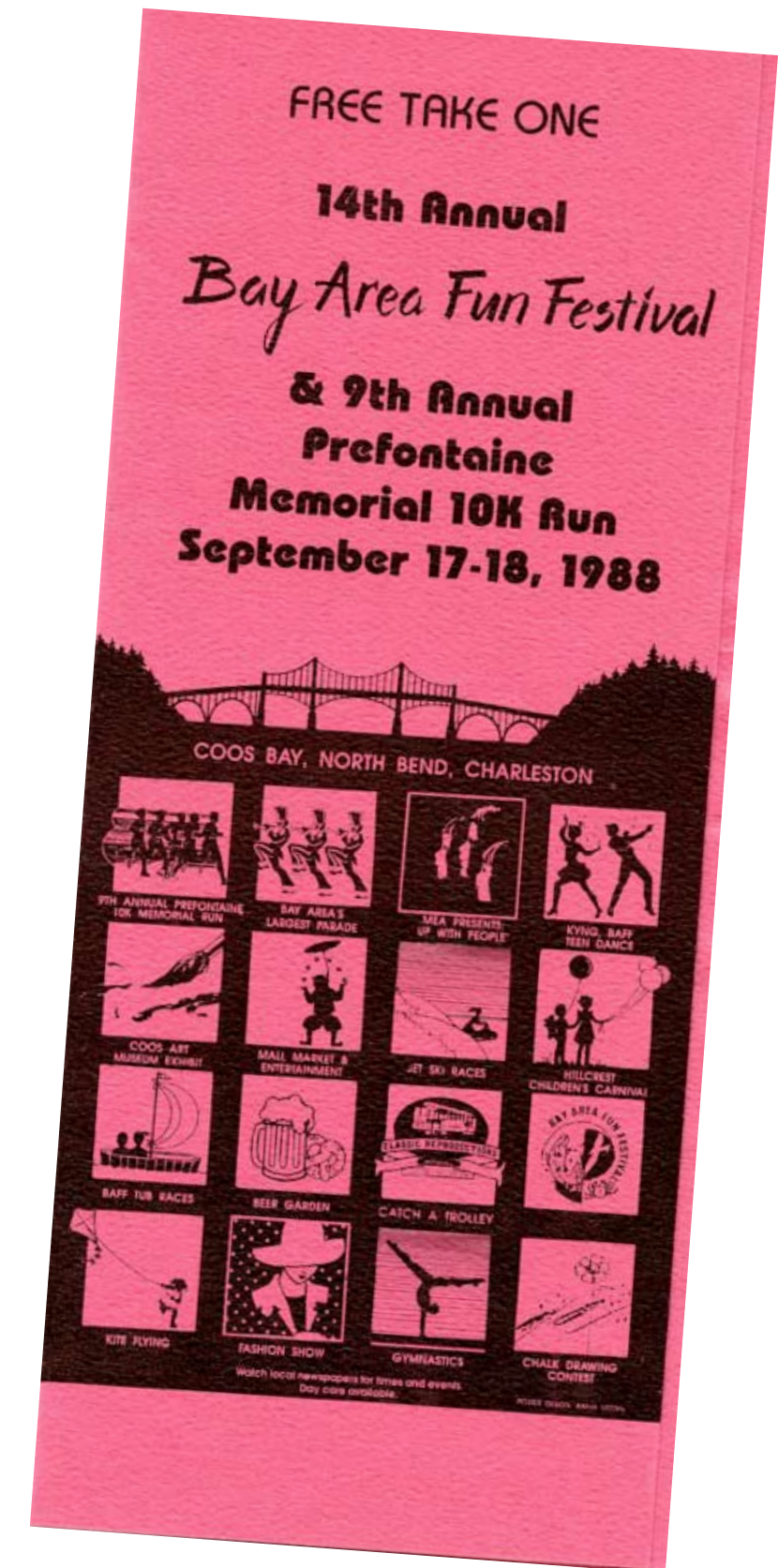


Front - Robin Harms, Don Harms, Frank Smith, Donna Smith, Debbie Webb, Dean Webb; Middle - Phyllis Love, Tony Mason, Nellie Ripper Hall, Howard Hall, Dick Van Natta, Jerrie Van Natta, Claire Kinman; Back - Ann Koppy, Dick Hansen (standing), Andy LaTomme

September Fun and Recognition



In the Bridgham's garage, David Bridgham, Donna Smith and Frank Smith created two herons/cranes for a Friends of Shore Acres' Fun Festival float. Coos Head Builders Supply and Tom Graham provided the truck. The design of the birds was used later for the metal sculptures in the Lights display. ■





Dean Webb and several kids hitched a ride on the float.

BAY AREA FUN FESTIVAL

★★★★★ PARADE

★★★★★ 2nd PLACE

Parade winners

A previous list of winners in the Bay Area Fun Festival Parade was incomplete. Here are the remainder of the winners, according to the Bay Area Chamber of Commerce.

Community and Church

First place: Baha'i Church

Second place: Shore Acres

Third place: Salmon and Trout Enhancement Program

Hobby groups

First place: Ocean Pacific Cloggers

Second place: Rainbow Cloggers

Third place: Hillah Clowns

Individual

First place: Freddy the Clown

Second place: Yappy the Clown

Third place: Old Time Fiddler

Groups and Clubs

First place: Runberg Dancers

Second place: Lincoln County Shrine Club Renegades

Third place: South Coast Dixieland Clambake

Other

First place: Coos Bay Library

Second place: Hearthside

Third place: Oregon ATV Association

October-November Challenge - Underground Wiring



David Bridgham and Ed Riley



Head Gardener George Guthrie (L) oversees inmates.



Saving the grass.



Using plans by Ed Riley and electricians from Kyle Electric, the Friends launched an ambitious project to install more than three (3) miles of underground wiring in the formal garden. It was one of the first projects that required help from the Shutter Creek Correctional crews. Ditches . . . and more ditches were dug, wire was laid, outlets installed and ditches were covered. All in time for the 2nd annual Christmas Lights at Shore Acres State Park. ■



Tom Stemmerman and Park Manager Andy LaTomme



Tom Stemmerman and Dave West



Park Ranger Gail Wolfe

More than 3 miles of wire and outlets in all flower beds



George Jones

Tom Stemmerman, Andy LaTomme and David Bridgham

George Guthrie, George Jones and Tom Kyle

Park staff, Electricians and Shutter Creek crews



The World

Serving Oregon's great South Coast for over 100 years

110th Year

Published in Coos Bay, Oregon 97420

Monday, November 21, 1988



World photo by Calandra Sterlin

Shore Acres State Park Landscape Maintenance Supervisor George Guthrie, center, is undeterred by wet weather and seems to be really getting into his work on the underground wiring project at Shore Acres

Botanical Gardens. Park employee Gail Wolfe, right, looks on as she takes a break from shovelling the heavy clay, sodden from recent rain and broken irrigation pipes. Guthrie, who says his job-title should really be "Chief Pansy-Planter, and Slug-Killer

Supreme," is working with park employees, work release personnel and community volunteers on the extensive project, which will facilitate the stringing of lights for this year's "Christmas at Shore Acres."

Christmas at Shore Acres



LIGHTS in the GARDEN and OPEN HOUSE
in the Gardener's Cottage

OPEN EVERY EVENING
5:00 - 9:00 p.m. December 10 - 30, 1988
(including Christmas Eve and Night)

antique furnishings
Christmas lights and music
refreshments

A community event coordinated by
The Friends of Shore Acres

 Original posters were
designed and produced
by Phyllis K. Love, Graphic
Artist at Southwestern
Oregon Community College.
Volunteers spent hours hand
coloring the posters. ■

Original size 11 x 17

Getting ready for the 2nd annual Christmas Lights



SWOCC Forestry Professor Bill Lemoine and his students harvested large Christmas trees donated by the Coos County Forest.



Frank Smith and David Bridgham installed a corner tree anchor.



David Bridgham, Dean Webb and Frank Smith got help from a Shutter Creek Inmate (hard hat) and Head Gardener George Guthrie (Rt) in planting a large Christmas tree.



Warner Cable provided a van and bucket.

The 2nd annual Christmas Lights at Shore Acres had even more lights, volunteers and visitors. ■



Tree was "planted" in the center walkway to the pond.



Clear miniature lights and colored C-7 lights were ready.



Decorators were ready to transform the Garden House into a lovely home for visitors to get hot cider, coffee and cookies.



Sharon Fortune (Left front) and Pearl Groves (Right front) led the cookie bakers in the first cookie bake.

Plenty of Publicity



Feathery flower of bottlebrush (Callistemon citrinus) stands out among dark leaves



Open house guests help themselves to hot cider in holiday-festive gardener's cottage



Dramatic seed heads of Gunnera chilensis stand erect at edge of lily pond, where bronze cranes and stone lantern help create Japanese effect

Winter surprises at Oregon's botanic garden on an ocean cliff

Tour a garden in December? Summer visitors to the Shore Acres State Park botanical garden, which rambles over a coastal cliff in southern Oregon, may find it hard to imagine coming in winter. But there's plenty to recommend an off-season stroll here, especially during the holidays.

You'll find a surprising number of plants still in bloom, from the 1987 All-America shrub rose 'Bonica' to the lavender-blue blossoms of hydrangea and the dark purple of hebe. Look also for lingering fuchsias and brilliant red-hot poker (*Kniphofia uvaria*). As in any well-kept winter garden, the subtle shades and textures of leaf and bark are as appealing as flowers. Many of the plants are labeled, and the

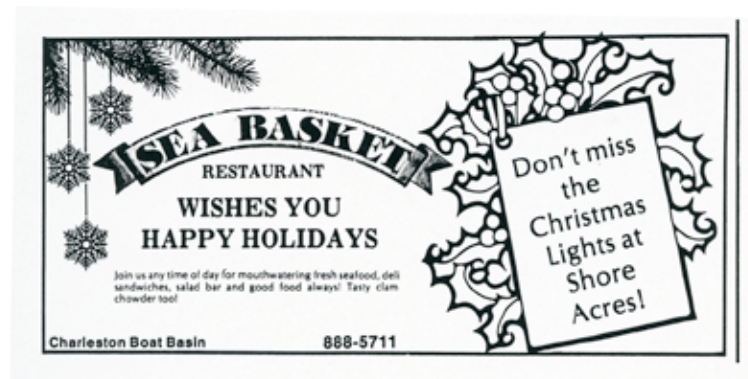
gardener is glad to share information with plant lovers.

Last December, the Friends of Shore Acres decked the park railings with cedar boughs, strung tiny white lights along hedges and in a tree, and opened the gardener's cottage for refreshments.

For this second "Christmas at Shore Acres," December 10 through December 30, the group is tripling the lighting and decorating the entire cottage with turn-of-the-century furnishings. The public is welcome between 5 and 9 any evening, even Christmas. To appreciate the gardens, go before dark. Admission is free. Shore Acres is about 10 miles southwest of Coos Bay at Cape Arago.



Waves batter sandstone cliffs below observation shelter at Shore Acres



TRAVEL

Displays will light up the season

Cities planning festivals, shows throughout state

Holiday lights will sparkle throughout Oregon as several cities plan special displays and exhibits for the season.

Albany is the site for a night-time display of thousands of white lights on historic Victorian homes. The lighted backdrop is available for family driving. Horse-drawn carriage rides, hay rides and walking tours of the Victorian residential districts are also planned. Carriage rides for two will be held every half hour from 6 p.m. to 9 p.m. on Dec. 10, 16, 17, 23 and 24. Reservations are required for the rides,

Bandon is planning a festival of white lights for the holiday season. The Festival of Lights will be held starting Friday through New Year's Day with merchants, civic groups and boat owners decorating the town. The festivities begin at 5 p.m. at the Bandon Chamber of Commerce Information Center in Old Town with carols and the lighting of the community Christmas tree. At 5:15 p.m., a fire siren will signal the lighting of the holiday displays. For more information, call the chamber of commerce at 347-9616.

Coos Bay's Shore Acres State Park will twinkle with lights starting on Saturday as the park's formal garden will be decorated and open nightly for visitors from 5 p.m. to 9 p.m. The park's garden house will be furnished with antiques and decorated for the holidays. Visitors will be treated to refreshments, and entertainment will be scheduled on most nights from 7 p.m. to 8 p.m. Four outdoor Christmas trees and three indoor trees will be on display along with the nearly 15,000 lights throughout the park. The gardens will be open through Dec. 30 including Christmas Eve and Christmas Day. For more information, call 888-7266.

NORTHWEST TRAVEL NOTES

and the cost is \$25 per couple. Caroling tours on horse-drawn hay wagons are offered from 4 p.m. to 8 p.m. Dec. 10 and 17 for a cost of \$2. Albany's local walking club has scheduled a four-mile Christmas-lights walk.

An old-fashioned Christmas parlor tour of 15 Albany homes, churches and museums is scheduled from 2 p.m. to 7 p.m. next Sunday, Dec. 11. The cost is \$6 for adults and \$4 for senior citizens and children.

For information, tickets or reservations, call the Albany Convention and Visitors Commission at (800) 526-2256.

SOUTHWESTERN OREGON COMMUNITY COLLEGE BULLETIN

December 2, 1988

PUBLISHED BY THE OFFICE OF INFORMATION SERVICES
EDITOR: BETTY OYLER

CHRISTMAS LIGHTING TO GO UP THIS WEEKEND AT SHORE ACRES

The formal gardens at Shore Acres State Park will again be lighted for Christmas, 5-9 nightly, from Dec. 10 through Dec. 30, courtesy of the Friends of Shore Acres. The last year's Christmas lighting attracted nearly 10,000 visitors from throughout the United States and several foreign countries.

This weekend, members of the Friends and volunteers from the community will string more than 15,000 lights in the gardens and around the turn-of-the-century garden house. The garden house will be furnished with antiques and decorated for Christmas. Visitors will be treated to freshly baked cookies and beverages including cranberry punch and hot, spiced cider and coffee.

Entertainment is scheduled from 7 to 8 on most evenings. New features this year include the first phase of lighting in the parking area and lighted handicapped access. Admission to the gardens is free, although donations will be accepted.

2nd annual Christmas Lights at Shore Acres - 1988

Sneak Preview Invitation

Christmas at Shore Acres



An Instant Tradition



THANK YOU

THANK YOU

THANK YOU

THANK YOU

THANK YOU

THANK YOU



WE COULDN'T DO IT WITHOUT YOU

Because you're special.... you're invited

Sneak Preview

Christmas Lights and Open House
Shore Acres Gardens



Thursday Dec. 8th 1988, 6-8 pm.



Help us test the lights and
sample our first batch of hot cider



Your Host: Friends of Shore Acres'
** Board of Directors **



Coast Life

LINDA MEIERJURGEN, Coast Life Editor

Shore Acres shows a holiday fairyland of lights!



World file photo

Tripling of dazzling lights at Shore Acres this December creates a fairyland.

The formal gardens at Shore Acres State Park turn into a fairyland of lights Saturday, Dec. 10, thanks to the lighting display and holiday hospitality offered by the Friends of Shore Acres.

Last year, the Christmas lights and festivities attracted nearly 10,000 visitors and the event has been reported in the December edition of the national magazine "Sunset."

Members of the Friends of Shore Acres and volunteers from throughout the community have installed more than 15,000 lights throughout the gardens and around the turn-of-the-century house.

The gardener's cottage was built in 1908, and the Friends have turned it into a warm and welcoming historic visit to Christmas past, with cherished antiques and homebaked holiday cookies and spiced cider, cranberry punch or hot coffee available to all visitors. Three indoor trees will showcase a variety of styles of decorations.

Last year, the entire display was "put together with extension cords, duct tape and plastic bags," according to Andy

LaTomme, park superintendent. This year, volunteers have buried 15,000 feet of electrical cable, displaying almost three times the lights, and decorating four outdoor trees.

The extensive project could not have been completed without community support, LaTomme noted, pointing especially to the International Brotherhood of

*Lights will twinkle
Dec. 10 through Dec. 30*

Electrical Workers (IBEW), Kyle Electric, and engineer Ed Riley, who designed the electrical work — all volunteers.

Entertainment is offered from 7 to 8 p.m. most nights the gardens are open.

The gardens will be lighted nightly through Dec. 30, including both Christmas eve and Christmas Day night, from 5 p.m. to 9 p.m.

New features include the first phase of lights in the parking

area, as well as lighted handicapped access from the parking area to the garden house.

The "Sunset" article points out that the gardens have much to offer during daylight this time of year, too. Aside from the walks available adjacent to the ocean and cliffs, and enclosed visitors area, the gardens offer foliage and flowers, the magazine notes.

Some plants are still in bloom, possibly the shrub rose "Bonica," a 1987 All-America rose selection, hydrangeas and purple hebe.


The magazine found a few belated fuchsias and red-hot pokers in bloom when it visited, and points to the shapes and texture contrasts of evergreens and shrubs. If you want to hunt for the article, check Page 48 in the December edition, for a full page of photos and story.

Admission to the gardens, as well as the festive lights and gardener's house is free, but donations are more than welcome.

The park is located 12 miles southwest of Coos Bay on Cape Arago Highway.

For further information, contact Shirley Bridgman at 888-7266 or 756-5401.

The World - December 5, 1988



World photo by Matt Andrus

Sailing Santa

A special guest joins sailors in the South Coast Offshore Yacht Club's annual Christmas parade on Coos Bay Saturday — adding a magical touch to the lighted ships as they sailed up the bay. Clear skies and calm waters made the parade particularly picturesque, with the brightly colored sailboats reflecting across the bay for the pleasure of shoreside spectators. Special lighting programs continue this week with the Festival of Lights in Bandon Friday and Saturday, and the opening of Christmas lighting in the gardens at Shore Acres State Park on Saturday evening.



World photos by Roger Holm

It's all lit up

Dave and Shirley Bridgham (above) check out the results of their efforts — and that of dozens of volunteers they organized — Thursday night in a trial run of Christmas lighting in the gardens at Shore Acres State Park near Charleston. The second year of lighting at the park, organized by Friends of Shore Acres, officially opens to visitors Saturday night. It's expanded from the first effort, which drew nearly 10,000 visitors to the park. A special guest at the volunteer party Thursday night was Harry Luckett (center, right photo) a caretaker of the gardens in 1946 and who lived in the 1908-vintage house that is decorated inside and out for the holidays. Luckett shared tales of working at the former estate of timber baron L.J. Simpson with Pearl Affholter (left) and his wife Sabra. More than 15,000 lights, special entertainment, and free refreshments are awaiting visitors every evening from Saturday through Dec. 30.



2nd annual Christmas Lights at Shore Acres - 1988

Christmas at Shore Acres is made possible by hundreds of volunteers and supporters

The Friends of Shore Acres coordinates this tremendous effort for the community and our visitors. This is but one example of the Friends many activities

OTHER ACTIVITIES AND PROJECTS

* RHODODENDRON SUNDAY

Mothers Day

* ROSE SUNDAY

Fathers Day

* GUIDED TOURS

Scheduled spring thru fall

* NIGHT SCAPING

Specially designed lighting to enhance the gardens year-round

WHY DOES SHORE ACRES NEED FRIENDS

State park funding has been limited to maintenance - without room to grow. The Friends can provide some of the niceties the state can't

To develop educational and interpretive services for which there are no other sources.

SUCH AS

- * Plant identification markers
- * Materials for self guided coast trail walks
- * Interpretive signs for Simson Reef and Cape Arago Lighthouse



FRIENDS OF
SHORE ACRES

©



Co-Chair David and Shirley Bridgham

Original size 8.5 x 11



Donna and Chris Flammang

BECOME A FRIEND OF SHORE ACRES

* Join Friends activities, doing things you've always wanted to do.

* Support programs and activities for our community and visitors.

* Help see night scaping at Shore Acres become a reality.

YES! I would like to become a

FRIEND OF SHORE ACRES

Senior or Student	\$5
Individual	\$10
Family	\$15
Patron	\$25
Sponsor	\$50
Benefactor	\$100
Sustaining	\$250
Life Membership	\$500
Gift	—

Fill out the information listed below and return with your check or money order to:
The Friends of Shore Acres
P.O. Box 1172
Coos Bay, OR 97420

Name _____

Address _____

Phone _____

home _____ work _____

For more information call
(503) 888-4902 or 888-3732

SHORE ACRES "TRIVIA"

* The original estate of Louis J. Simpson stretched from Cape Arago to Sunset Bay.

* The first house built by Louis Simpson, in 1906 as a Christmas gift for his wife Cassie, was located on the bluff where the present observation building is.

* Cassie Simpson died in 1920 and the mansion burned to the ground the following July, 1921.

* Eventually Simpson remarried and he and his wife Lela lived in the gardener's cottage until a second house could be built.

* The second mansion was built of salvaged lumber from the ship wreck of the schooner Brush, which ran aground on the reef near the cove.

* The Simpsons and their two daughters, Barbara and Geraldine moved into the new mansion in 1927.

* The Depression which hit the country soon after took its toll on the family's fortunes.

* In 1932 Louis and Lela deeded the Arago portion of the estate to the state of Oregon.

* In 1942 the coast road near Sunset Bay was closed. The Simpsons moved to a home in nearby Barview.

* Soon after the remainder of the Shore Acres estate was sold to the state for \$29,000.

* The Army Signal Corp. used the former estate during part of WW II.

* The second mansion, needing to much in the way of repairs and renovation, was razed by the State in December of 1948.

* Louis Simpson died in Jan. 1949.

Christmas
at
Shore Acres



An Instant Tradition



Photo by Luis Velasquez

Bay Area Activities

DECEMBER

- 1-2&4** *Dinner Theater "The Best of Times IV", a PACT presentation. Pony Village Motor Lodge, North Bend, 6:30pm.*
- 1-31** *Exhibit "Patchwork of History Quilt blocks from Jacksonville Museum", a University of Oregon Traveling Exhibit. Coos Bay Public Library, Gallery Room.*
- 1-31** *Exhibit- "Wish you Were Here", Coos Historical Museum, North Bend*
- 2-31** *Exhibit - "Religious Vision in a New Land: 19th Century in Oregon" Photographs by Barry Peril at the Coos Art Museum, Coos Bay.*
- 3** *Concert - Music Enrichment Assoc. presents the Oregon Symphony Orchestra with James DePriest, at Marshfield H.S. Auditorium, 8:15 p.m. Reserved seating \$14, General Admission \$10, call 756-0317*
- 2-21** *Theater- "Oliver" a PACT presentation, at the On Broadway Theater, Coos Bay*
- 3** **Annual Light Parade of Boats** *beginning at dusk (5.30pm) from the Coos Bay City Docks and proceeding to Charleston. Sponsored by the South Coast Off Shore Yacht Club.*
- 10-30** **Christmas Lights and Open House** *at Shoreacres State Park, sponsored by the Friends of Shoreacres. A beautiful setting in the holiday spirit. 5-9pm*
- 25** *Christmas Day We will be closed.*
- Jan. 1** **New Years Day - We will open at 9am**

For more information call 269-STAY

Pancake Mill Restaurant
2390 Tremont, North Bend, OR
756-2751



Photo by Tony Mason



Elaine Bessey directs North Bend Presbyterian Church Choir



Wonderful view from upstairs window



Runeberg Dancers



Coos Bay Methodist Church Choir

OUTLOOK



The perfect gift?

If you are still wondering what to get that favorite person on your Christmas shopping list, consider a gift to the community. Supporting the arts or active organizations puts you, the receiver and the community in the true holiday spirit...in touch with the joy of lifelong giving!

Page 3

TV listings for the week of Dec. 17-23

Give a gift of hard cash to community arts groups

Many nonprofit organizations throughout the country rise or fall on the presents of December. Be it in the form of grant, pledge, or cold (and hopefully hard) cash, the donations of December often dictate the scope and even the nature of activities for the coming year.



Art World
By
Teri Albert

Each nonprofit arts group within Coos and Curry counties justifies its existence again and again throughout the year. And each of us who offers support, either in volunteer time or through membership dues, have our favorite organizations: the group that can be counted upon to bring exceptional talent to the area; the group whose commitment to education enriches young and old alike; the group that perseveres in its journey, though staffing may flag and response be sporadic, with belief in its declared goals and trust in the future...

I urge everyone to renew their support this month in the arts organizations of our area. If a cash donation isn't possible, an offer of time will be as gratefully received and may prove the more valuable gift. If a commitment of time can't be made, write a short note expressing your appreciation of past efforts. The people who receive your thanks will gain satisfaction and energy from your gift.

Three groups whose commitment is total, and whose projects this year surpassed even their own track records, are now soliciting memberships. I applaud their efforts and recommend these organizations:

—Friends of Shore Acres. New

this year, the Friends burst onto the scene last weekend in a blaze of light when they illuminated Shore Acres State Park for the holiday season. Between 600 and 700 visitors to the gardens and garden house enjoyed the festivities, and asked questions of the volunteer hosts.

People who love Shore Acres and want to do something for it now have an outlet. Membership categories run from senior or student at \$5, to individual at \$10, family at \$15, patron at \$25, sponsor at \$50, benefactor at \$100 and sustaining at \$250. Members are invited to lead garden walks and tidepool walks; a coast trail tour featuring the geography and wildflowers is in works. The Friends have plans to supply some very nice signs for the plants, as well as develop an interpretive center where high quality posters, notecards, and books will be offered for sale.

For more information call 888-4902 or write The Friends of Shore Acres, 13030 Cape Arago Highway, Coos Bay, 97420.

—Playwrights' American Conservatory Theatre. P.A.C.T. set the pace with children's theater of the highest caliber, and followed through with strong educational programs as well as lively and provocative, comic and dramatic productions.

A theater company that refuses to stay inside the theater, they participated as instructors at Camp Sea Clef, took dinner theater across town to North Bend, participated as a joint sponsor in the popular and delightful Holiday Kaleidoscope at the Coos Art Museum, and will begin, in January, a six-week residency in Myrtle Point, working with the school system to stage a full children's theater production.

P.A.C.T.'s current offering at the On Broadway Theater is a full-bodied, traditional rendering of "A Christmas Carol." Original music by a member of the artistic staff brightens the parable, and teary-eyed audiences have provoked a continuation of the run.

Performances have been extended to include Dec. 22 and 23, with an early curtain called for 7 p.m.

Membership categories in P.A.C.T. range from basic at \$15 through angel, with discounts or free tickets offered at each of the six categories. Contributions should be directed to On Broadway Theater, 226 S. Broadway, Coos Bay, 97420.

—Music Enrichment Association. Flexibility and stamina characterize this group. They work year round to bring quality music events to the South Coast, and are looking ahead to a gala celebration this summer, in the form of a celebratory, 10th Annual Oregon Coast Music Festival.

Chamber concerts featuring local musicians and guest artists from outside the area, have moved from the SWOCC campus, most successfully, to the Coos Art Museum. Classical recitals are held onstage in the Marshfield auditorium.

Working hand in hand with other arts organizations, the MEA is a model for cooperation within the arts community, and a recognized leader. They entertained more than 800 people with the Eugene Ballet's production of "The Nutcracker" last weekend, and took short presentations (pianist and a narrator) for 10 performances to schools from Gold Beach and Ophir to northern Coos County.

An always exciting incentive to membership in the MEA is the Music Festival limited edition poster. Again this year, acclaimed marine artist Don McMichael will contribute his artistry to the MEA, in the form of the 1988 poster. Membership categories range from friend-family at \$25 through benefactor at \$1,000, with ticket, poster and party incentives at several levels. Memberships run from May 1 to May 1. First-time members joining after the summer festival have their memberships for one full year, plus the balance of the current year. Contact the MEA, P.O. Box 663, Coos Bay, 97420.

Shore Acres celebrations becoming a holiday tradition

CHARLESTON — In only its second year, the holiday celebrations at Shore Acres are on their way to becoming a local tradition. Thanks to the work of hundreds of volunteers and donors, visitors to the decorated formal gardens walk among 15,000 lights on four trees and low border hedges.

Louis Simpson built the gardens and estate. He built two mansions on the property. The first was lost to fire, and the second was destroyed by the state after the site was given to become a park.

But the style of Oregon's empire building era still can be experienced with a visit to the park. It is one of the more photographed places in the state. Ocean surf still pounds against the cliffs, the same sight that so intrigued Simpson. Contained within the gardener's house and the overlook building where the mansion stood are

pictures and the history of the estate.

The gardener's house is decorated and open for the holidays. Step inside, out of the chill salty air, and let the Friends of Shore Acres treat you to hot spiced cider or a cup of coffee. Grab a few cookies, look at the 1908-period furniture and historical displays, and leave a donation if you support the work these folks have done for their neighbors.

At 7 p.m. most evenings, entertainment will be provided. Outside the gardener's house porch, a stand had been constructed for choirs.

The program runs through Dec. 30. During the rest of the year, and especially in winter, nature provides entertainment of its own. One of the most exquisite junctions of the elements, there's always a show running at Shore Acres.



The World

Serving Oregon's great South Coast for over 100 years

No. 152 110th Year

Published in Coos Bay, Oregon 97420

Thursday, December 29, 1988

Another Coastal Attraction

Watch out for whales

By JOHN GRIFFITH
Staff Writer

CHARLESTON — Some of our largest earthly neighbors are going south for the winter. Gray whales are mammals, of course, and not fish. They weigh 30 to 40 tons apiece and grow to 45 feet long. They migrate to coves along the coast of Baja California, and last year over 18,000 people gathered on elevated headlands and promontories along the Oregon Coast to watch their passage.

"Whale Watching Spoken Here," say the signs at some of the better viewing spots. One of the best is Shore Acres State Park, west of Charleston. Volunteers are there between 10 a.m. and 1 p.m. daily through New Year's. They wear orange hard hats, and have the training to help visitors understand the phenomenon they are observing. They can help the untrained notice the plumes of spray the whales blow, and provide details about the creature's life cycle.

Some of the facts they may relate are that the mammals live part of the year in the Bering Sea, the other part off Mexico; that calves are born in Mexico, and are 15 feet long at birth; that whales feed in 300 to 400 feet of water, mostly in the Bering Sea. Some "snack" along the Oregon Coast, according to biologist Bruce Mate of the Hatfield Marine Science Center in Newport.

Gray whales eat amphipods, which are shrimp-like marine

(Continued on Page 2)



World photo by Roger Holm

A seaward view

Kyle, Kirsten and Bill Petrocine, of Ashland, watch whales and winter surf Wednesday at Shore Acres Park. The whales are now making their migration southward, to breeding grounds off Baja California. They

will return this spring, enroute to summer feeding grounds in the Bering Sea. Both migration periods draw large numbers of visitors to the Oregon Coast. Through Jan. 1, volunteers will be on hand at Shore Acres State Park to discuss whales and whale

watching, thanks to a statewide program coordinated through the Hatfield Marine Science Center in Newport. The volunteers will also be stationed at a variety of locations during the spring whale migration.



The Observation Building at Shore Acres is a site for annual whale watching in January and March. ■

Whales go south for winter

(Continued from Page 1) organisms. The whales' southern migration usually peaks one or two weeks after the New Year. Then they start back in March. Some turn around before they reach the usual Mexican destination, Mate said. Others in the early part of the northern migration may have been in Mexico for a while already. About half of the adult females will be with their newborn calves on return trip. At peak periods of the trip, as many as 30 whales may pass in an hour, he added.

According to Bunny Kadau, a Bandon resident and a whale watching volunteer, whales swim

closer to shore on their northern migration. However, if the ocean is flat, the fog's blown away and watchers are patient, they can see whales now offshore at Shore Acres. And if not, the storm watching there is a good alternative, she said.

Visitors should enter the park and drive to the viewing pavilion. Students from Myrtle Point have a display there through Saturday, Dec. 31. Another whale watching program is tentatively scheduled for the week of school's spring break, March 20. "They have a display that's just marvelous," she said.

Other good spots along the same

road are the Simpson's Reef overlook and Cape Arago Park.

Mate and others trained 130 volunteers at the science center this year. Last year, "over 18,000 people stopped and talked with our volunteers," he said. He finds the volume of public interest in whales both gratifying and important to the coast's winter economy. Combined with tourist's growing awareness of other winter diversions, such as storm watching and viewing seals, sea lions and shore birds, recent winters have seen increased revenue at many visitor-oriented businesses along the Oregon Coast.

Follow-up
January 1989

Page 4 — THE WORLD, Coos Bay, Ore., Tuesday, January 3, 1989



Opinion

JERRY BARON, Publisher
CHARLES KOCHER, Managing Editor

Page 2 — THE WORLD, Coos Bay, Ore., Monday, January 2, 1989

Lighting program 'success'

CHARLESTON — Christmas lights at Shore Acres State Park drew over 20,000 visitors in 21 nights — more than twice as many as last year.

It's a success, says Friends of Shore Acres President Shirley Bridgham, who has plans already under way for expanded lighting next December. This year's lights were on from Dec. 10 through Dec. 30.

This year's lighting, the second annual effort, included about 15,000 lights, 1,000 dozen cookies and 30 cases of cider concentrate for refreshments in the garden house, and hundreds of volunteers who provided hospitality and entertainment every night. Christmas night drew the heaviest response, with more than 1,700 people passing through the garden entrance.

The lights were doused occasionally by rain, which grounded out the new electrical installations in the garden, and people pulling light bulbs out of the strings, which put out entire strings. Bridgham said plans are being made to fight both problems in next year's lighting effort.

Rain was a particular problem, she said, since the ground fault interrupters installed with new wiring were designed for indoor, not outdoor, use. Changes will be made to keep the lights on during wet weather next year, she said.

Other plans for next year include more lights, decorations sorted by color in separate sections of the gardens, a gift shop at the entrance to the gardens, and perhaps a coordinated promotion effort with other Christmas lighting programs such as that in downtown Bandon.

"We won't expand to the pond in 1989," Bridgham said, answering a common question posed about next year's plans. That will wait until permanent garden lighting is installed, and designs for the lighting can be done professionally.

Anyone interested in helping with the effort or joining Friends of Shore Acres, a non profit organization, can write the Friends at P.O. Box 1172, Coos Bay, 97420, or call the park office at 888-4902.

Winter tourism

Lighting made an impression

THERE'S ONE LAST thought to share about the Christmas season before the 12 days of Christmas are officially over: There seemed to be more interest in outdoor lighting this year, a fact that certainly brightened the holidays.

And definitely the most popular of those efforts were the 15,000 lights in the formal gardens at Shore Acres State Park. More than 20,000 visitors enjoyed the gardens and the garden house and the refreshments and the entertainment over 21 nights.

The Friends of Shore Acres, the non-profit support group for the state park, and hundreds of volunteers pulled off the effort, including installation of a permanent outdoor wiring system, stringing 15,000 lights, decorating the garden house with appropriate antiques, serving over 12,000 cookies (including 7,000 baked by volunteers), 30 cases of hot cider and innumerable pots of hot coffee, and providing 21 nights of free entertainment, including two shows on Christmas night when nearly 2,000 visitors showed up.

The visitors came — and definitely enjoyed — the Shore Acres lights in every kind of weather under all sorts of circumstances. Many came back two and three times with different sets of friends from around the world; many came on their own from all corners of the state.

THE SUCCESS OF Shore Acres is leading the Friends to bigger and better plans for next year: more lights, better electrical connections, a gift shop, more intricate lighting designs — and more cookies. The group is being offered lots of help, but — as with many groups — can always use more.



Plans for next year may also include joint promotion efforts to bring more of those out-of-area visitors to the South Coast during the holiday season — to see the lights at Shore Acres and Bandon, to watch the winter storms pound the coast, to see the whales spout on the annual migration, to enjoy art exhibits and amateur theater, and to spend their dollars in motels, restaurants, gas stations and stores.

We think that's a great idea. We've said it before and we'll say it again, the tourist season on the South Coast doesn't have to be limited to the traditional Memorial Day-Labor Day window, or to the "good weather" season that hangs on until Halloween. There can be plenty here to attract visitors all year long, if we offer it and promote it.

"It's a year-long effort," says Friends President Shirley Bridgham of the lighting effort out at the Shore Acres gardens.

That's true of tourism, too, and none of us should forget it.

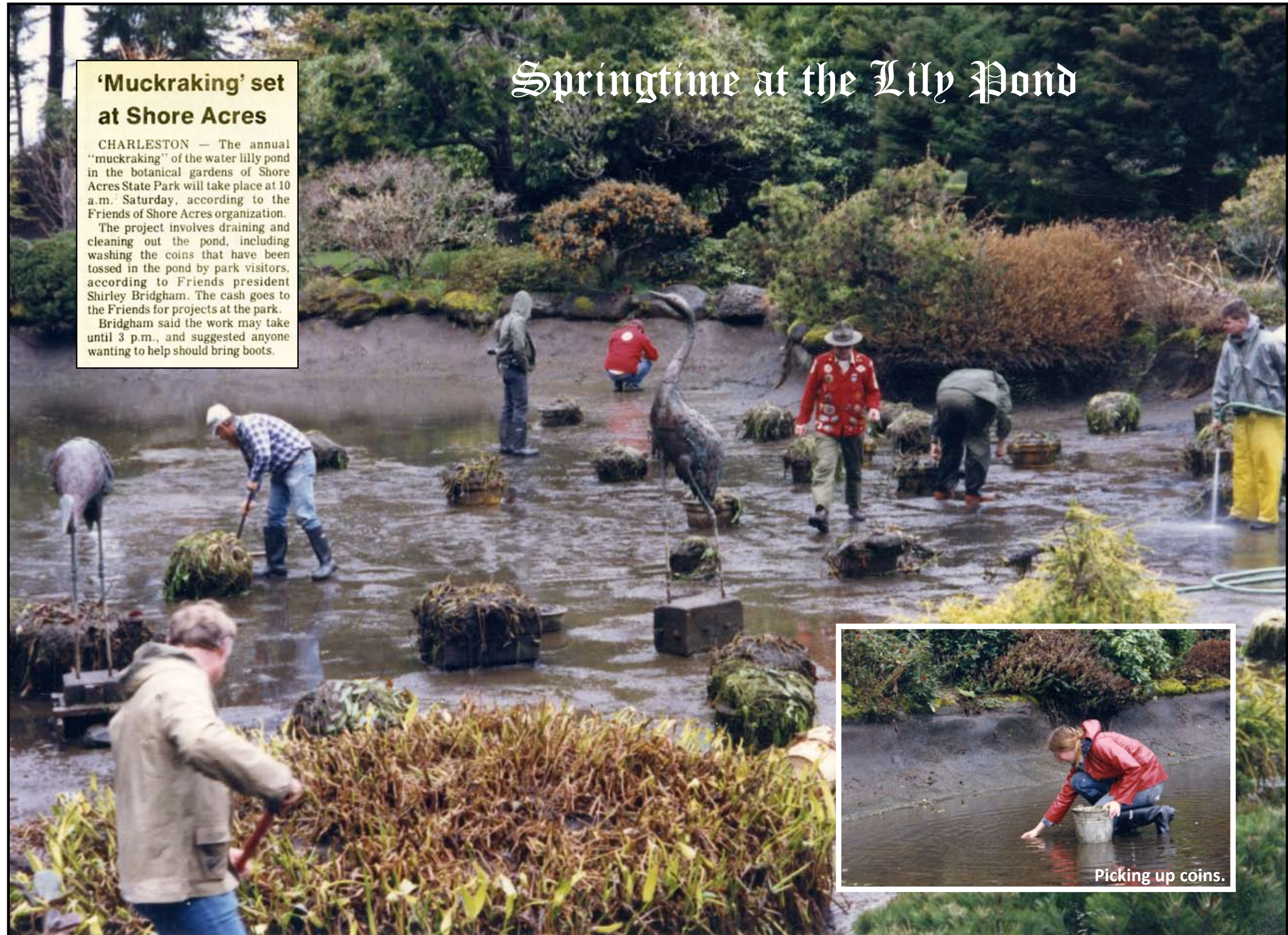
Springtime at the Lily Pond

'Muckraking' set at Shore Acres

CHARLESTON — The annual "muckraking" of the water lily pond in the botanical gardens of Shore Acres State Park will take place at 10 a.m. Saturday, according to the Friends of Shore Acres organization.

The project involves draining and cleaning out the pond, including washing the coins that have been tossed in the pond by park visitors, according to Friends president Shirley Bridgham. The cash goes to the Friends for projects at the park.

Bridgham said the work may take until 3 p.m., and suggested anyone wanting to help should bring boots.



Picking up coins.

The



World

Serving Oregon's great South Coast for over 100 years

No. 233 110th Year

Published in Coos Bay, Oregon 97420

Monday, April 3, 1989



World photo by Brad Garrison

Mucking out for spring

Threatening Saturday skies fail to dampen the spirits of the Friends Of Shore Acres' muck-raking party where volunteers — like Lori Fitzgerald of Barview — hauled out more than 40 wheelbarrows of silt, leaves, pine needles and other debris from the park's pond.

About 20 volunteers helped pick out the debris and the numerous coins tossed into the pond by visitors. David Bridgham, a Friends of Shore Acres board member, said the coins haven't been counted yet, but the amount in years past has netted around \$150 to \$200,

which is then used to support Friends of Shore Acres activities. Volunteers also trimmed the plants around the area, fertilized the pond lilies and did other gardening chores. "It looks beautiful now," Bridgham said.



Coast Life

LINDA MEIERJURGEN, Coast Life Editor

Quilts, flowers for mom!

In a special Mother's Day event, the Friends of Shore Acres will hold an open house with tea and handsewn quilts at the gardeners cottage, with a tour of the lush rhododendrons in the park available as well.

The "And Sew It Goes" quilting group will display heirloom and new quilts with traditional patterns.

The Beta Delta chapter of Epsilon Sigma Alpha, a philanthropic sorority, will be taking pictures of you and mom, or grandmother, in the gardens during the event.

Rhododendron experts will be on hand to discuss the rhodies blooming at the park right now, and answer questions about rhododendron culture.

The quilting group of about 14 quilters and friends started with a group of teachers about four years ago, and is still meeting every Tuesday night to develop their friendships as well as quilting skills.

The sorority contributes funds to many local agencies ranging from Camp Easter Seal to South Coast Hospice and the Women's Crisis Service.

Color photos of mom and family, posed on a white wicker couch in the gardens, will be taken from noon to 4 p.m. at a cost of \$4 per picture. (This is the group that takes photos with Santa each Christmas in the Bay Area.)

The Friends of Shore Acres includes volunteers who help raise funds for maintenance of the formal gardens, once part of the Louis B. Simpson estate, as well as volunteers with cleanup and garden planting, and offers summer season walking tours and workshops. The Friends sponsor the Christmas lights at the garden.



World photo by Matt A

Jean Kyle, left, and Jean Bradford display quilts in front of gardener's cottage at Shore Acres

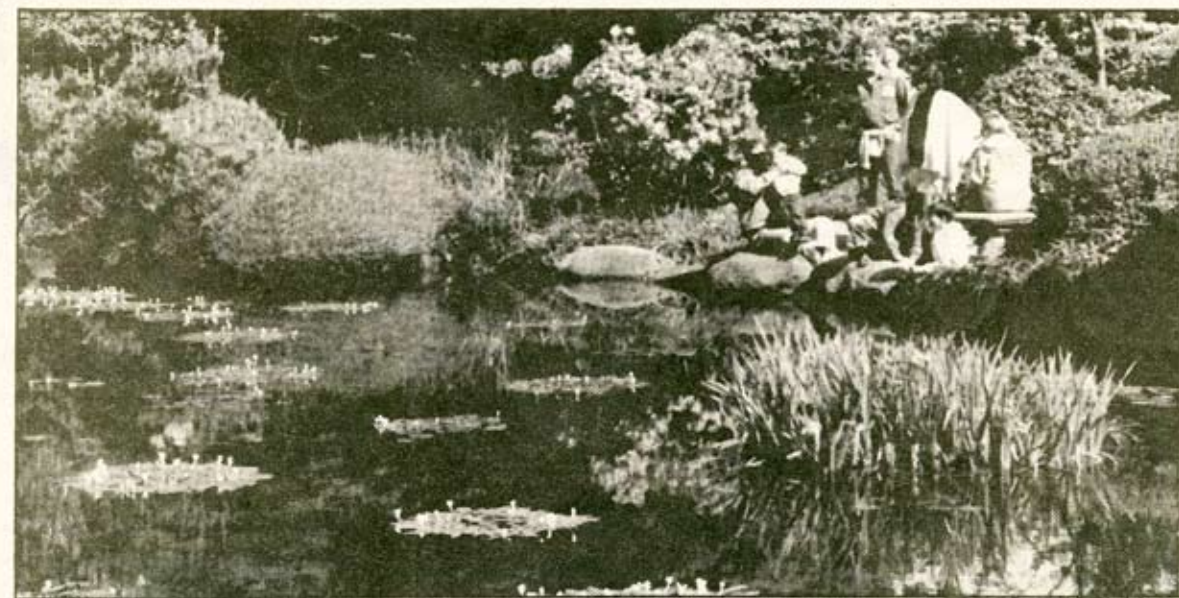


"And Sew It Goes" members Jean Bradford, Jean Kyle, Sally Sheridan, Sharlene Gould and Lucille Schneider helped set up the display in the Garden House.



David and Shirley Bridgham posed for photo in the Garden.

Rhododendron Sunday / Mother's Day - May 14, 1989



World photo by Dave Peden

Many families took advantage of the sunny weather to celebrate Mother's Day by looking at the explosion of rhododendron colors Sunday afternoon at Shore Acres

State Park's Botanical Gardens, where the Friends of Shore Acres offered a special Mother's Day tour of the rhodie bushes there.

Many visitors took a minute or two at the garden's water lily pond to gaze over the waters and listen to children throw pennies into the waters for good luck.

Shore Acres Has New Attractions Thanks to 'Friends'

By Irene Stoops

Shore Acres State Park is the seventh most visited attraction in Oregon with nearly 300,000 visitors touring last year.

Such high interest in local parks is only one reason that the Friends of Shore Acres formed in 1986.

The group helps the state parks maintain and improve eight parks in the Sunset Park District including Cape Arago, Shore Acres, Sunset Bay, William Tugman, Bolen Island, Golden and Silver Falls, Umpqua Lighthouse and Umpqua Wayside.

About 250 members in the organization donate funds for improvements, clean the pond, serve refreshments for organized events, guide tour groups, sponsor coast trail walks, put up Christmas lights, and host Rose Sunday for Father's Day



Many visited Shore Acres State Park to view the garden and quilt display on Rhododendron Sunday, one of the many activities sponsored by Friends of Shore Acres.

and Rhododendron Sunday for Mother's Day.

"The Friends give folks op-

portunity to get involved in the state parks system," according to Andy LaTomme, park manager.

Volunteers complete about 6,000 person-hours of work on the garden each year. They are currently preparing to install lights, open a gift shop, and map trails.

The sky is the limit for volunteer activities, according to George Guthrie, secretary/treasurer of the group.

Volunteers may weed the flowers or bake for special events. Those who would like to help are asked to contact at 888-3732, 888-4902 or 756-5401.

The Friends also present a slide show of the history of Shore Acres to other groups desiring to view it.

What's the purpose behind all this activity?

To provide educational and interpretative services to the public, says Dave Bridgham, Friends board member.

Interpretation will help people understand what they are seeing and provide information they can take home to remember the park and their trip by, says Mr. LaTomme.

Tourists and local residents seem to enjoy the group's work. About 10,000 people visited the park during the 1987 Christmas season and 20,000 ventured out during the 1988 season to see the lighted garden.

"I believe in the potential for what this area has to offer people. The parks are an important part of that," says Shirley Bridgham, president of the Friends.

Shore Acres has 100 different plants ranging from the rose to the fig tree.

The gift shop, near the garden entrance, will be open daily from Memorial Day to Labor Day. It will offer puzzles featuring the park, buttons, sweat-shirts, books on tidepool life and coastal items, along with garden guides and Friends of Shore Acres brochures.

"It's still fun, and as long as it's still fun we'll keep doing it," says Mrs. Bridgham.

Landscape Art on the Oregon Coast

by George Guthrie

The Coos Bay-North Bend area of Oregon's south coast may be well known for its lumber and fishing industry, but only a few miles from the busy commercial/industrial area is one of the state's "best kept secrets" for year-round beauty and serenity - Shore Acres. Once the grand



SHORE ACRES

private estate of pioneer lumber baron and shipping tycoon Louis Simpson, Shore Acres is now a state park attracting thousands of visitors annually as a masterpiece of landscape art.

While Simpson's huge cliff-ride mansion has disappeared, the natural beauty that attracted him nearly a hundred years ago still remains. The ocean still surges around the cliffs and reefs of the headland Shore Acres occupies, sometimes gently lapping in summer's calm or surging high over seventy-foot embankments to

drench winter storm watchers with the much photographed "Shore Acres Waves." As Mr. Simpson once enjoyed the view from his home, the modern visitor can look out from the Observation Building that occupies the same site and see the traffic of the open sea, from migrating grey whales to huge cargo ships bound for ports throughout the world. Nearby hiking trails lead down to sheltered coves with sandy beaches for play or tide pools and sea caves to explore.

KSOR GUIDE/JUNE 1989/13

KSOR Guide TO THE ARTS JUNE 1989 1250 Siskiyou Blvd., Ashland, OR 97520, (503) 482-6301



Bridham

To find the "heart" of Shore Acres you have to turn away from the ocean, its salt spray and wind, and go inland a few hundred yards through tall spruces and cypresses to Mr. Simpson's masterpiece - the gardens of Shore Acres. Created by the old estate's gardeners and restored by the state are five acres of trees, shrubs, and flowers that combine the formal elegance of the "English" garden with its broad, manicured lawns and colorful flower beds framed in carefully clipped windowbox hedges to the more subtle, subdued green coolness of the Oriental pond area. Years ago Simpson brought plants from all over the world for his garden, and today visitors can admire "monkey-puzzle" trees and fuchsias from South America, "red-hot poker" from South Africa and "cabbage palms" (actually a giant yucca) from New Zealand. Some of Mr. Simpson's original plants are still growing well - two huge Monterey Pines from California are probably the largest specimens of their kind in the state. Like most other gardens, summer is prime time at Shore Acres - with over 12,000 annuals (marigolds, pansies, chrysanthemums to name a few) filling the beds along with 700 rose bushes (including brand new All-American Rose Selection award winners) and dahlias of all sorts from miniature "pom-poms" to giant "dinnerplates," creating a collage



Bridham

of color and fragrance from June through September. Earliest spring starts out with crocus and accelerates through daffodils and tulips to finish with a flourish of azaleas and rhododendrons for Mother's Day.

During the Christmas season, the gardens "bloom" again in a special way. Since 1987 the "Friends of Shore Acres" (a local volunteer group) has put on "A Shore Acres Christmas," illuminating the garden with thousands of Christmas lights and filling up the original cottage with turn-of-the-century furnishings and decorations. Last year more than 20,000 visitors came to the "open house" and enjoyed what has already become an "instant tradition."

The "Friends" in cooperation with the state park staff have events planned for this summer as well, such as garden tours and interpretive exhibits on Mother's Day (for rhododendrons) and Father's Day (for roses) as well as tide pool tours at nearby Cape Arago.

Yet, regardless of the time or the event, Shore Acres with its gardens and seascapes, its combination of human design and nature's art, remains a place of beauty and interest for all seasons and all reasons.

George Guthrie, a former assistant news director for KSOR, is now landscape maintenance supervisor (head gardner) at Shore Acres State Park.

14/KSOR GUIDE/JUNE 1989

Gift and Information Center (GAIC) - June 1989



David Bridgham and John Bergen

From a Garden Cart and Garden Sitters, the Friends and Shore Acres State Park expanded to an 8' x 8' Gift and Information Center, fondly called the GAIC by volunteer manager Tony Mason and the Friends. The GAIC occupied a corner of the entrance to the formal gardens. Among other items, It featured a Shore Acres calendar, guide books, and a Milton Bradley puzzle of the gardens. The GAIC also carried a Friends' pin, T-shirts, film and more. Some items were displayed on a separate stand that was placed outside the shop when the Center was open. The official opening coincided with our activities on Rose Sunday/Father's Day. ■



Sales Good from the Beginning



Excellent Variety



Howard Hall, George Guthrie, David Bridgham, Tony Mason, Ann Koppy, Al Aslakson, Dick Hansen



Film to help visitors interpret the park

**"YOUR CONTRIBUTIONS WILL HELP
THE FRIENDS OF SHORE ACRES
PROVIDE ADDITIONAL PROGRAMS
AND INTERPRETIVE MATERIALS."**



Donations help the Friends help the Park.



Popular Guide Books and Milton Bradley Puzzle



Coast happenings

Garden week set

Thanks to Oregon law, the week of Sunday, June 4 through Saturday, June 10 is "Oregon Garden Week," with South Coast clubs taking the opportunity to encourage fellow citizens to garden.

Garden, these garden club members say, is easy to do with the state's soils and climate and it has aesthetic, economic and therapeutic values for practitioners —and those who simply enjoy looking at or strolling by gardens.

Visitors to the state often remark on the gorgeous flowers and the greenery, and acreage in iris, lillies, roses and tulips make Oregon a leading state for commercial flower production as well.

Agriculture is a major portion of the state's economy, with grass seed, vegetable products, and a newly-sprouted wildflower seed industry all contributing to the financial health of the state.

For further information on the activities or the area's garden clubs, or ways you can get involved in gardening contact Stella Lakey, district publicity chairman, 267-7384.



Photo courtesy Friends of Shore Acres

Gail Wolfe and George Guthrie, lands and maintenance supervisor at Shore Acres State Park display award for outstanding garden maintenance in 1988 from the All-America Rose Selections. The award means the garden has met high standards of rose care including planting, pruning, pest control, display and identification of roses in the display program. The All-America program involves testing and selection of outstanding new rose varieties in "test gardens" throughout the country, ranging from the Portland International Rose Test Garden to Shore Acres and other sites in Oregon.





South of the formal garden at Shore Acres State Park near Coos Bay is an Oriental garden that surrounds a lily pond containing two bronze herons.

Coastal park is well-kept secret

Formal English garden at Shore Acres surprises many visitors

By LARRY BACON
The Register-Guard

Coos Bay has a statewide image of a blue-collar town — a place of loggers, fishermen and dock workers.

It's not a place where visitors would expect to find a formal English garden just a stone's throw from the fishing village of Charleston.

Yet that beautifully landscaped garden, originally developed by lumber baron and shipping magnate Louis J. Simpson in 1906, is now the featured attraction at Shore Acres State Park.

The five acres of trees, shrubs and flowers have developed a reputation as one of the finest formal gardens in the West. Head gardener George Guthrie says Shore Acres attracts about 200,000 visitors a year and has become known as a "mini-Butchart Gardens," a smaller version of the famous gardens in Victoria, B.C.

"There are a lot of people in Oregon who don't even know we're here," Guthrie says.

The garden is only a few hundred feet from where the ocean crashes against spectacular sandstone cliffs. A barrier of tall trees protects the garden from ocean storms. To the east is a typical coastal wooded area.

Guthrie says the "combination of contrasts" with the coastal forest and rugged shoreline is what makes Shore Acres garden unique.

The formal English garden is lined with hundreds of feet of low, neatly manicured boxwood hedges laid out in precise geometrical patterns. The garden features lush green lawns, well-tended flower beds, pleasant walkways and inviting benches.

At the south end of the formal gar-

den is an Oriental garden that surrounds a 100-foot lily pond containing two bronze herons. The Oriental garden features a spreading flowering cherry tree and exotic plants from around the Pacific. It is one of the most-photographed spots in the Oregon parks system and was once the subject of a Milton-Bradley picture puzzle.

Something is in bloom at Shore Acres almost year-round. On a sunny afternoon in late May, the garden was ablaze with the bright spring colors of rhododendrons and azaleas — red, gold, white, purple, pink, salmon, yellow and shades between.

Gardeners last week were planting some of the 12,000 annual plants of marigolds, begonias and daisies that will add color. About mid-June the approximately 600 rosebushes (in 60 varieties) will begin blooming. Late July, August and September, when the roses and dahlias are both in full bloom, is probably the "showiest" time of year, Guthrie says.

Simpson's original mansion was begun in 1906 at the site of a present cliffside observation shelter. The garden was a Christmas gift for his wife, Cassie. Over the years, the garden

grew as Simpson's ships brought back exotic plants from throughout the world. Many such plants took root at Shore Acres before being generally introduced to nurseries on the West Coast.

Fire destroyed the spectacular three-story Simpson home in 1921, the year after a sudden illness took Cassie's life. Simpson built a second mansion on the same site for his second wife, Lela, in 1928. However, it was never finished. His business began to turn sour and never recovered from the stock market crash of 1929.

Simpson owned about 1,600 acres stretching from Sunset Bay on the north to Cape Arago on the South. In 1932, he donated 134 acres to the state for what became Cape Arago State Park. In 1942, the Simpsons sold the remaining 637 acres to the state. It became Shore Acres and Sunset Bay state parks.

Shore Acres served as an Army headquarters during World War II. By 1943, the old mansion was in such run-down condition that it was razed. The pond in the Oriental garden was filled in, and most of the flower gardens were converted to lawn because the

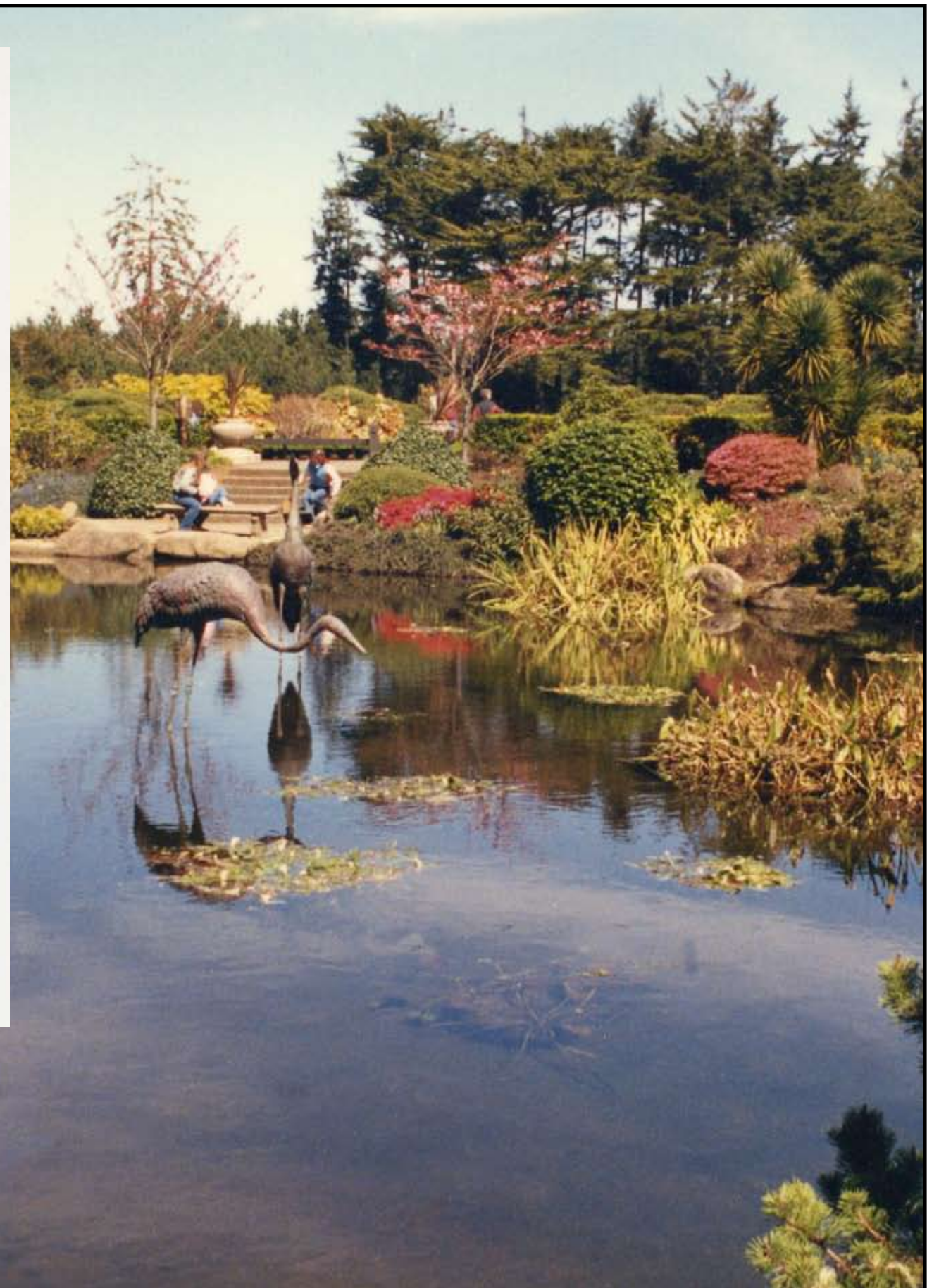
state did not have the money to tend them.

Some of the original plants survived, however, and became part of a garden restoration begun in 1971 and completed in 1975. Some of the original plantings include two 90-foot Monterey pines that are now the biggest in Oregon, and a Sitka spruce hedge once kept at eight feet high that is now a row of trees more than 60 feet high.

The only building remaining from the original Simpson estate is a gardener's house that is used for community meetings and other events, such as receptions for the many weddings that take place in the gardens.

Guthrie says Shore Acres has a solid base of community support, especially from the Friends of Shore Acres, formed in 1987. The "Friends" group provides volunteers to conduct tours and answer questions. The group is planning a new interpretive center and holds the annual "Christmas at Shore Acres" during which the garden is decorated with many lights.

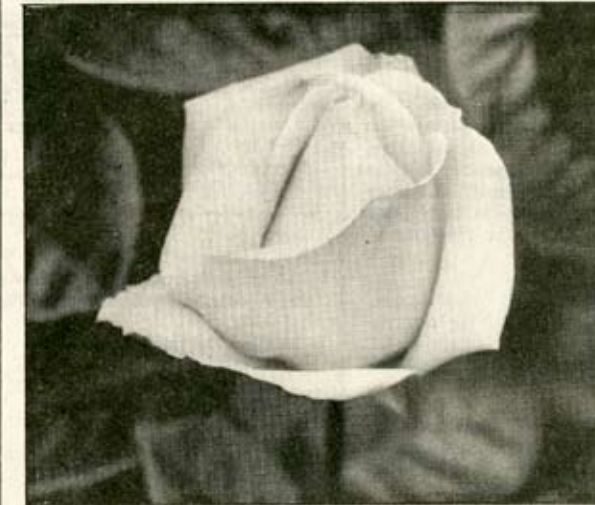
During the summer, the garden is open daily from 8 a.m. to sunset. There is a \$1 per car admission charge on weekends and holidays.





Coast Life

LINDA MEIERJURGEN, Coast Life Editor



World photos by Matt Andrus

George Guthrie, supervisor of the Shore Acres rose gardens, far left, and John Menegat, Coquille, longtime member of the Southwestern Oregon Rose Society, say the blooms are in fine shape for Father's Day weekend events, ranging from the chapter's annual show at Pony Village, to a special holiday treat for Dad, sponsored by the Friends of Shore Acres at the gardens.

Give dad a rosy Father's Day weekend!

You can give dad a rosy Father's Day weekend, with the finest of the South Coast's roses on display at Pony Village in a judged show, and fresh in the garden for special events at Shore Acres State Park.

The Southwestern Oregon Rose Society will sponsor its annual judged rose show at Pony Village Mall Saturday and Sunday, June 17 and 18. The free show offers a view of the cream of the crop, and members are on hand to answer horticultural questions, too.

At the rose test gardens at Shore Acres, the Friends of Shore Acres will offer a Sunday, Dad's Day event, similar to the Mother's Day event which drew 4,000 people to the gardens in May.

Dad can tour the garden house, viewing historic photographs of the "Mosquito Fleet" and other South Coast boats, as well as old-time waterfronts, loaned from the Victor West collection, from noon to 5 p.m., Sunday, June 18.

The photographs come from the Marshfield Sun Association museum at Front and Highway 101 in Coos Bay. The museum, housed

in the historic 1906 waterfront print shop, is the only one of its kind on the West Coast, offering tours, daily, except Sunday, from 1 to 4 p.m., of historic printing equipment, including a Washington press, used to print one of the bay's first newspapers.

In addition to photographs, the Sun Association will show dads "proofing" equipment and newly printed reproductions of the first edition of the Marshfield Sun.

In the gardens, rose experts will answer questions for fathers anxious to encourage the gorgeous blooms at home. Also in the gardens, the Beta Delta chapter of Epsilon Sigma Alpha, will offer a chance for the generations to sit down together and have their picture taken for a family keepsake. Funds raised by the organization go to support local non-profit, community service groups.

Dad and family can sip lemonade served up by the Friends of Shore Acres and also view relics off the schooner "Brush." The vessel wrecked off Simpson Reef and wood it carried was used to build the

second Simpson mansion at the park. Portions of the wrecked "Zarina," and ship's lanterns, on loan from the Coos Historical Society, will also be on display.

Those wishing to display their own roses at the rose show can attend a meeting of the society tonight, at 7:30 p.m., in the Coos Bay Library auditorium. Members will offer pointers on displaying roses. Refreshments will be served and the session is open to the public. Roses for the show should be delivered to Pony Village Mall between 7 and 10 a.m., Saturday; the show opens to the public at noon, Saturday, and remains open during mall hours for the weekend.

The rose gardens at Shore Acres recently won the 1988 certificate of outstanding maintenance from the All-America Rose Selections, Inc., a nonprofit organization of U.S. rose growers and introducers.

In the Bay Area, further information on the rose events may be obtained by calling 756-5645; in Coquille call 396-4045.

Rose Sunday / Father's Day



Gorgeous Gardens on a Sunny Day



Shirley Bridgham

Arts And Flowers



Art Objects, Fine Crafts,
Antiques, and
Beautiful Plants

Silent Auction and Sale
Ice Cream Sundaes and
Garden Tours

Saturday, June 24, 1989
11:30 am to 4:30 pm

Shore Acres State Park

Sponsored by:
Oregon Coast Music Association
and
The Friends of Shore Acres

Join Us For A Fun Afternoon
Silent Auction Concludes at 3:00 pm

Coast happenings



World photo by Brad Garrison

Toni Poole, left, and Linda Meyer display items waiting for the "Arts and Flowers" fundraiser the Oregon Coast Music Association will hold from 11:30 a.m. to 4:30 p.m., Saturday, June 24, at Shore Acres State Park botanical gardens. Funds will help support this year's Oregon Coast Music Festival which begins Friday, July 14, with a noon, brown-bag concert at the gardens by the "Swing Beans." A silent auction and sale of artworks, antiques, prints, art glass, pottery, wood carvings, quilts, and ceramic sculptures will be held. In-

door and outdoor plants will also be for sale, along with festival items including posters, t-shirts, and sweatshirts, and wine glasses to accommodate the specially-bottled Eola Hills Wine Cellars chenin blanc and cabernet blanc labeled with the Don McMichael egret gracing this year's poster. Roses in the garden are in their full glory, and volunteers will serve ice cream sundaes, coffee and punch, with musical entertainment provided, too.



Linda Meyer waits on visitor.

Arts & Flowers Displays and Visitors



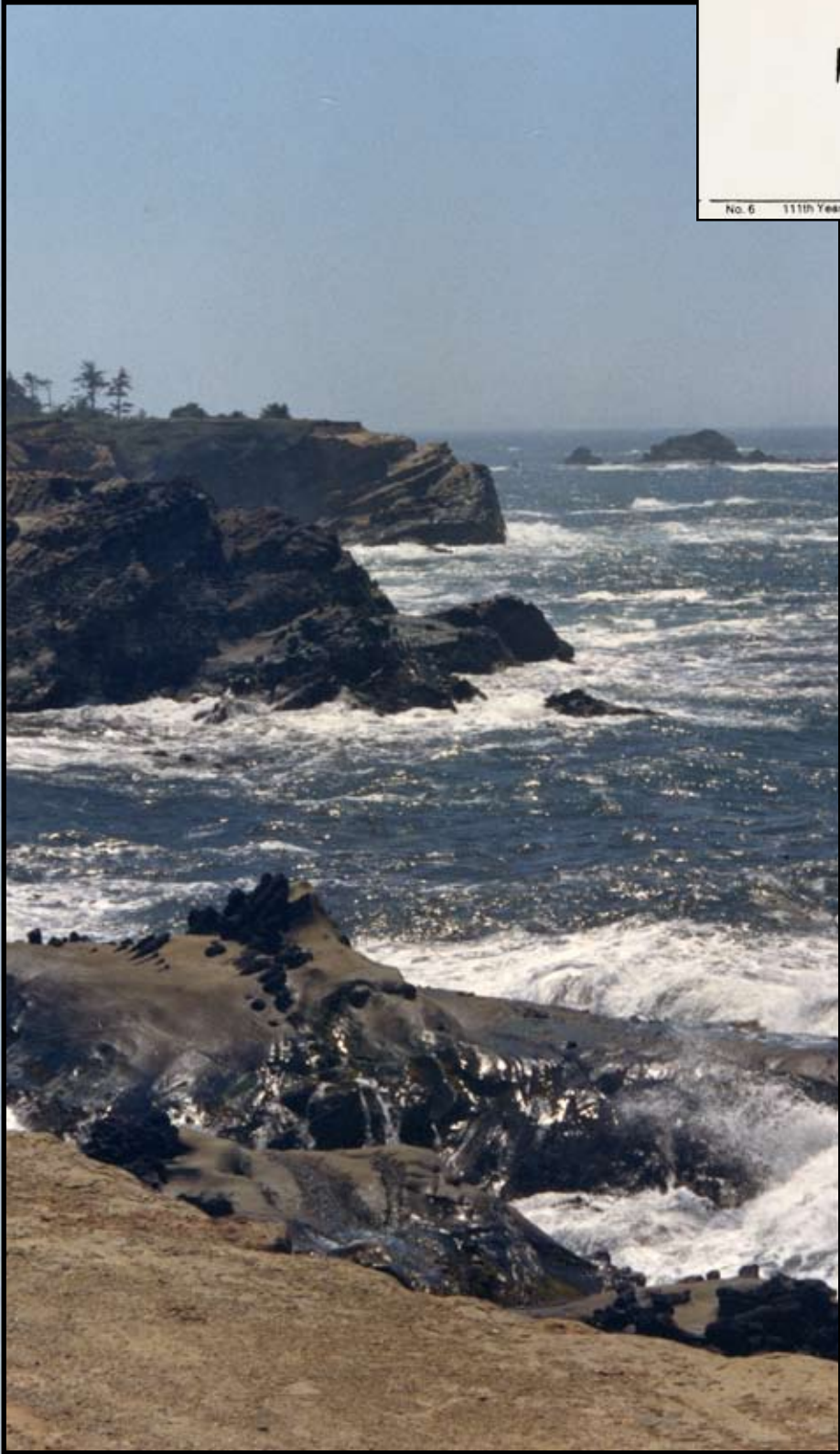
Historic Photos and Vintage Clothes



Refreshments in the Kitchen



Don McMichael (hat) talks with visitors.



The World

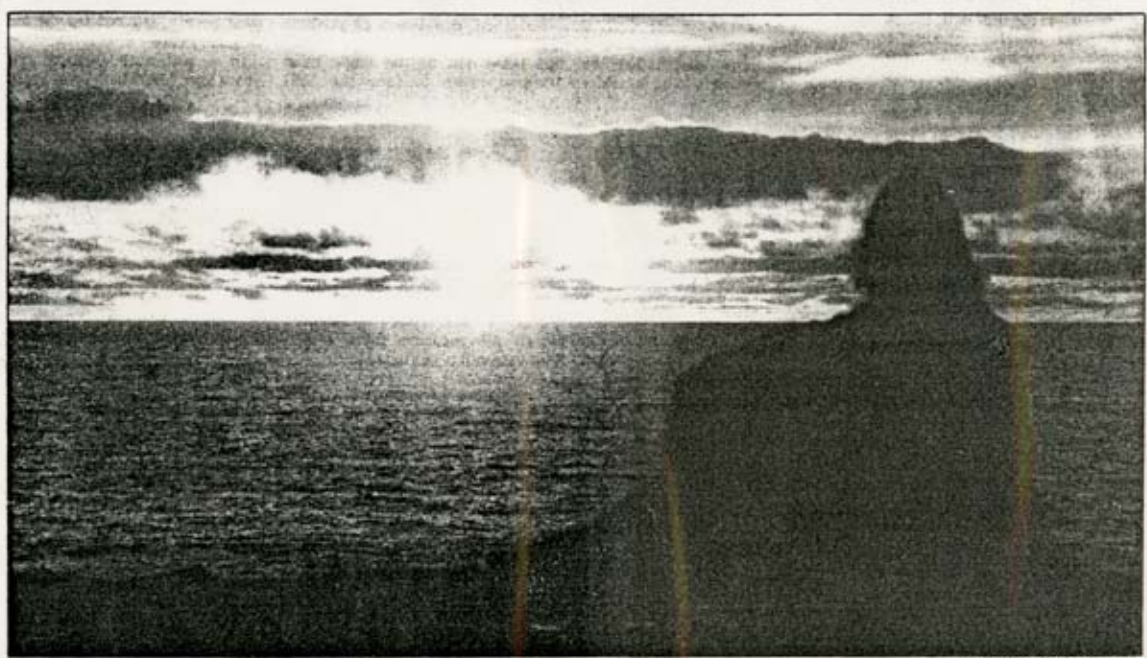
Serving Oregon's great South Coast for over 100 years

No. 6 111th Year

Published in Coos Bay, Oregon 97420

Tuesday, July 11, 1969

35 Cents



World photo by Brad Garrison

Sunsets like Monday night's, viewed here from Shore Acres State Park, have been beautiful around the Bay Area of late, and with clear skies today another stellar sunset should be in store for South Coast residents and visitors

alike. The beaches and coves along Cape Arago Highway south of Coos Bay are ideal for watching the panorama of colors and designs that are created by the setting sun and evening

clouds. Tonight the sun will set just after 9 p.m. with fog or low clouds expected to form overnight. Wednesday forecast is calling for morning clouds or fog with a chance of afternoon clearing.

Shore Acres' spectacular view gets front page coverage in *The World* newspaper. The bluff is a favorite site for wave watching, whale watching, bird watching, and just plain relaxing. In the photo on the left, you can see Shell Island in the distance. Sometimes it's the place to see more than 900 sea mammals. The Observation Building, with its interpretive displays offers shelter from wind and salty sea spray. ■



Swing Beans due at Shore Acres

The Swing Beans will perform at 12:30 p.m. on Friday, July 14 at Shore Acres State Park, adding their special brand of bluegrass swing to the beautiful garden setting. Admission is free to the outdoor concert though donations will be accepted. The ensemble will feature violin, mandolin, guitar, and bass as well as vocals, all delivered with the "Beans" warm and humoristic style.

In addition to the performance, the Friends of Shore Acres will be selling strawberry shortcake topped with fresh strawberries.

The concert is the first in the series of concerts that make up

the annual Oregon Music Festival. Beginning its second decade, this summer music event will run from July 14-29.



The next concert will take place on Saturday, July 15 at 7:30 p.m. in the National Guard Army and feature the group Bochinche, a Latin salsa band.

The World

Serving Oregon's great South Coast for over 100 years

No. 10

111th Year

Published in Coos Bay, Oregon 97420

Saturday, July 15, 1989

35 Cents



World photo by Brad Garrison

Dancin' in the park

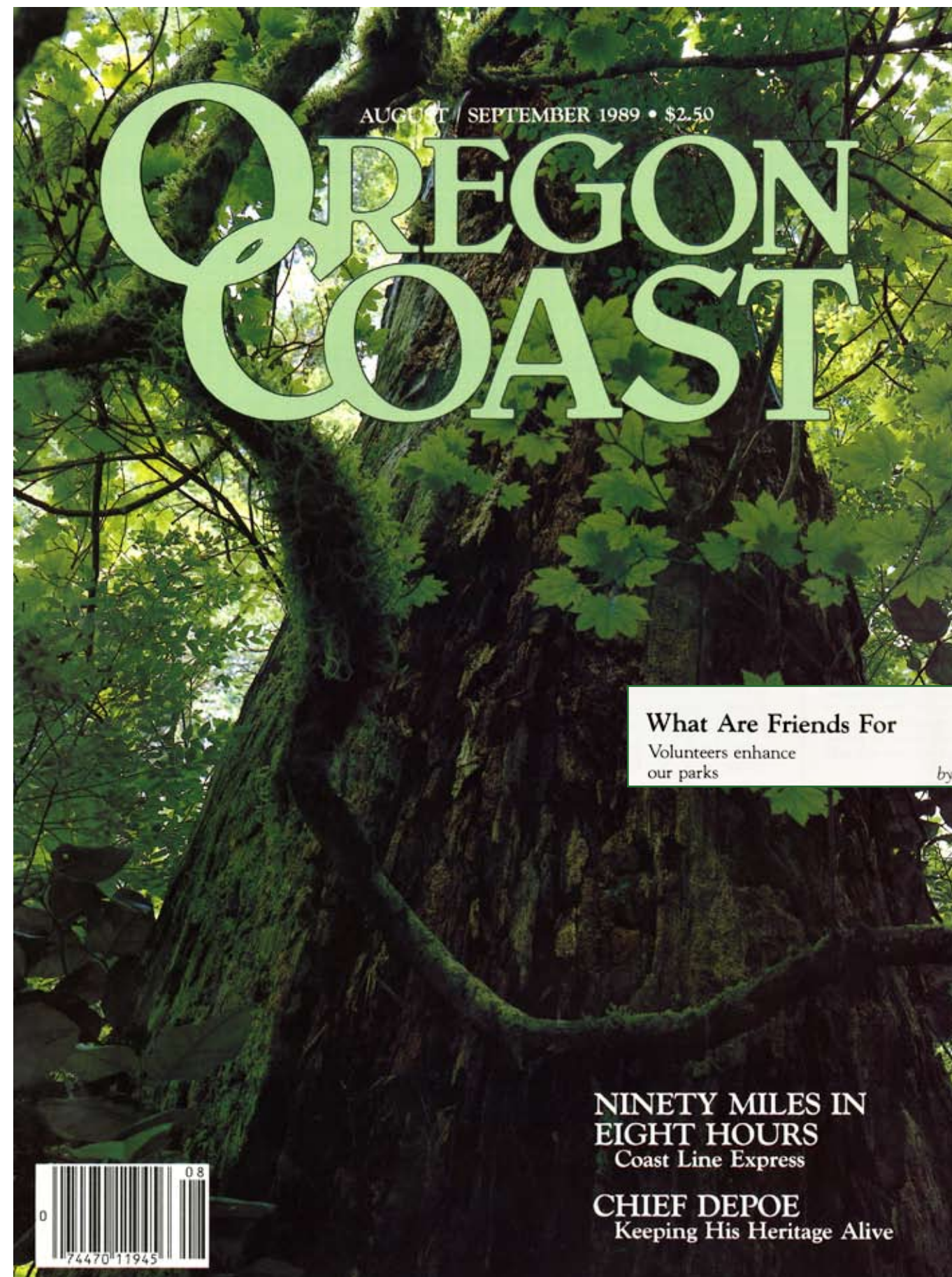
The happy dancing of sisters Debra Olson (left) and Lora Bolding, both of Cottage Grove, tells the tale: It was hard to keep your feet still Friday afternoon when the country swing music of the String Beans opened the 1989 Oregon Coast Music Festival for a crowd of about 2,000 people who turned out for the

traditional picnic concert at Shore Acres State Park. Olson and Bolding were part of a family led by Grace Olson of Cottage Grove, who came to celebrate her 50th birthday at the event and the Swing Beans added to the event with a rendition of "Happy Birthday"

just for her. The festival continues tonight with the fiery music of Bochinche, a Latin salsa band which will play for dancing and entertainment at the Coos Bay Armory. The dance-concert, complete with dance lessons for beginners, begins at 8 p.m. with tickets available at the door.



Frank Smith helps park cars on the big field while other Friends volunteers (L-R) Jerrie Van Natta, Donna Flammang and Ann Koppy sell sundaes in the garden. Another beautiful summer day and wonderful music brought many visitors to the park. ■



What Are Friends For 46
Volunteers enhance
our parks by Jan Stewart



Greenhouse at Shore Acres



Logo designed by Kevin Kohler,
Oregon State Parks

What are Friends For?

By Jan Stewart



Without monetary compensation, members of friends groups lead nature walks, give campfire talks, arrange interesting displays . . . and often are achieving what the park managers would love to, if only they had the budgets.

We Oregonians take our state parks seriously. When the quality of those parks is threatened, we react positively, not only with words, but with time, effort, and money.

Springing up across the state are "friends" groups—cooperative associations of just plain folks who are very special, indeed. When state budgets for parks were cut to allow only basic maintenance, these people formed organizations of volunteers. Now, active friends groups are providing interpretative and educational services for Oregon's recreational jewels.

Without monetary compensation, members of friends groups lead nature walks, give campfire talks, arrange interesting displays, and provide books and other educational materials. They help the park visitors understand and enjoy the natural history, scenic beauty, and historic significance of the parks and nearby communities.

Most members of friends group would be quick to say they are rewarded in many ways other than money. The personal satisfaction gained by contributing public service warms their hearts. The time spent in picturesque

Oregon Dept. of Transportation photo Volunteer John Bergen leads a Rotary Convention tour group through Shore Acres State Park's formal gardens.

settings restores peace of mind. The intellectual stimulation of such service enhances one's sense of well-being. They enjoy meeting the park visitors. In other words, they simply like to do it.

Friends groups work with the cooperation of park managers and administrators. The volunteers are involved with projects outside planned staff achievement. Park managers are included in the planning process, and very good communication exists between volunteers and employees.

Park employees are likely to devote many off-duty hours to meetings and planning. They welcome the interest and the efforts of these citizens and are learning to work with them efficiently.

Often the friends groups are achieving what the park managers would love to, if only they had the budgets. Certain improvements appear to both management and volunteers as desirable projects. If these projects fit into the category of education or interpretation,

the friends can take on the challenge. Usually, the friends' first job is to find adequate funds for the project they are interested in.

"We're learning how to work with volunteers," says State Parks Director David Talbot. Talbot attends many meetings of friends associations and he's quick to appreciate them. "These co-op members can effectively influence the course of events. One citizen is worth a dozen bureaucrats when you want to get things done in the political arena. I think these citizens will play an important role in our future."

Can there be negative factors to such associations? "There is some risk," Talbot admits. "This is another way of opening the parks up to the citizens. More people will know what we're doing and will be involved in decisions. That always complicates things."

Overall, however, Talbot expresses enthusiastic support of the friends groups. "We believe that these cooperation associations will help us survive in many ways," he says. "First, the members of these groups will provide services, sponsor events, and raise money to accomplish projects that can no longer be done with state funds. That, in itself, is wonderful."

Looking to the future, Talbot "envisions a time within the next few years when members of these associations all over the state become an informed group of state parks advocates who will help the division obtain better funding."

The first friends group formed in 1970 to save 641 acres of paths used by southwest Portland-area residents when development threatened. Since those acres fell within the boundaries of two counties as well as two cities, it was a formidable task. Today, the Friends of Tryon Creek Park Association boasts 450 members. The park stands as a monument to what caring citizens and open-minded government officials can achieve.

Now, there are nine other Friends of the Park associations throughout Oregon, five of which are associated with Oregon Coast parks. Each group works to enhance the special attractions of its park. At Fort Stevens the friends emphasize military history; Yaquina Bay's friends group maintains a "haunted" lighthouse; the group at Shore Acres capitalizes on the park's formal English gardens; at Cape Blanco, the friends are turning a historic house into a museum; and the friends at South Sough are running a summer program that includes interpretative nature hikes, canoe trips, and more.

Other groups may be forming soon. All friends groups are organized as non-profit associations under Internal

DIRECTORY OF FRIENDS GROUPS

Currently ten of Oregon's state parks have active friends groups. Five of the groups are associated with coastal parks. Each group has found a unique aspect of its particular park and has worked hard to enhance that feature.

FRIENDS OF CAPE BLANCO
P.O. Box 1345
Port Orford, OR 97465; 332-6774

FRIENDS OF CHAMPOEG STATE PARK
8239 Champoeg Rd. N.E.
St. Paul, OR 97137; 678-1251

FRIENDS OF COLLIER STATE PARK
Rt. 2 Box 450
Chiloquin, OR 97624; 783-2471

FRIENDS OF FORT STEVENS STATE PARK
P.O. Box 138
Hammond, OR 97121; 861-2000

FRIENDS OF SHORE ACRES
c/o Sunset Bay Park District
13030 Cape Arago Hwy.
Coos Bay, OR 97420; 888-4902

FRIENDS OF SILVER FALLS STATE PARK
20024 Silver Falls Hwy.
Sublimity, OR 97385; 873-6881

FRIENDS OF SOUTH SLOUGH
Box 5446 Charleston, OR 97420;
888-5558

FRIENDS OF TRYON CREEK STATE PARK
11321 S.W. Terwilliger Blvd.
Portland, OR 97219; 643-3166

FRIENDS OF VISTA HOUSE
P.O. Box 204 Corbett, OR 97019;
695-2261

FRIENDS OF YAQUINA BAY LIGHTHOUSE
P.O. Box 1350 Newport, OR 97365;
867-7451



Revenue Service guidelines.

What drives a typical friends volunteer?

For David and Shirley Bridgman, who put in as many as 40 hours a month as volunteers at Shore Acres State Park, what makes it all worthwhile is the warm response from the community and the park staff, as well as their own satisfaction from goals accomplished. "We believe in the future of the parks," they say. "We hope to make Shore Acres and the south coast a destination point."

George and Ella Mae Moorehead of Junction City, members of the Friends of Yaquina Bay Lighthouse, give more than 80 hours a month hosting the lighthouse and gift shop and say they enjoy making history come alive for the younger generation. One of their biggest rewards is seeing that happen to people who visit the Yaquina Bay Lighthouse.

Roland Broadwell, a retired military officer and president of the Friends of Fort Stevens State Park, admits to indulging nostalgia, but he adds, "There is more to the motivation than that. I like to meet people. I particularly like to tell the Army story that is many times maligned in today's life. Honestly, there

Leo and Jackie Howell guide tourists through historical military installations used in World War II, in Fort Stevens State Park.

is also a sense of still being somebody important that I like."

Broadwell devotes as many as 60 hours a month to the Friends of Fort Stevens State Park. "If I can help one person remember some of past military history in a positive way," he says, "I feel I've done something for what was my chosen way of life and of which I'm still proud."

His words gets to the core of the feeling that motivates people to join friends groups. Small wonder friends group members get a sense of importance. Their long hours of work, the thousands of dollars of donations, and the glorious results—all achieved without tax dollars—verify that to them and others, state park projects are very important, indeed.

Without friends like these, many park projects just would not happen. □

Jan Stewart is a Salem resident and former editor who now finds happiness as a volunteer nature-love host, campground host, nature-walk guide, and charter member of Friends of Silver Falls State Park.





You're Invited

60th ANNIVERSARY
OREGON STATE PARKS
1929 — 1989

Where: SHORE ACRES STATE PARK
GARDEN HOUSE
When: WEDNESDAY, AUGUST 2
2 - 4 PM

Cake donated by: ALBERTSONS
Beverages donated by: 

Page 2 MID COAST WEEKLY August 1, 1989

Community News & Events

To the residents and businesses of the Lower Umpqua area and the surrounding communities: *On behalf of the Lower Umpqua Chamber of Commerce I want to thank you for your support and participation in making Ocean Festival 1989 the best festival since its revival in 1983. In the next couple of weeks, we are going to start planning for Ocean Festival 1990 and would like to hear from you with any suggestions you might have for making next year's event even larger and more successful by calling our toll-free number 1-800-247-2155 or 271-3495. Sincerely, Carleene Compton, President.*

ANNIVERSARY CELEBRATION AT SHORE ACRES

Shore Acres State Park will celebrate the 60th anniversary of Oregon State Parks and the creation of a new State Parks and Recreation Department on August 2 at the Garden House at Shore Acres.

The short event will begin at 2 p.m. and continue to 4 p.m. Community members are invited to attend. Parks staff, Friends of Shore Acres, and volunteers will serve cake, which was donated by Albertsons and soft drinks, provided by the local Pepsi-Cola distributor, Pepsi Cola Bottling Company, Ray Pravs.

The event is one of 16 being held statewide that same day to observe the agency's 60th year of existence.

"We consider the appointment of Samuel Boardman as the first parks engineer in early August of 1929 as the beginning for our organization," said David Talbot, State Parks administrator.

Talbot noted that Boardman's appointment was made by the Highway Commission as an outgrowth of attempts to preserve the scenic beauty along Oregon's highways.

Early years for the agency were generally devoted to land purchase and preservation

efforts, followed by development of recreational facilities after World War II.

At Shore Acres State Park, the restoration of the formal gardens became a focus in the mid-70's. Hundreds of thousands of visitors enjoy the garden's exceptional beauty each year. The Friends of Shore Acres, a non-profit cooperative formed in 1986, is dedicated to providing educational and interpretive services for Shore Acres, as well as the other parks in the Sunset Bay District, Christmas lights and open house at the gardens, guided tours, new plant I.D. markers, and a new Gift and Information Center keep Friends' members and volunteers busy.

Parks and Recreation was a branch of the Highway Division until it was established as a separate division of the Department of transportation by the 1979 Legislature. Talbot noted that the '79 legislature made another decision regarding State Parks from the gas-tax supported Highway Fund," he said.

This loss of revenue combined with recession cutbacks caused State Parks to fall far behind in acquisition, development and maintenance, he said. No new camp grounds have not been upgrades or expanded significantly, he added.

To prevent a pending crisis, a citizen committee in 1988 produced a plan to guide State Parks to the year 2010. In response to the 2010 plan, Governor Neil Goldschmidt and the 1989 Legislature created a State Parks and Recreation Department to be directed by a new seven member citizen commission beginning January 1, 1990.

The governor will sign the bill at a ceremony at the Capitol in Salem August 2.

"We believe the departmental status will give State Parks more visibility within state government and that the new commission will be able to focus on park issues and help solve the long term funding problem," Talbot said.



Dazzling dahlias blooming in the garden, 60th Anniversary Celebration in the Garden House, Park Manager Andy La Tomme visiting with Elise Hamner and friend on the front porch – altogether a great day. ■



World photo by Brad Garrison

Jerrie (foreground) and Dick Van Natta, who are members of the Friends of Shore Acres help serve cake at Shore Acres State Park during Wednesday's celebration of Oregon State Parks 60th anniversary. The gathering at the garden house in the park was one of 16 that took place statewide. In addition, Gov. Neil Goldschmidt chose the day to sign a bill that creates a new State Parks and Recreation Department to be directed by a seven-member citizen commission starting Jan. 1, 1990, separating state parks from the Transportation Department. There is hope that the departmental status will give the parks more visibility within state government and that the commission will be able to focus on park issues and help solve the long-term funding problem.

Bill creates State Parks & Recreation Department

Gov. Neil Goldschmidt signed into law a bill on August 2, creating a new State Parks and Recreation Department. The bill signing occurred at a reception celebrating the state parks system's 60th anniversary.

"For 60 years we have taken memories, laughter, knowledge, a sense of heritage, and a sense of place from Oregon's parks," said Gov. Goldschmidt. "Today, we are going to start giving back. We've been resting on our parks' legacy for too long. The wear and tear in our state parks is showing," he said.

Departmental status will increase the visibility and importance of parks and recreation in state government. The new agency will be directed by a seven-member citizen commission.

Since its creation 60 years ago, the state parks system has been a part of the state highway and transportation departments.

Parks officials said that creation of the new department could be accomplished at little cost since the agency will continue to obtain accounting, purchasing and personnel services from the Department of Transportation.

The governor said the state and its people must work to protect their

sizeable investment in parks lands and facilities.

"We now have more campers than campgrounds in state parks," he said. "Reservation parks are booked for the rest of the summer, and people line up every afternoon to get into nonreservation parks," Goldschmidt said.

Last year's attendance broke all records, and camping has jumped six per cent this May and June compared to last year.

Studies predict this trend to continue with Oregon's population increasing 26 per cent over the next 20 years and state parks use expected to rise 40 per cent, he said.

To begin preparing for the future, the legislature and governor's office increased the state parks budget by 24 per cent for the next two years.

"I believe the new department and commission will be able to respond to the changing demands for outdoor recreation and historic preservation in coming decades," the governor said.

Although the bill doesn't become effective until January 1, 1990, Goldschmidt said he has asked his staff and the parks staff to move quickly to begin the work of the new department and commission.



Friends of Shore Acres, Inc.

Continued in Album 3:

Annual Year - September 1, 1989 - August 31, 1990